

QUARTERLY STATEMENT

OF THE

Thrivent Financial for Lutherans

TO THE

Insurance Department

OF THE

STATE OF

Wisconsin

FOR THE QUARTER ENDED
MARCH 31, 2026

LIFE, ACCIDENT AND HEALTH

FRATERNAL BENEFIT SOCIETIES

2026



LIFE, ACCIDENT AND HEALTH COMPANIES/FRATERNAL BENEFIT SOCIETIES - ASSOCIATION EDITION

QUARTERLY STATEMENT

AS OF MARCH 31, 2026

OF THE CONDITION AND AFFAIRS OF THE

Thrivent Financial for Lutherans

NAIC Group Code 0000 0000 NAIC Company Code 56014 Employer's ID Number 39-0123480

Organized under the Laws of Wisconsin, State of Domicile or Port of Entry WI

Country of Domicile United States of America

Licensed as business type: Life, Accident and Health [] Fraternal Benefit Societies [X]

Incorporated/Organized 11/24/1902 Commenced Business 08/15/1902

Statutory Home Office 4321 North Ballard Road Appleton, WI, US 54919-0001

Main Administrative Office 600 Portland Avenue S Minneapolis, MN, US 55415-4402 800-847-4836

Mail Address 600 Portland Avenue S Minneapolis, MN, US 55415-4402

Primary Location of Books and Records 600 Portland Avenue S Minneapolis, MN, US 55415-4402 800-847-4836

Internet Website Address www.thrivent.com

Statutory Statement Contact Joseph Edward Barnes 612-844-4243 Joe.Barnes@Thrivent.com

OFFICERS

Chief Executive Officer & President Teresa Joy Rasmussen Chief Financial & Investment Officer David Scott Royal General Counsel & Secretary Paul Roberts Johnston Actuary Rhonda Kay Ahrens

OTHER

DIRECTORS OR TRUSTEES

Deborah Marie Ackerman N. Cornell Boggs III Kenneth Arnold Carow Lynn Yvette Crump-Caine Bradford Neal Creswell Eric John Draut Jill Bernadette Louis Kathryn Vanstrom Marinello Brian Joseph McGrane Nicole Baker Pechet Teresa Joy Rasmussen John Charles Rademacher # Angela Sue Rieger

State of Minnesota County of Hennepin SS

The officers of this reporting entity being duly sworn, each depose and say that they are the described officers of said reporting entity, and that on the reporting period stated above, all of the herein described assets were the absolute property of the said reporting entity, free and clear from any liens or claims thereon, except as herein stated, and that this statement, together with related exhibits, schedules and explanations therein contained, annexed or referred to, is a full and true statement of all the assets and liabilities and of the condition and affairs of the said reporting entity as of the reporting period stated above, and of its income and deductions therefrom for the period ended, and have been completed in accordance with the NAIC Annual Statement Instructions and Accounting Practices and Procedures manual except to the extent that: (1) state law may differ; or, (2) that state rules or regulations require differences in reporting not related to accounting practices and procedures, according to the best of their information, knowledge and belief, respectively. Furthermore, the scope of this attestation by the described officers also includes the related corresponding electronic filing with the NAIC, when required, that is an exact copy (except for formatting differences due to electronic filing) of the enclosed statement. The electronic filing may be requested by various regulators in lieu of or in addition to the enclosed statement.

Teresa Joy Rasmussen Chief Executive Officer & President

Paul Roberts Johnston General Counsel & Secretary

David Scott Royal Chief Financial & Investment Officer

Subscribed and sworn to before me this day of

- a. Is this an original filing? Yes [X] No [] b. If no, 1. State the amendment number..... 2. Date filed 3. Number of pages attached.....

STATEMENT AS OF MARCH 31, 2026 OF THE Thrivent Financial for Lutherans

ASSETS

	Current Statement Date			4 December 31 Prior Year Net Admitted Assets
	1 Assets	2 Nonadmitted Assets	3 Net Admitted Assets (Cols. 1 - 2)	
1. Bonds	55,919,811,536		55,919,811,536	54,998,678,859
2. Stocks:				
2.1 Preferred stocks	541,705,464		541,705,464	515,600,525
2.2 Common stocks	1,791,953,816		1,791,953,816	1,714,036,013
3. Mortgage loans on real estate:				
3.1 First liens	11,103,459,299		11,103,459,299	10,959,739,567
3.2 Other than first liens.....				
4. Real estate:				
4.1 Properties occupied by the company (less \$ encumbrances)	18,216,650		18,216,650	18,878,359
4.2 Properties held for the production of income (less \$ encumbrances)				
4.3 Properties held for sale (less \$ encumbrances)				
5. Cash (\$(45,281,408)), cash equivalents (\$ 1,522,200,324) and short-term investments (\$385,763,131)	1,862,682,047		1,862,682,047	1,859,725,092
6. Contract loans (including \$ premium notes)	1,081,357,536	948,614	1,080,408,922	1,085,286,561
7. Derivatives	673,724,864		673,724,864	742,022,702
8. Other invested assets	10,540,516,106	40,263,185	10,500,252,921	10,415,206,133
9. Receivables for securities	228,012,221		228,012,221	111,260,194
10. Securities lending reinvested collateral assets				
11. Aggregate write-ins for invested assets				280,000,000
12. Subtotals, cash and invested assets (Lines 1 to 11)	83,761,439,539	41,211,799	83,720,227,740	82,700,434,005
13. Title plants less \$ charged off (for Title insurers only)				
14. Investment income due and accrued	598,972,526		598,972,526	606,248,832
15. Premiums and considerations:				
15.1 Uncollected premiums and agents' balances in the course of collection	7,554,019		7,554,019	8,211,901
15.2 Deferred premiums, agents' balances and installments booked but deferred and not yet due (including \$ earned but unbilled premiums)	118,667,320		118,667,320	120,765,610
15.3 Accrued retrospective premiums (\$) and contracts subject to redetermination (\$)				
16. Reinsurance:				
16.1 Amounts recoverable from reinsurers	11,841,256		11,841,256	16,946,803
16.2 Funds held by or deposited with reinsured companies				
16.3 Other amounts receivable under reinsurance contracts				
17. Amounts receivable relating to uninsured plans				
18.1 Current federal and foreign income tax recoverable and interest thereon				
18.2 Net deferred tax asset				
19. Guaranty funds receivable or on deposit				
20. Electronic data processing equipment and software	23,102,923	12,555,542	10,547,381	10,461,782
21. Furniture and equipment, including health care delivery assets (\$)	36,347,400	36,347,400		
22. Net adjustment in assets and liabilities due to foreign exchange rates				
23. Receivables from parent, subsidiaries and affiliates	19,395,497		19,395,497	14,543,274
24. Health care (\$) and other amounts receivable	2,917,841	2,917,841		
25. Aggregate write-ins for other than invested assets	388,048,508	384,956,302	3,092,206	4,394,282
26. Total assets excluding Separate Accounts, Segregated Accounts and Protected Cell Accounts (Lines 12 to 25)	84,968,286,829	477,988,884	84,490,297,945	83,482,006,489
27. From Separate Accounts, Segregated Accounts and Protected Cell Accounts	37,374,712,577		37,374,712,577	38,996,966,040
28. Total (Lines 26 and 27)	122,342,999,406	477,988,884	121,865,010,522	122,478,972,529
DETAILS OF WRITE-INS				
1101. Secured receivable on other invested asset				280,000,000
1102.				
1103.				
1198. Summary of remaining write-ins for Line 11 from overflow page				
1199. Totals (Lines 1101 through 1103 plus 1198)(Line 11 above)				280,000,000
2501. Prepaid expenses	70,937,009	70,937,009		
2502. Overfunded pension liability	306,240,096	306,240,096		
2503. Miscellaneous accounts receivable	7,882,899	4,790,693	3,092,206	4,394,282
2598. Summary of remaining write-ins for Line 25 from overflow page	2,988,504	2,988,504		
2599. Totals (Lines 2501 through 2503 plus 2598)(Line 25 above)	388,048,508	384,956,302	3,092,206	4,394,282

STATEMENT AS OF MARCH 31, 2026 OF THE Thrivent Financial for Lutherans

LIABILITIES, SURPLUS AND OTHER FUNDS

	1 Current Statement Date	2 December 31 Prior Year
1. Aggregate reserve for life contracts \$ 51,275,390,865 less \$ included in Line 6.3 (including \$ Modco Reserve)	51,275,390,865	50,942,755,323
2. Aggregate reserve for accident and health contracts (including \$ Modco Reserve)	6,854,264,764	6,844,805,988
3. Liability for deposit-type contracts (including \$ Modco Reserve).....	5,340,552,457	5,273,242,807
4. Contract claims:		
4.1 Life	522,199,698	480,974,697
4.2 Accident and health	44,235,897	43,168,489
5. Policyholders' dividends/refunds to members \$ 29,184 and coupons \$ due and unpaid	29,184	32,068
6. Provision for policyholders' dividends, refunds to members and coupons payable in following calendar year - estimated amounts:		
6.1 Policyholders' dividends and refunds to members apportioned for payment (including \$ Modco)	435,365,692	443,315,743
6.2 Policyholders' dividends and refunds to members not yet apportioned (including \$ Modco)		
6.3 Coupons and similar benefits (including \$ Modco)		
7. Amount provisionally held for deferred dividend policies not included in Line 6		
8. Premiums and annuity considerations for life and accident and health contracts received in advance less \$ discount; including \$ 6,006,680 accident and health premiums	12,822,088	10,218,792
9. Contract liabilities not included elsewhere:		
9.1 Surrender values on canceled contracts		
9.2 Provision for experience rating refunds, including the liability of \$ accident and health experience rating refunds of which \$ is for medical loss ratio rebate per the Public Health Service Act		
9.3 Other amounts payable on reinsurance, including \$ assumed and \$ ceded		
9.4 Interest Maintenance Reserve	390,845,301	346,794,343
10. Commissions to agents due or accrued-life and annuity contracts \$ 8,215,065 , accident and health \$ 461,184 and deposit-type contract funds \$ 46,540	8,722,789	16,596,060
11. Commissions and expense allowances payable on reinsurance assumed		
12. General expenses due or accrued	149,313,699	128,124,161
13. Transfers to Separate Accounts due or accrued (net) (including \$ (645,858,749) accrued for expense allowances recognized in reserves, net of reinsured allowances)	(756,930,672)	(729,957,004)
14. Taxes, licenses and fees due or accrued, excluding federal income taxes	13,093,899	13,248,919
15.1 Current federal and foreign income taxes, including \$ on realized capital gains (losses)	(9,113,251)	(9,113,251)
15.2 Net deferred tax liability		
16. Unearned investment income	5,049,607	5,086,630
17. Amounts withheld or retained by reporting entity as agent or trustee	17,317,455	9,293,746
18. Amounts held for agents' account, including \$ agents' credit balances		
19. Remittances and items not allocated	132,721,689	120,077,085
20. Net adjustment in assets and liabilities due to foreign exchange rates		
21. Liability for benefits for employees and agents if not included above	203,584,609	337,520,687
22. Borrowed money \$ and interest thereon \$		
23. Dividends to stockholders declared and unpaid		
24. Miscellaneous liabilities:		
24.01 Asset valuation reserve	2,936,698,505	2,891,709,261
24.02 Reinsurance in unauthorized and certified (\$) companies		
24.03 Funds held under reinsurance treaties with unauthorized and certified (\$) reinsurers		
24.04 Payable to parent, subsidiaries and affiliates	756,418	422,661
24.05 Drafts outstanding		
24.06 Liability for amounts held under uninsured plans		
24.07 Funds held under coinsurance		
24.08 Derivatives	61,967,338	128,690,296
24.09 Payable for securities	1,043,055,089	610,140,644
24.10 Payable for securities lending	715,640,027	550,499,312
24.11 Capital notes \$ and interest thereon \$		
25. Aggregate write-ins for liabilities	90,274,182	91,965,692
26. Total liabilities excluding Separate Accounts business (Lines 1 to 25)	69,487,857,329	68,549,613,150
27. From Separate Accounts Statement	37,233,904,455	38,857,277,873
28. Total liabilities (Lines 26 and 27)	106,721,761,784	107,406,891,023
29. Common capital stock		
30. Preferred capital stock		
31. Aggregate write-ins for other than special surplus funds		
32. Surplus notes		
33. Gross paid in and contributed surplus		
34. Aggregate write-ins for special surplus funds	5,812,444	7,749,925
35. Unassigned funds (surplus)	15,137,436,294	15,064,331,581
36. Less treasury stock, at cost:		
36.1 shares common (value included in Line 29 \$)		
36.2 shares preferred (value included in Line 30 \$)		
37. Surplus (Total Lines 31+32+33+34+35-36) (including \$ 140,808,113 in Separate Accounts Statement)	15,143,248,738	15,072,081,506
38. Totals of Lines 29, 30 and 37	15,143,248,738	15,072,081,506
39. Totals of Lines 28 and 38 (Page 2, Line 28, Col. 3)	121,865,010,522	122,478,972,529
DETAILS OF WRITE-INS		
2501. Postretirement benefit liability	69,298,433	69,801,973
2502. Other liabilities	20,975,749	22,163,719
2503.		
2598. Summary of remaining write-ins for Line 25 from overflow page		
2599. Totals (Lines 2501 through 2503 plus 2598)(Line 25 above)	90,274,182	91,965,692
3101.		
3102.		
3103.		
3198. Summary of remaining write-ins for Line 31 from overflow page		
3199. Totals (Lines 3101 through 3103 plus 3198)(Line 31 above)		
3401. Deferred gain on Medicare Supplement reinsurance	7,749,925	15,499,850
3402. Amortization of deferred gain on Medicare Supplement reinsurance	(1,937,481)	(7,749,925)
3403.		
3498. Summary of remaining write-ins for Line 34 from overflow page		
3499. Totals (Lines 3401 through 3403 plus 3498)(Line 34 above)	5,812,444	7,749,925

STATEMENT AS OF MARCH 31, 2026 OF THE Thrivent Financial for Lutherans

SUMMARY OF OPERATIONS

	1 Current Year To Date	2 Prior Year To Date	3 Prior Year Ended December 31
1. Premiums and annuity considerations for life and accident and health contracts	1,254,064,375	1,375,073,517	5,630,478,139
2. Considerations for supplementary contracts with life contingencies	32,511,204	55,046,637	192,598,945
3. Net investment income	909,692,648	959,803,729	3,821,536,160
4. Amortization of Interest Maintenance Reserve (IMR)	15,043,239	12,448,736	55,340,898
5. Separate Accounts net gain from operations excluding unrealized gains or losses			
6. Commissions and expense allowances on reinsurance ceded	6,842,479	7,563,957	30,867,696
7. Reserve adjustments on reinsurance ceded			
8. Miscellaneous Income:			
8.1 Income from fees associated with investment management, administration and contract guarantees from Separate Accounts	201,327,957	188,812,664	778,583,103
8.2 Charges and fees for deposit-type contracts			
8.3 Aggregate write-ins for miscellaneous income	3,883,539	7,952,187	24,645,988
9. Totals (Lines 1 to 8.3)	2,423,365,441	2,606,701,427	10,534,050,929
10. Death benefits	361,362,030	373,864,474	1,335,361,934
11. Matured endowments (excluding guaranteed annual pure endowments)	2,443,076	2,644,157	12,451,921
12. Annuity benefits	433,281,505	429,182,346	1,593,070,104
13. Disability benefits and benefits under accident and health contracts	100,268,572	94,054,067	391,293,345
14. Coupons, guaranteed annual pure endowments and similar benefits			
15. Surrender benefits and withdrawals for life contracts	1,120,107,669	1,026,419,694	4,316,233,729
16. Group conversions			
17. Interest and adjustments on contract or deposit-type contract funds	54,602,175	53,861,878	208,860,444
18. Payments on supplementary contracts with life contingencies	56,215,887	57,061,202	232,219,713
19. Increase in aggregate reserves for life and accident and health contracts	356,014,536	601,891,056	2,634,330,355
20. Totals (Lines 10 to 19)	2,484,295,450	2,638,674,874	10,723,821,545
21. Commissions on premiums, annuity considerations, and deposit-type contract funds (direct business only)	82,928,470	100,970,245	382,605,720
22. Commissions and expense allowances on reinsurance assumed			
23. General insurance expenses and fraternal expenses	314,338,775	297,243,195	1,226,196,526
24. Insurance taxes, licenses and fees, excluding federal income taxes	24,006,305	22,788,868	83,813,655
25. Increase in loading on deferred and uncollected premiums	2,405,234	1,292,184	2,471,836
26. Net transfers to or (from) Separate Accounts net of reinsurance	(686,453,776)	(729,891,844)	(2,865,733,416)
27. Aggregate write-ins for deductions	(1,128,385)	4,964,766	31,728,577
28. Totals (Lines 20 to 27)	2,220,392,073	2,336,042,288	9,584,904,443
29. Net gain from operations before dividends to policyholders and federal income taxes (Line 9 minus Line 28)	202,973,368	270,659,139	949,146,486
30. Dividends to policyholders and refunds to members	106,399,737	104,320,079	443,479,537
31. Net gain from operations after dividends to policyholders, refunds to members and before federal income taxes (Line 29 minus Line 30)	96,573,631	166,339,060	505,666,949
32. Federal and foreign income taxes incurred (excluding tax on capital gains)			
33. Net gain from operations after dividends to policyholders, refunds to members and federal income taxes and before realized capital gains or (losses) (Line 31 minus Line 32)	96,573,631	166,339,060	505,666,949
34. Net realized capital gains (losses) (excluding gains (losses) transferred to the IMR) less capital gains tax of \$ (excluding taxes of \$ transferred to the IMR)	49,669,632	193,662,170	209,006,794
35. Net income (Line 33 plus Line 34)	146,243,263	360,001,230	714,673,743
CAPITAL AND SURPLUS ACCOUNT			
36. Capital and surplus, December 31, prior year	15,072,081,506	14,528,108,421	14,528,108,421
37. Net income (Line 35)	146,243,263	360,001,230	714,673,743
38. Change in net unrealized capital gains (losses) less capital gains tax of \$	(41,326,596)	(480,696,942)	(475,257,363)
39. Change in net unrealized foreign exchange capital gain (loss)	5,598,072	17,476,867	33,564,355
40. Change in net deferred income tax			
41. Change in nonadmitted assets	6,939,583	(5,225,199)	(2,362,204)
42. Change in liability for reinsurance in unauthorized and certified companies			
43. Change in reserve on account of change in valuation basis, (increase) or decrease			67,051,593
44. Change in asset valuation reserve	(44,989,244)	146,948,440	138,533,652
45. Change in treasury stock			
46. Surplus (contributed to) withdrawn from Separate Accounts during period			
47. Other changes in surplus in Separate Accounts Statement	1,119,955	5,659,389	21,471,821
48. Change in surplus notes			
49. Cumulative effect of changes in accounting principles			
50. Capital changes:			
50.1 Paid in			
50.2 Transferred from surplus (stock dividend)			
50.3 Transferred to surplus			
51. Surplus adjustment:			
51.1 Paid in			
51.2 Transferred to capital (stock dividend)			
51.3 Transferred from capital			
51.4 Change in surplus as a result of reinsurance			
52. Dividends to stockholders			
53. Aggregate write-ins for gains and losses in surplus	(2,417,801)	(2,501,671)	46,297,488
54. Net change in capital and surplus for the year (Lines 37 through 53)	71,167,232	41,662,114	543,973,085
55. Capital and surplus, as of statement date (Lines 36 + 54)	15,143,248,738	14,569,770,535	15,072,081,506
DETAILS OF WRITE-INS			
08.301. Miscellaneous income	2,082,124	2,446,834	10,866,991
08.302. Fees from third party for services provided	1,801,415	5,505,353	13,778,997
08.303.			
08.398. Summary of remaining write-ins for Line 8.3 from overflow page			
08.399. Totals (Lines 08.301 through 08.303 plus 08.398) (Line 8.3 above)	3,883,539	7,952,187	24,645,988
2701. Retirement and disability benefits	(1,109,917)	(435,381)	10,017,015
2702. Employee benefits	76,290	218,487	727,005
2703. Expenses related to services provided to third party	1,801,415	5,505,353	13,778,997
2798. Summary of remaining write-ins for Line 27 from overflow page	(1,896,173)	(323,693)	7,205,560
2799. Totals (Lines 2701 through 2703 plus 2798)(Line 27 above)	(1,128,385)	4,964,766	31,728,577
5301. Pension and other post-employment benefit liability adjustments	(480,320)	(564,190)	54,047,413
5302. Amortization of deferred gain on Medicare Supplement reinsurance	(1,937,481)	(1,937,481)	(7,749,925)
5303.			
5398. Summary of remaining write-ins for Line 53 from overflow page			
5399. Totals (Lines 5301 through 5303 plus 5398)(Line 53 above)	(2,417,801)	(2,501,671)	46,297,488

STATEMENT AS OF MARCH 31, 2026 OF THE Thrivent Financial for Lutherans

CASH FLOW

	1 Current Year To Date	2 Prior Year To Date	3 Prior Year Ended December 31
Cash from Operations			
1. Premiums collected net of reinsurance	1,289,529,813	1,433,858,024	5,817,554,764
2. Net investment income	805,466,741	802,780,728	3,137,280,956
3. Miscellaneous income	212,053,975	204,328,808	834,096,787
4. Total (Lines 1 to 3)	2,307,050,529	2,440,967,560	9,788,932,506
5. Benefit and loss related payments	2,080,882,958	1,950,918,095	8,037,754,269
6. Net transfers to Separate Accounts, Segregated Accounts and Protected Cell Accounts	(659,480,108)	(689,490,711)	(2,748,089,810)
7. Commissions, expenses paid and aggregate write-ins for deductions	415,912,532	440,323,018	1,710,411,266
8. Dividends paid to policyholders	114,352,672	110,482,944	435,919,837
9. Federal and foreign income taxes paid (recovered) net of \$ tax on capital gains (losses)			
10. Total (Lines 5 through 9)	1,951,668,054	1,812,233,346	7,435,995,562
11. Net cash from operations (Line 4 minus Line 10)	355,382,476	628,734,214	2,352,936,944
Cash from Investments			
12. Proceeds from investments sold, matured or repaid:			
12.1 Bonds	2,370,106,107	2,890,568,575	9,385,684,563
12.2 Stocks	107,746,614	91,732,456	494,951,524
12.3 Mortgage loans	210,402,722	130,180,419	932,289,182
12.4 Real estate			
12.5 Other invested assets	307,634,693	957,762,440	3,801,888,867
12.6 Net gains or (losses) on cash, cash equivalents and short-term investments	5,596,716	267,503	1,619,427
12.7 Miscellaneous proceeds	749,731,853	1,284,746,257	375,864,955
12.8 Total investment proceeds (Lines 12.1 to 12.7)	3,751,218,705	5,355,257,650	14,992,298,518
13. Cost of investments acquired (long-term only):			
13.1 Bonds	3,262,048,332	3,401,913,301	11,490,458,270
13.2 Stocks	147,450,454	178,475,439	956,020,791
13.3 Mortgage loans	354,122,453	15,820,501	1,025,469,412
13.4 Real estate			3,281,953
13.5 Other invested assets	322,804,722	376,759,121	2,192,152,372
13.6 Miscellaneous applications	117,064,635	782,286,525	820,621,331
13.7 Total investments acquired (Lines 13.1 to 13.6)	4,203,490,596	4,755,254,887	16,488,004,129
14. Net increase/(decrease) in contract loans and premium notes	(4,952,484)	(1,015,858)	11,984,273
15. Net cash from investments (Line 12.8 minus Line 13.7 and Line 14)	(447,319,408)	601,018,621	(1,507,689,884)
Cash from Financing and Miscellaneous Sources			
16. Cash provided (applied):			
16.1 Surplus notes, capital notes			
16.2 Capital and paid in surplus, less treasury stock			
16.3 Borrowed funds			
16.4 Net deposits on deposit-type contracts and other insurance liabilities	67,309,650	(87,712,870)	(293,235,134)
16.5 Dividends to stockholders			
16.6 Other cash provided (applied)	27,584,237	154,286,148	(129,399,554)
17. Net cash from financing and miscellaneous sources (Line 16.1 through Line 16.4 minus Line 16.5 plus Line 16.6)	94,893,887	66,573,278	(422,634,688)
RECONCILIATION OF CASH, CASH EQUIVALENTS AND SHORT-TERM INVESTMENTS			
18. Net change in cash, cash equivalents and short-term investments (Line 11, plus Lines 15 and 17)	2,956,955	1,296,326,113	422,612,373
19. Cash, cash equivalents and short-term investments:			
19.1 Beginning of year	1,859,725,093	1,437,112,720	1,437,112,720
19.2 End of period (Line 18 plus Line 19.1)	1,862,682,048	2,733,438,833	1,859,725,093

Note: Supplemental disclosures of cash flow information for non-cash transactions:

20.0001. Refinanced mortgage loans	14,272,414	312,359	79,494,314
20.0002. Tax free exchange and mortgage dollar roll purchases	1,456,175,230	1,419,337,037	7,732,912,744
20.0003. Tax free exchange and mortgage dollar roll sales	1,454,341,795	984,375,318	7,387,073,791
20.0004. Tax free exchanges Cash Equivalent purchases	463,140		161,517,445
20.0005. Tax free exchanges Cash Equivalent sales			161,517,445
20.0006. Non-Cash contributions to Holdings and North Meadows		1,418,321	6,282,310
20.0007. Non-cash initial public offering stock split			30,000,001
20.0008. 2025 Badger FBN, purchases		2,286,096,098	2,286,096,098
20.0009. 2025 Badger FBN, sales		2,286,096,098	2,286,096,098

EXHIBIT 1

DIRECT PREMIUMS AND DEPOSIT-TYPE CONTRACTS

	1 Current Year To Date	2 Prior Year To Date	3 Prior Year Ended December 31
1. Individual life	463,882,759	465,189,791	1,901,227,239
2. Group life			
3. Individual annuities	754,755,633	872,819,471	3,580,190,325
4. Group annuities			
5. Accident & health	93,552,120	92,725,884	371,468,078
6. Fraternal			
7. Other lines of business			
8. Subtotal (Lines 1 through 7)	1,312,190,512	1,430,735,147	5,852,885,642
9. Deposit-type contracts	955,185,428	1,044,714,250	1,169,924,238
10. Total (Lines 8 and 9)	2,267,375,940	2,475,449,397	7,022,809,880

NOTES TO FINANCIAL STATEMENTS

NOTE 1 Summary of Significant Accounting Policies and Going Concern
A. Accounting Practices

The financial statements of Thrivent Financial for Lutherans (Thrivent) are presented on the basis of accounting practices and procedures prescribed by the Office of the Commissioner of Insurance of the State of Wisconsin. The Office of the Commissioner of Insurance of the State of Wisconsin recognizes only statutory accounting practices prescribed by the State of Wisconsin for determining and reporting the financial condition and results of operations of an insurance company, for determining its solvency under the Wisconsin Insurance Law. The National Association of Insurance Commissioners' (NAIC) Statutory Accounting Practices and Procedures (SAP) manual has been adopted as a component of prescribed practices by the State of Wisconsin. The Office of the Commissioner of Insurance of the State of Wisconsin has the right to permit other specific practices that deviate from prescribed practices.

A reconciliation of Thrivent's net income and surplus between NAIC SAP and practices prescribed and permitted by the state of Wisconsin is shown below:

	SSAP #	F/S Page	F/S Line #	2026	2025
NET INCOME					
(1) State basis (Page 4, Line 35, Columns 1 & 3)	XXX	XXX	XXX	\$ 146,243,263	\$ 714,673,743
(2) State Prescribed Practices that are an increase/ (decrease) from NAIC SAP: detail row 1				\$ -	\$ -
(3) State Permitted Practices that are an increase/(decrease) from NAIC SAP: detail row 1				\$ -	\$ -
(4) NAIC SAP (1-2-3=4)	XXX	XXX	XXX	\$ 146,243,263	\$ 714,673,743
SURPLUS					
(5) State basis (Page 3, Line 38, Columns 1 & 2)	XXX	XXX	XXX	\$ 15,143,248,738	\$ 15,072,081,506
(6) State Prescribed Practices that are an increase/(decrease) from NAIC SAP: detail row 1				\$ -	\$ -
(7) State Permitted Practices that are an increase/(decrease) from NAIC SAP: detail row 1				\$ -	\$ -
(8) NAIC SAP (5-6-7=8)	XXX	XXX	XXX	\$ 15,143,248,738	\$ 15,072,081,506

B. Use of Estimates in the Preparation of the Financial Statements

The preparation of financial statements in conformity with SAP requires management to make estimates and assumptions that affect the amounts reported in the financial statements and notes to the financial statements. The more significant estimates relate to fair values of investments, reserves for life, health and annuity contracts, pension and other retirement benefit liabilities. Actual results could differ from those estimates.

NOTES TO FINANCIAL STATEMENTS

C. Accounting Policy

Traditional life premiums are recognized as income over the premium paying period of the related policies. Variable life, universal life, annuity premiums and considerations of supplemental contracts with life contingencies are recognized as revenue when received. Deposits on deposit-type contracts are entered directly as a liability when received. Health premiums are earned pro rata over the terms of the policies. Expenses incurred in connection with acquiring new insurance business, including acquisition costs such as sales commissions, are charged to operations as incurred.

The amount of dividends to be paid to policyholders is determined annually by Thrivent's Board of Directors. The aggregate amount of policyholders' dividends is related to actual interest, mortality, morbidity, and expense experience for the year and judgment as to the appropriate level of statutory surplus to be retained by Thrivent.

In addition, Thrivent uses the following accounting policies:

(1) Basis for Short-Term Investments

Cash and cash equivalents include demand deposits, highly liquid investments purchased with an original maturity of three months or less and investments in money market mutual funds. Demand deposits and highly liquid investments are carried at amortized cost while investments in money market mutual funds are carried at fair value. Short-term investments have contractual maturities of one year or less at the time of acquisition. Included in short-term investments are commercial paper and agency notes, which are carried at amortized cost.

(2) Basis for Bonds and Amortization Schedule

Bonds are generally carried at amortized cost, depending on the nature of the security and as prescribed by NAIC guidelines. Discounts or premiums on bonds are amortized over the term of the securities using the modified scientific method. Interest income is recognized when earned. Bond exchange traded funds ("ETFs") on the Securities Valuation Office ("SVO") Identified Funds list are stated using the fair value measurement method.

(3) Basis for Common Stocks

Common stocks of unaffiliated companies are stated at fair value. Common stocks of unconsolidated subsidiaries are carried at the stock's equity basis. Investments in mutual funds are carried at net asset value (NAV).

(4) Basis for Preferred Stocks

Preferred stocks are carried at market value or amortized cost depending on the preferred stock's convertible characteristics and NAIC subgroup. Issues rated not in good standing are reported at lower of amortized cost or fair market value. Redeemable preferred stocks are reported at amortized costs unless they have an NAIC designation of 4, 5, or 6 which are reported at the lower of amortized cost or fair value. Perpetual preferred stocks are reported at fair value, not to exceed the current call price for the stock.

(5) Basis for Mortgage Loans

Mortgage loans are generally carried at unpaid principal balances, less valuation adjustments. Interest income is accrued on the unpaid principal balance using the loan's contractual interest rate. There are currently no mortgage loans with a discount or premium. Interest income and amortization of premiums and discounts are recorded as a component of net investment income along with prepayment fees and mortgage loan fees.

(6) Basis for Loan-Backed Securities and Adjustment Methodology

Loan-backed and structured securities are valued and reported in accordance with the P&P Manual and stated at amortized cost using the modified scientific method. See Note 5D for more information about loan-backed securities.

(7) Accounting Policies for Investments in Subsidiaries, Controlled and Affiliated Entities

The common stock of Thrivent's wholly-owned subsidiary, Thrivent Financial Holdings Inc. (Holdings), is carried under the statutory equity method.

(8) Accounting Policies for Investments in Joint Ventures, Partnerships and Limited Liability Companies

Thrivent has ownership interests in joint ventures, partnerships and limited liability companies. Thrivent carries these interests based on the underlying audited equity of the investee as reported under U.S. generally accepted accounting principles (GAAP). Other invested assets include residual tranches, non-collateral loans, and surplus notes. Residual tranches are carried at either the lower of amortized cost or fair value. Interest income on residual tranches is recorded under the effective yield method using the Allowable Earned Yield, capped by the amount of cash distributions received. Non-collateral loans and surplus notes are carried at amortized cost.

(9) Accounting Policies for Derivatives

Derivative financial instruments that hedge specific assets or liabilities are valued and reported in a manner consistent with the hedged item. Derivatives are primarily carried at fair value. Thrivent uses a mortgage dollar roll program to enhance the yield on the mortgage-backed security ("MBS") portfolio. Mortgage dollar rolls are transactions whereby Thrivent sells an MBS to a counterparty and subsequently enters into a commitment to purchase another MBS security at a later date. Thrivent's mortgage dollar roll program generally includes a series of mortgage dollar rolls extending for more than a year. See Note 8 for more information about derivative investments.

(10) Anticipated Investment Income Used in Premium Deficiency Calculation

Thrivent anticipates investment income as a factor in the premium deficiency calculation for disability income and long-term care products, in accordance with Statement of Statutory Accounting Principles (SSAP) No. 54, Individual and Group Accident and Health Contracts.

(11) Management's Policies and Methodologies for Estimating Liabilities for Losses and Loss/Claim Adjustment Expenses

Unpaid losses and loss adjustment expenses include an amount determined from individual case estimates and loss reports and an amount, based on past experience, for losses incurred but not reported. Such liabilities are necessarily based on assumptions and estimates and while management believes the amount is adequate, the ultimate liability may be in excess of or less than the amount provided. The methods for making such estimates and for establishing the resulting liability is periodically reviewed and any adjustments are reflected in the period determined.

(12) Changes in the Capitalization Policy and Predefined Thresholds from Prior Period

Thrivent has not modified its capitalization policy from the prior period.

(13) Method Used to Estimate Pharmaceutical Rebate Receivables

Thrivent is not a participant in any pharmaceutical rebate program.

D. Going Concern

(1-4) There is no substantial doubt regarding Thrivent's ability to continue as a going concern.

NOTE 2 Accounting Changes and Corrections of Errors

In the first quarter of 2026, Thrivent adopted the new Generator of Economics Scenarios (GOES), replacing the use of the AIRG, for Variable Annuity reserves calculated under VM-21 (aka PBR reserves) effective 1/1/2026 as required by the 2027 edition of the Valuation Manual. The resulting reserve increased reserves by approximately \$9.8 million using 12/31/2025 economics and in force. Also, Thrivent has adopted VM-22 for new Fixed Annuity issues starting 1/1/2026. This does not impact Fixed Annuity reserves booked prior to 2026.

NOTE 3 Business Combinations and Goodwill

No significant changes

NOTE 4 Discontinued Operations

No significant changes

NOTES TO FINANCIAL STATEMENTS

NOTE 5 Investments
A. Mortgage Loans, including Mezzanine Real Estate Loans

No significant changes

B. Debt Restructuring

No significant changes

C. Reverse Mortgages

No significant changes

D. Asset-Backed Securities
(1) Description of Sources Used to Determine Prepayment Assumptions

Prepayment assumptions for mortgage-backed/ asset-backed securities were obtained from Bloomberg.

(2) Securities with Recognized Other-Than-Temporary Impairment

For all securities within the scope of SSAP No. 43, Asset-Backed Securities, no-other-than-temporary (OTTI) was recognized by Thrivent on the basis of either 'intent to sell' or 'ability or lack of intent to retain the investment in the security for a period of time sufficient to recover the amortized cost basis.'

(3) Recognized OTTI Securities

Thrivent recognized other-than-temporary impairments during 2026 on the following asset-backed securities where the present value of cash flows expected to be collected was less than the amortized cost basis of the security: NONE

(4) All impaired securities (fair value is less than cost or amortized cost) for which an other-than-temporary impairment has not been recognized in earnings as a realized loss (including securities with a recognized other-than-temporary impairment for non-interest related declines with a non-recognized interest related impairment remains):

As of March 31, 2026, Thrivent held asset-backed securities with a book adjusted carrying value of \$2.8 billion and a fair value of \$2.7 billion. The securities have unrealized gains of \$14 million and unrealized losses totaling \$153 million.

a) The aggregate amount of unrealized losses:

1. Less than 12 Months	\$ 4,562,609
2. 12 Months or Longer	\$ 148,061,804

b) The aggregate related fair value of securities with unrealized losses:

1. Less than 12 Months	\$ 541,501,927
2. 12 Months or Longer	\$ 1,259,561,087

(5) Information Investor Considered in Reaching Conclusion that Impairments are Not Other-Than-Temporary

All bonds in an unrealized loss position were reviewed to determine whether an other-than-temporary impairment should be recorded. Thrivent has evaluated projected cash flows and impaired those securities where cash flows expected to be collected was less than the amortized cost basis. Detailed analysis of underlying credit and cash flows are reviewed for each security. It is possible that Thrivent could recognize other-than-temporary impairments in the future on some of the securities held at March 31, 2026, as additional information regarding these securities becomes known.

E. Dollar Repurchase Agreements and/or Securities Lending Transactions
(1) Policy for Requiring Collateral or Other Security

For securities lending agreements, Thrivent follows statutory guidance for minimum collateral required on loaned securities at the outset of the contract. Cash collateral received is invested in bonds, cash equivalents and short-term investments and the offsetting collateral liability is included in payable for securities lending. The fair value of the collateral was \$725 million as of March 31, 2026. Thrivent held \$0 reverse repurchase agreements as of March 31, 2026.

(2) Disclose the Carrying Amount and Classification of Both Assets and Liabilities

Thrivent did not pledge any of its assets as collateral for security lending arrangements as of March 31, 2026.

(3) Collateral Received
a. Aggregate Amount Collateral Received

	<u>Fair Value</u>
1. Securities Lending	
(a) Open	\$ 247,843,000
(b) 30 Days or Less	\$ 342,612,676
(c) 31 to 60 Days	\$ 48,865,207
(d) 61 to 90 Days	\$ 35,000,000
(e) Greater Than 90 Days	\$ 50,941,950
(f) Subtotal (a+b+c+d+e)	\$ 725,262,833
(g) Securities Received	\$ -
(h) Total Collateral Received (f+g)	\$ 725,262,833
2. Dollar Repurchase Agreement	
(a) Open	\$ -
(b) 30 Days or Less	\$ -
(c) 31 to 60 Days	\$ -
(d) 61 to 90 Days	\$ -
(e) Greater Than 90 Days	\$ -
(f) Subtotal (a+b+c+d+e)	\$ -
(g) Securities Received	\$ -
(h) Total Collateral Received (f+g)	\$ -
b. The fair value of that collateral and of the portion of that collateral that it has sold or repledged	\$ -

c. Information about Sources and Uses of Collateral

Thrivent receives cash collateral in an amount in excess of the fair value of the securities loaned. The cash collateral is reinvested and administered by Thrivent, which invests in bonds, cash equivalents and short-term securities.

(4) Aggregate Value of the Reinvested Collateral

For securities lending transactions administered by Thrivent, the aggregate value of Thrivent's reinvested collateral that is reported in the investment schedules is \$725 million.

NOTES TO FINANCIAL STATEMENTS

- (5) Collateral Reinvestment
a. Aggregate Amount Collateral Reinvested

	Amortized Cost	Fair Value
1. Securities Lending		
(a) Open	\$ 247,843,000	\$ 247,843,000
(b) 30 Days or Less	\$ 342,610,223	\$ 342,612,676
(c) 31 to 60 Days	\$ 48,862,834	\$ 48,865,207
(d) 61 to 90 Days	\$ 35,000,000	\$ 35,000,000
(e) 91 to 120 Days	\$ 25,000,000	\$ 25,000,000
(f) 121 to 180 Days	\$ 13,941,950	\$ 13,941,950
(g) 181 to 365 Days	\$ -	\$ -
(h) 1 to 2 years	\$ 12,000,000	\$ 12,000,000
(i) 2 to 3 years	\$ -	\$ -
(j) Greater than 3 years	\$ -	\$ -
(k) Subtotal (Sum of a through j)	\$ 725,258,007	\$ 725,262,833
(l) Securities Received	\$ -	\$ -
(m) Total Collateral Reinvested (k+l)	\$ 725,258,007	\$ 725,262,833
2. Dollar Repurchase Agreement		
(a) Open	\$ -	\$ -
(b) 30 Days or Less	\$ -	\$ -
(c) 31 to 60 Days	\$ -	\$ -
(d) 61 to 90 Days	\$ -	\$ -
(e) 91 to 120 Days	\$ -	\$ -
(f) 121 to 180 Days	\$ -	\$ -
(g) 181 to 365 Days	\$ -	\$ -
(h) 1 to 2 years	\$ -	\$ -
(i) 2 to 3 years	\$ -	\$ -
(j) Greater than 3 years	\$ -	\$ -
(k) Subtotal (Sum of a through j)	\$ -	\$ -
(l) Securities Received	\$ -	\$ -
(m) Total Collateral Reinvested (k+l)	\$ -	\$ -

- b. Explanation of Additional Sources of Liquidity for Maturity Date Mismatches
The maturity dates of the liabilities generally match the maturity dates of the invested assets.

- (6) Detail on Collateral Transactions Not Permitted by Contract or Custom to Sell or Repledge
Thrivent has not accepted collateral that it is not permitted to sell or repledge.

- (7) Collateral for securities lending transactions that extend beyond one year from the reporting date.

Description of Collateral	Amount
Bonds - Issuer Credit Obligations	\$ 12,000,000
Total Collateral Extending beyond one year of the reporting date	\$ 12,000,000

- F. Repurchase Agreements Transactions Accounted for as Secured Borrowing

Thrivent has no repurchase agreements transactions accounted for as secured borrowing as of March 31, 2026.

- G. Reverse Repurchase Agreements Transactions Accounted for as Secured Borrowing

- (1) Thrivent has a tri-party reverse repurchase agreement (repo) to purchase and resell short-term securities. The securities are classified as a NAIC 1 designation and the maturity of the securities is three months to one year with a carrying value and fair value of \$0 as of March 31, 2026. Thrivent is not permitted to sell or repledge these securities. The purchased securities are included in cash, cash equivalents and short-term investments in the accompany Statutory-Basis Statements of Assets, Liabilities and Surplus. Thrivent received cash as collateral, having a fair value at least equal to 102% of the purchase price paid for the securities and Thrivent's designated custodian takes possession of the collateral. The collateral is not recorded in Thrivent's financial statements.

REPURCHASE TRANSACTION – CASH PROVIDER – OVERVIEW OF SECURED BORROWING TRANSACTIONS

- (2) Type of Repo Trades Used

- a. Bilateral (YES/NO)
b. Tri-Party (YES/NO)

	FIRST QUARTER	SECOND QUARTER	THIRD QUARTER	FOURTH QUARTER
a. Bilateral (YES/NO)	No			
b. Tri-Party (YES/NO)	No			

- (3) Original (Flow) & Residual Maturity

- a. Maximum Amount
1. Open – No Maturity
 2. Overnight
 3. 2 Days to 1 Week
 4. > 1 Week to 1 Month
 5. > 1 Month to 3 Months
 6. > 3 Months to 1 Year
 7. > 1 Year
- b. Ending Balance
1. Open – No Maturity
 2. Overnight
 3. 2 Days to 1 Week
 4. > 1 Week to 1 Month
 5. > 1 Month to 3 Months
 6. > 3 Months to 1 Year
 7. > 1 Year

	FIRST QUARTER	SECOND QUARTER	THIRD QUARTER	FOURTH QUARTER
1. Open – No Maturity	\$ -			
2. Overnight	\$ -			
3. 2 Days to 1 Week	\$ -			
4. > 1 Week to 1 Month	\$ -			
5. > 1 Month to 3 Months	\$ -			
6. > 3 Months to 1 Year	\$ -			
7. > 1 Year	\$ -			
1. Open – No Maturity	\$ -			
2. Overnight	\$ -			
3. 2 Days to 1 Week	\$ -			
4. > 1 Week to 1 Month	\$ -			
5. > 1 Month to 3 Months	\$ -			
6. > 3 Months to 1 Year	\$ -			
7. > 1 Year	\$ -			

- (4) Fair Value Securities Sold and/or Acquired that Resulted in Default

Thrivent did not have any securities sold or acquired that resulted in default in 2025.

NOTES TO FINANCIAL STATEMENTS

(5) Fair Value of Securities Acquired Under Repo – Secured Borrowing

	FIRST QUARTER	SECOND QUARTER	THIRD QUARTER	FOURTH QUARTER
a. Maximum Amount	\$ -			
b. Ending Balance	\$ -			

(6) Securities Acquired Under Repo – Secured Borrowing by NAIC Designation

ENDING BALANCE

	1 NONE	2 NAIC 1	3 NAIC 2	4 NAIC 3
a. ICO - FV	\$ -	\$ -	\$ -	\$ -
b. ABS - FV	\$ -	\$ -	\$ -	\$ -
c. Preferred Stock - FV	\$ -	\$ -	\$ -	\$ -
d. Common Stock	\$ -	\$ -	\$ -	\$ -
e. Mortgage Loans - FV	\$ -	\$ -	\$ -	\$ -
f. Real Estate - FV	\$ -	\$ -	\$ -	\$ -
g. Derivatives - FV	\$ -	\$ -	\$ -	\$ -
h. Other Invested Assets - FV	\$ -	\$ -	\$ -	\$ -
i. Total Assets - FV (Sum of a through h)	\$ -	\$ -	\$ -	\$ -

ENDING BALANCE

	5 NAIC 4	6 NAIC 5	7 NAIC 6	8 DOES NOT QUALIFY AS ADMITTED
a. ICO - FV	\$ -	\$ -	\$ -	\$ -
b. ABS - FV	\$ -	\$ -	\$ -	\$ -
c. Preferred Stock - FV	\$ -	\$ -	\$ -	\$ -
d. Common Stock	\$ -	\$ -	\$ -	\$ -
e. Mortgage Loans - FV	\$ -	\$ -	\$ -	\$ -
f. Real Estate - FV	\$ -	\$ -	\$ -	\$ -
g. Derivatives - FV	\$ -	\$ -	\$ -	\$ -
h. Other Invested Assets - FV	\$ -	\$ -	\$ -	\$ -
i. Total Assets - FV (Sum of a through h)	\$ -	\$ -	\$ -	\$ -

(7) Collateral Provided – Secured Borrowing

	FIRST QUARTER	SECOND QUARTER	THIRD QUARTER	FOURTH QUARTER
a. Maximum Amount				
1. Cash	\$ -			
2. Securities (FV)	\$ -			
3. Securities (BACV)	XXX	XXX	XXX	XXX
4. Nonadmitted Subset (BACV)	XXX	XXX	XXX	XXX
b. Ending Balance				
1. Cash	\$ -			
2. Securities (FV)	\$ -			
3. Securities (BACV)	\$ -			
4. Nonadmitted Subset (BACV)	\$ -			

(8) Allocation of Aggregate Collateral Pledged by Remaining Contractual Maturity

	AMORTIZED COST	FAIR VALUE
a. Overnight and Continuous	\$ -	\$ -
b. 30 Days or Less	\$ -	\$ -
c. 31 to 90 Days	\$ -	\$ -
d. > 90 Days	\$ -	\$ -

(9) Recognized Receivable for Return of Collateral – Secured Borrowing

	FIRST QUARTER	SECOND QUARTER	THIRD QUARTER	FOURTH QUARTER
a. Maximum Amount				
1. Cash	\$ -			
2. Securities (FV)	\$ -			
b. Ending Balance				
1. Cash	\$ -			
2. Securities (FV)	\$ -			

(10) Recognized Liability to Return Collateral – Secured Borrowing (Total)

	FIRST QUARTER	SECOND QUARTER	THIRD QUARTER	FOURTH QUARTER
a. Maximum Amount				
1. Repo Securities Sold/Acquired with Cash Collateral	\$ -			
2. Repo Securities Sold/Acquired with Securities Collateral (FV)	\$ -			
b. Ending Balance				
1. Repo Securities Sold/Acquired with Cash Collateral	\$ -			
2. Repo Securities Sold/Acquired with Securities Collateral (FV)	\$ -			

NOTES TO FINANCIAL STATEMENTS

- H. Repurchase Agreements Transactions Accounted for as a Sale
Thrivent has no repurchase agreements transactions accounted for as a sale as of March 31, 2026.
- I. Reverse Repurchase Agreements Transactions Accounted for as a Sale
Thrivent has no reverse repurchase agreements transactions accounted for as a sale as of March 31, 2026.
- J. Real Estate
No significant changes
- K. Investments in Tax Credit Structures (tax credit investments)
No significant changes
- L. Restricted Assets

1. Restricted Assets (Including Pledged)

Restricted Asset Category	Gross (Admitted & Nonadmitted) Restricted						
	Current Year					6	7
	1	2	3	4	5		
Total General Account (G/A)	G/A Supporting S/A Activity (a)	Total Separate Account (S/A) Restricted Assets	S/A Assets Supporting G/A Activity (b)	Total (1 plus 3)	Total From Prior Year	Increase/ (Decrease) (5 minus 6)	
a. Subject to contractual obligation for which liability is not shown	\$ -	\$ -	\$ -	\$ -	\$ -	\$ -	\$ -
b. Collateral held under security lending agreements	\$ 725,258,006	\$ -	\$ -	\$ -	\$ 725,258,006	\$ 550,211,856	\$ 175,046,150
c. Subject to repurchase agreements	\$ -	\$ -	\$ -	\$ -	\$ -	\$ -	\$ -
d. Subject to reverse repurchase agreements	\$ -	\$ -	\$ -	\$ -	\$ -	\$ -	\$ -
e. Subject to dollar repurchase agreements	\$ -	\$ -	\$ -	\$ -	\$ -	\$ -	\$ -
f. Subject to dollar reverse repurchase agreements	\$ -	\$ -	\$ -	\$ -	\$ -	\$ -	\$ -
g. Placed under option contracts	\$ -	\$ -	\$ -	\$ -	\$ -	\$ -	\$ -
h. Letter stock or securities restricted as to sale - excluding FHLB capital stock	\$ -	\$ -	\$ -	\$ -	\$ -	\$ -	\$ -
i. FHLB capital stock	\$95,035,000	\$ -	\$ -	\$ -	\$95,035,000	\$90,535,000	\$ 4,500,000
j. On deposit with states	\$ 1,657,081	\$ -	\$ -	\$ -	\$ 1,657,081	\$ 1,669,554	\$ (12,473)
k. On deposit with other regulatory bodies	\$ -	\$ -	\$ -	\$ -	\$ -	\$ -	\$ -
l. Pledged collateral to FHLB (including assets backing funding agreements)	\$ 3,423,527,950	\$ -	\$ -	\$ -	\$ 3,423,527,950	\$ 3,085,978,546	\$ 337,549,404
m. Pledged as collateral not captured in other categories	\$ 106,232,000	\$ -	\$ -	\$ -	\$ 106,232,000	\$63,290,200	\$42,941,800
n. Other restricted assets sheet	\$ -	\$ -	\$ -	\$ -	\$ -	\$ -	\$ -
p. Assets held under modco reinsurance agreements	\$ -	\$ -	\$ -	\$ -	\$ -	\$ -	\$ -
q. Assets held under funds withheld reinsurance agreements	\$ -	\$ -	\$ -	\$ -	\$ -	\$ -	\$ -
r. Total restricted assets (Sum of a through q)	\$ 4,351,710,037	\$ -	\$ -	\$ -	\$ 4,351,710,037	\$ 3,791,685,156	\$ 560,024,881

(a) Subset of Column 1

(b) Subset of Column 3

NOTES TO FINANCIAL STATEMENTS

Restricted Asset Category	Current Year						
	8 Total Non-admitted Restricted	9 Total Admitted Restricted (5 minus 8)	Percentage		12 Reported in General Interrogatories	13 Difference from Note and GI	14 GI Ref
			10 Gross (Admitted & Non-admitted) Restricted to Total Assets (c)	11 Admitted Restricted to Total Admitted Assets (d)			
a. Subject to contractual obligation for which liability is not shown	\$ -	\$ -	0.000%	0.000%	XXX	XXX	XXX
b. Collateral held under security lending agreements	\$ -	\$ 725,258,006	0.593%	0.595%			25.04 + 25.05
c. Subject to repurchase agreements	\$ -	\$ -	0.000%	0.000%			26.21
d. Subject to reverse repurchase agreements	\$ -	\$ -	0.000%	0.000%			26.22
e. Subject to dollar repurchase agreements	\$ -	\$ -	0.000%	0.000%			26.23
f. Subject to dollar reverse repurchase agreements	\$ -	\$ -	0.000%	0.000%			26.24
g. Placed under option contracts	\$ -	\$ -	0.000%	0.000%			26.25
h. Letter stock or securities restricted as to sale - excluding FHLB capital stock	\$ -	\$ -	0.000%	0.000%			26.26
i. FHLB capital stock	\$ -	\$ 95,035,000	0.078%	0.078%			26.27
j. On deposit with states	\$ -	\$ 1,657,081	0.001%	0.001%			26.28
k. On deposit with other regulatory bodies	\$ -	\$ -	0.000%	0.000%			26.29
l. Pledged collateral to FHLB (including assets backing funding agreements)	\$ -	\$ 3,423,527,950	2.798%	2.809%			26.31
m. Pledged as collateral not captured in other categories	\$ -	\$ 106,232,000	0.087%	0.087%			26.30
n. Other restricted assets	\$ -	\$ -	0.000%	0.000%			26.32
o. Collateral assets received and on balance sheet	\$ -	\$ -	0.000%	0.000%	XXX	XXX	XXX
p. Assets held under modco reinsurance agreements	\$ -	\$ -	0.000%	0.000%	XXX	XXX	XXX
q. Assets held under funds withheld reinsurance agreements	\$ -	\$ -	0.000%	0.000%	XXX	XXX	XXX
r. Total restricted assets (Sum of a through q)	\$ -	\$ 4,351,710,037	3.557%	3.571%	XXX	XXX	XXX

(c) Column 5 divided by Asset Page, Column 1, Line 28

(d) Column 9 divided by Asset Page, Column 3, Line 28

GI Reference	Difference between Note and GI (Per Column 13 above)	Explanation
25.04 + 25.05	\$ -	
26.21	\$ -	
26.22	\$ -	
26.23	\$ -	
26.24	\$ -	
26.25	\$ -	
26.26	\$ -	
26.27	\$ -	
26.28	\$ -	
26.29	\$ -	
26.31	\$ -	
26.30	\$ -	
26.32	\$ -	

2. Detail of Assets Pledged as Collateral Not Captured in Other Categories (Contracts that Share Similar Characteristics, Such as Reinsurance (excluding Modco/FWH) and Derivatives, Are Reported in the Aggregate)

Description of Assets	Gross (Admitted & Nonadmitted) Restricted							8 Total Current Year Admitted Restricted	Percentage	
	Current Year					6 Total From Prior Year	7 Increase/ (Decrease) (5 minus 6)		9 Gross (Admitted & Non-admitted) Restricted to Total Assets	10 Admitted Restricted to Total Admitted Assets
	1 Total General Account (G/A)	2 G/A Supporting S/A Activity (a)	3 Total Separate Account (S/A) Restricted Assets	4 S/A Assets Supporting G/A Activity (b)	5 Total (1 plus 3)					
Pledged on future contracts	\$106,232,000	\$ -	\$ -	\$ -	\$106,232,000	\$63,290,200	\$42,941,800	\$106,232,000	0.087%	0.087%
Total (c)	\$106,232,000	\$ -	\$ -	\$ -	\$106,232,000	\$63,290,200	\$42,941,800	\$106,232,000	0.087%	0.087%
Amount of Total pledged under derivative contracts	\$ -	\$ -	\$ -	\$ -	\$ -	\$ -	\$ -	\$ -		
Total Excluding Derivative Collateral (Total minus Amt of Total pledged under derivative contracts)	\$106,232,000	\$ -	\$ -	\$ -	\$106,232,000	\$63,290,200	\$42,941,800	\$106,232,000		

(a) Subset of column 1

(b) Subset of column 3

(c) Total Line for Columns 1 through 7 should equal 5L(1)m Columns 1 through 7 respectively and Total Line for Columns 8 through 10 should equal 5L(1)m Columns 9 through 11 respectively.

NOTES TO FINANCIAL STATEMENTS

3. Detail of Other Restricted Assets (Contracts that Share Similar Characteristics, Such as Reinsurance (exclude Modco/FWH) and Derivatives, Are Reported in the Aggregate)

Description of Assets	Gross (Admitted & Nonadmitted) Restricted					8	Percentage			
	Current Year						6	7	9	10
	1	2	3	4	5					
	Total General Account (G/A)	G/A Supporting S/A Activity (a)	Total Separate Account (S/A) Restricted Assets	S/A Assets Supporting G/A Activity (b)	Total (1 plus 3)	Total From Prior Year	Increase/ (Decrease) (5 minus 6)	Total Current Year Admitted Restricted	Gross (Admitted & Non-admitted) Restricted to Total Assets	Admitted Restricted to Total Admitted Assets
NONE					\$ -		\$ -	\$ -	0.000%	0.000%
Total (c)	\$ -	\$ -	\$ -	\$ -	\$ -	\$ -	\$ -	\$ -	XXX	XXX

(a) Subset of column 1

(b) Subset of column 3

(c) Total Line for Columns 1 through 7 should equal 5L(1)n Columns 1 through 7 respectively and Total Line for Columns 8 through 10 should equal 5L(1)n Columns 9 through 11 respectively.

4. Collateral Received and Assets Held under Modco/Funds Withheld (FWH) Reinsurance Agreements Reflected as Assets Within the Reporting Entity's Financial Statements

Assets	1 (BACV) Collateral ***	2 (BACV) Modco ****	3 (BACV) FWH *****	4 Fair Value Collateral	5 Fair Value Modco	6 Fair Value FWH	7 % of BACV to Total Assets (Admitted and Nonadmitted)*	8 % of BACV to Total Admitted Assets **
General Account:								
a. Cash, Cash Equivalents and Short-Term Investments	\$ -	\$ -	\$ -	\$ -	\$ -	\$ -	0.000%	0.000%
b. Schedule D, Part 1, Section 1	\$ -	\$ -	\$ -	\$ -	\$ -	\$ -	0.000%	0.000%
c. Schedule D, Part 1, Section 2	\$ -	\$ -	\$ -	\$ -	\$ -	\$ -	0.000%	0.000%
d. Schedule D, Part 2, Section 1	\$ -	\$ -	\$ -	\$ -	\$ -	\$ -	0.000%	0.000%
e. Schedule D, Part 2, Section 2	\$ -	\$ -	\$ -	\$ -	\$ -	\$ -	0.000%	0.000%
f. Schedule B	\$ -	\$ -	\$ -	\$ -	\$ -	\$ -	0.000%	0.000%
g. Schedule A	\$ -	\$ -	\$ -	\$ -	\$ -	\$ -	0.000%	0.000%
h. Schedule BA, Part 1	\$ -	\$ -	\$ -	\$ -	\$ -	\$ -	0.000%	0.000%
i. Schedule DL, Part 1	\$ -	\$ -	\$ -	\$ -	\$ -	\$ -	0.000%	0.000%
j. Other	\$ -	\$ -	\$ -	\$ -	\$ -	\$ -	0.000%	0.000%
k. Total Assets (a+b+c+d+e+f+g+h+i+j)	\$ -	\$ -	\$ -	\$ -	\$ -	\$ -	0.000%	0.000%
l. Percentage to Total FWH Assets (including Modco)	XXX	XXX	XXX	XXX	XXX	XXX	XXX	XXX
Separate Account:								
m. Cash, Cash Equivalents and Short-Term Investments	\$ -	\$ -	\$ -	\$ -	\$ -	\$ -	0.000%	0.000%
n. Schedule D, Part 1, Section 1	\$ -	\$ -	\$ -	\$ -	\$ -	\$ -	0.000%	0.000%
o. Schedule D, Part 1, Section 2	\$ -	\$ -	\$ -	\$ -	\$ -	\$ -	0.000%	0.000%
p. Schedule D, Part 2, Section 1	\$ -	\$ -	\$ -	\$ -	\$ -	\$ -	0.000%	0.000%
q. Schedule D, Part 2, Section 2	\$ -	\$ -	\$ -	\$ -	\$ -	\$ -	0.000%	0.000%
r. Schedule B	\$ -	\$ -	\$ -	\$ -	\$ -	\$ -	0.000%	0.000%
s. Schedule A	\$ -	\$ -	\$ -	\$ -	\$ -	\$ -	0.000%	0.000%
t. Schedule BA, Part 1	\$ -	\$ -	\$ -	\$ -	\$ -	\$ -	0.000%	0.000%
u. Schedule DL, Part 1	\$ -	\$ -	\$ -	\$ -	\$ -	\$ -	0.000%	0.000%
v. Other	\$ -	\$ -	\$ -	\$ -	\$ -	\$ -	0.000%	0.000%
w. Total Assets (m+n+o+p+q+r+s+t+u+v)	\$ -	\$ -	\$ -	\$ -	\$ -	\$ -	0.000%	0.000%
x. Percentage to Total FWH Assets (including Modco)	XXX	XXX	XXX	XXX	XXX	XXX	XXX	XXX

* k=Sum of Columns 1, 2, and 3 divided by Asset Page, Line 26 (Column 1)

w=Sum of Columns 1, 2, and 3 divided by Asset Page, Line 27 (Column 1)

** k=Sum of Columns 1, 2, and 3 divided by Asset Page, Line 26 (Column 3)

w=Sum of Columns 1, 2, and 3 divided by Asset Page, Line 27 (Column 3)

*** k (Collateral BACV) should equal Note 5L(1) Column 1, Line o.

w (Collateral BACV) should equal Note 5L(1) Column 2, Line o.

**** k (Modco BACV) should equal Note 5L(1) Column 1, Line p.

w (Modco BACV) should equal Note 5L(1) Column 2, Line p.

***** k (FWH BACV) should equal Note 5L(1) Column 1, Line q.

w (FWH BACV) should equal Note 5L(1) Column 2, Line q.

NOTES TO FINANCIAL STATEMENTS

Assets	9 Book/Adjusted Carrying Value (BACV)	10	11	12	13	14	15
		Related Party Code					
	FWH Including Modco	1	2	3	4	5	6
General Account:							
a. Cash, Cash Equivalents and Short-Term Investments	\$ -	\$ -	\$ -	\$ -	\$ -	\$ -	\$ 693,258,006
b. Schedule D, Part 1, Section 1	\$ -	\$ -	\$ -	\$ -	\$ -	\$ -	\$ 32,000,000
c. Schedule D, Part 1, Section 2	\$ -	\$ -	\$ -	\$ -	\$ -	\$ -	\$ -
d. Schedule D, Part 2, Section 1	\$ -	\$ -	\$ -	\$ -	\$ -	\$ -	\$ -
e. Schedule D, Part 2, Section 2	\$ -	\$ -	\$ -	\$ -	\$ -	\$ -	\$ -
f. Schedule B	\$ -	\$ -	\$ -	\$ -	\$ -	\$ -	\$ -
g. Schedule A	\$ -	\$ -	\$ -	\$ -	\$ -	\$ -	\$ -
h. Schedule BA, Part 1	\$ -	\$ -	\$ -	\$ -	\$ -	\$ -	\$ -
i. Schedule DL, Part 1	\$ -	\$ -	\$ -	\$ -	\$ -	\$ -	\$ -
j. Other	\$ -	\$ -	\$ -	\$ -	\$ -	\$ -	\$ -
k. Total Assets (a+b+c+d+e+f+g+h+i+j)	\$ -	\$ -	\$ -	\$ -	\$ -	\$ -	\$ 725,258,006
l. Percentage to Total FWH Assets (including Modco)	0.000%	0.000%	0.000%	0.000%	0.000%	0.000%	0.000%
Separate Account:							
m. Cash, Cash Equivalents and Short-Term Investments	\$ -	\$ -	\$ -	\$ -	\$ -	\$ -	\$ -
n. Schedule D, Part 1, Section 1	\$ -	\$ -	\$ -	\$ -	\$ -	\$ -	\$ -
o. Schedule D, Part 1, Section 2	\$ -	\$ -	\$ -	\$ -	\$ -	\$ -	\$ -
p. Schedule D, Part 2, Section 1	\$ -	\$ -	\$ -	\$ -	\$ -	\$ -	\$ -
q. Schedule D, Part 2, Section 2	\$ -	\$ -	\$ -	\$ -	\$ -	\$ -	\$ -
r. Schedule B	\$ -	\$ -	\$ -	\$ -	\$ -	\$ -	\$ -
s. Schedule A	\$ -	\$ -	\$ -	\$ -	\$ -	\$ -	\$ -
t. Schedule BA, Part 1	\$ -	\$ -	\$ -	\$ -	\$ -	\$ -	\$ -
u. Schedule DL, Part 1	\$ -	\$ -	\$ -	\$ -	\$ -	\$ -	\$ -
v. Other	\$ -	\$ -	\$ -	\$ -	\$ -	\$ -	\$ -
w. Total Assets (m+n+o+p+q+r+s+t+u+v)	\$ -	\$ -	\$ -	\$ -	\$ -	\$ -	\$ -
x. Percentage to Total FWH Assets (including Modco)	0.000%	0.000%	0.000%	0.000%	0.000%	0.000%	0.000%

	1 Amount	2 % of Liability to Total Liabilities *
y. Recognized Obligation to Return Collateral Asset (General Account)	\$ 725,258,006	1.044%
z. Recognized Obligation to Return Collateral Asset (Separate Account)	\$ -	0.000%
aa. Recognized Obligation for Modco assets (General Account)	\$ -	0.000%
bb. Recognized Obligation for Modco assets (Separate Account)	\$ -	0.000%
cc. Recognized Obligation for FWH (excluding Modco) assets (General Account)	\$ -	0.000%
dd. Recognized Obligation for FWH (excluding Modco) assets (Separate Account)	\$ -	0.000%

* y + aa + cc = Column 1 divided by Liability Page, Line 26 (Column 1)
z + bb + dd = Column 1 divided by Liability Page, Line 27 (Column 1)

5. Disclose whether any of the assets held as collateral or under modified coinsurance (Modco) or funds withheld reinsurance (FWH) agreements have been pledged for another purpose specific to the insurance reporting entity (not for the benefit of the reinsurer). For example, if the insurance reporting entity has used these assets as the collateral in a securities lending agreement, a repo transaction, pledged as collateral to the FHLB, etc. (For Modco/FWH assets, items pledged on behalf of the reinsurer shall not be captured.)

	Collateral Held	Modco	FWH
a. Securities Lending	\$ -	\$ -	\$ -
b. Repo / repurchase Agreements	\$ -	\$ -	\$ -
c. Placed under option contracts	\$ -	\$ -	\$ -
d. On deposit with states	\$ -	\$ -	\$ -
e. On deposit with other regulatory bodies	\$ -	\$ -	\$ -
f. Pledged as collateral to FHLB (including assets backing funding agreements)	\$ -	\$ -	\$ -
g. Pledged as collateral not captured in other categories	\$ -	\$ -	\$ -
h. Total (a+b+c+d+e+f+g)	\$ -	\$ -	\$ -

- M. Working Capital Finance Investments
Thrivent holds no working capital finance investments as of March 31, 2026.
- N. Offsetting and Netting of Assets and Liabilities
Thrivent presents securities lending agreements and derivatives on a gross basis in the financial statements.
- O. 5GI Securities
Thrivent held no "5GI" securities as of March 31, 2026.
- P. Short Sales
No significant changes
- Q. Prepayment Penalty and Acceleration Fees
No significant changes
- R. Reporting Entity's Share of Cash Pool by Asset Type
Thrivent has no cash pools as of March 31, 2026.
- S. Aggregate Collateral Loans by Qualifying Investment Collateral
No significant changes

NOTES TO FINANCIAL STATEMENTS

NOTE 6 Joint Ventures, Partnerships and Limited Liability Companies

No significant changes

NOTE 7 Investment Income

No significant changes

NOTE 8 Derivative Instruments

No significant changes

NOTE 9 Income Taxes

Thrivent, as a fraternal benefit society, qualifies as a tax-exempt organization under the Internal Revenue Code. Accordingly, income earned by Thrivent is generally exempt from taxation; therefore, no provision for income taxes has been recorded. Thrivent may pay income taxes on certain unrelated business activity. The reporting entity (or the controlled group of corporations of which the reporting entity is a member) has determined that they do not expect to be liable for Corporate Alternative Minimum Tax in 2026.

NOTE 10 Information Concerning Parent, Subsidiaries, Affiliates and Other Related Parties
A. Nature of the Relationship

No significant changes

B. Transactions

Year-to-date as of March 31, 2026, Thrivent received cash distributions of \$132 million and \$86 million from majority-owned limited partnerships Thrivent White Rose Funds (WRF) and Twin Bridge Funds (TBF), respectively. Year-to-date as of March 31, 2026, Thrivent made cash contributions as contributed capital to WRF and TBF in the amounts of \$163 million and \$85 million, respectively.

Year-to-date as of March 31, 2026, Thrivent received cash distributions of \$26 million from Holdings treated as dividends and reported in net investment income.

Year-to-date as of March 31, 2026, Thrivent received \$10 million from Thrivent Education Funding (TEF) that was treated as return of capital.

In May 2022, a separate VFN was acquired from TEF that is supported by an indenture agreement, last amended in December 2022, and allowed for a maximum aggregate principal amount of \$750 million and is collateralized by point-of-sale unsecured consumer loans. The VFN is reported as a bond in the accompanying Statutory-Basis Statement of Assets and had an outstanding balance of \$0 as of December 31, 2025. During 2025, Thrivent invested \$184 million in the VFN and received \$760 million of principal payments.

In July 2022, Holdings purchased 69.4% of Blue Rock Holdco, LLC. (Blue Rock), for \$222 million. As of March 31, 2026, Holdings currently owns 69.6% of Blue Rock. Blue Rock is a holding company operating as a marketing and servicing provider of private student loans through various subsidiary entities. The admitted value of Holdings on Thrivent's balance sheet is valued in accordance with SSAP No. 97. As part of the purchase acquisition, Blue Rock purchased College Avenue Student Loans (CASL) a private student loan originator and servicer.

In December 2023, White Rose CFO 2023 Holdings, LLC (Issuer), a wholly owned subsidiary of Thrivent, issued a Collateralized Fund Obligation (CFO) whereby debt was issued to third parties. Issuer made available to third party investors approximately \$400 million in fixed rate debt. Upon issuance of the debt, approximately \$364 million in net proceeds were returned from Issuer to Thrivent. Thrivent retained approximately \$436 million of an equity investment in the CFO structure in the form of a residual tranche. Year-to-date as of March 31, 2026, Thrivent received cash distributions of \$0. The residual tranche is reported in Other Invested Assets in the accompanying Statutory-Basis Statement of Assets, Liabilities and Surplus and is reported at the lower cost or market, totaling \$397 million as of March 31, 2026.

In support of the CFO, Thrivent transferred their interest in portions of certain investments in WRF with a fair value of approximately \$800 million to White Rose CFO 2023, LLC (Asset HoldCo), a wholly-owned, bankruptcy-remote subsidiary of Thrivent as underlying collateral for the CFO. Thrivent served as the named investment manager for the CFO prior to the establishment of Thrivent Investment Capital Advisors, LLC (TICA), a registered investment advisor and indirectly wholly owned subsidiary of Thrivent. Effective January 1, 2026, the investment management arrangement between Asset HoldCo and Thrivent was transitioned to TICA, including the associated management fee provisions set forth in the executed investment management agreement. Accordingly, for the year to date period ended March 31, 2026, TICA received \$0.3 million in management fees.

In December 2024 and March 2026, Thrivent acquired a multi-tranche debt security issued by CASL 2024-4 and CASL 2026-1 respectively, which includes six debt tranches and a residual tranche that are collateralized by student loans. CASL served as the sponsor of the private securitization and the servicer and administrator of the CASL 2024-4- and CASL 2026-1 Trusts. The individual tranches are reported as bonds and the residual tranche is reported as other invested assets in the accompanying Statutory-Basis Statement of Assets. These securities had an aggregate outstanding balance of \$2 billion for CASL 2024-4 and \$600 million for CASL 2026-1 as of March 31, 2026.

In March 2025, Badger FBN 2025 Holdings, LLC (FBN Issuer), a wholly owned subsidiary of Thrivent, issued a Fund Backed Note (FBN), a CFO structure, whereby debt was issued to a third party. FBN Issuer made available to the third party investor approximately \$600 million in fixed rate debt. Upon issuance of the debt, approximately \$557 million in net proceeds were returned from FBN Issuer to Thrivent. Thrivent retained approximately \$626 million of an equity investment in the FBN structure in the form of a residual tranche. Year-to-date as of March 31, 2026, Thrivent received cash distributions of \$0. The residual tranche is reported in Other Invested Assets in the accompanying Statutory-Basis Statement of Assets, Liabilities and Surplus and is reported at the lower cost of market, totaling \$601 million as of March 31, 2026.

In support of the FBN, Thrivent transferred their interest in portions of certain investments in WRF with a fair value of approximately \$1.2 billion to Badger FBN 2025, LLC (FBN Asset HoldCo), a wholly owned, bankruptcy-remote subsidiary of Thrivent as underlying collateral for the FBN. The transferred WRF assets had a cost of approximately \$1.1 billion and carried an unrealized gain of approximately \$80 million when they were transferred to FBN Asset HoldCo. Thrivent then contributed its entire investment in FBN Asset HoldCo to FBN Issuer, with no impact to surplus. Thrivent served as the named investment manager for the FBN prior to the establishment of TICA, a registered investment advisor and indirectly wholly owned subsidiary of Thrivent. Effective January 1, 2026, the investment management arrangement between Asset HoldCo and Thrivent was transitioned to TICA, including the associated management fee provisions set forth in the executed investment management agreement. Accordingly, for the year to date period ended March 31, 2026, TICA received \$0.5 million in management fees.

On June 1, 2025, Thrivent Bank (Bank) launched via a merger with Thrivent Federal Credit Union (TFCU). Thrivent contributed capital of \$356 million (via Holdings) to launch the Bank and to fund the TFCU member buyout.

In August 2025, Thrivent launched TICA. TICA is reported in affiliated common stocks in the accompanying Statutory-Basis Statement of Assets, Liabilities and Surplus and has a fair value of \$5 million as of March 31, 2026.

In September 2025, Thrivent entered into an agreement, whereby certain private equity limited partnership interests with a fair value of \$1.6 billion were contributed to Trout Holdings GP, LLC. The cash payments were received in December 2025 and March 2026. Thrivent is taking a 30% equity stake in Trout Holdings GP, LLC and is reported in other invested assets and has fair value of \$520 million as of March 31, 2026.

In December 2025, Thrivent entered into a Backstop Purchase Agreement, where Thrivent has agreed to provide a guarantee to a third party and CASL to purchase the loans originated and held at the third party should CASL breach their purchase obligation. Thrivent will be providing the guarantee up to the maximum backstop amount of \$1 billion, which could create additional future exposure from multiple disbursement loans not fully disbursed by date of purchase. As of March 31, 2026, CASL has not breached their purchase obligation and Thrivent was not required to purchase loans under the terms of the agreement.

C-O. No significant changes

NOTES TO FINANCIAL STATEMENTS

NOTE 11 Debt

A. Debt Including Funding Agreements

In August 2023, after board approval and review from the State of Wisconsin Office of the Commissioner of Insurance, Thrivent began issuing funding agreements to the FHLB. As of March 31, 2026, Thrivent had \$2.1 billion of funding agreements outstanding, plus accrued interest of \$7 million. Year-to-date interest expense as of March 31, 2026 was \$20 million. Interest related to outstanding funding agreements is accrued at a weighted average of 3.84%, with stated maturity dates through 2029. The funding agreements are required to be collateralized by assets with a market value at least equal to the outstanding principal. As of March 31, 2026, securities were pledged as collateral with a statement value of \$3.4 billion and a fair value of \$3.1 billion.

On May 22, 2025, Thrivent entered into an irrevocable, evergreen standby letter of credit agreement with the Federal Home Loan Bank of Chicago in the amount of \$85 million. The initial expiration date of the letter of credit is May 22, 2026, and a final expiration date of May 22, 2030. Thrivent Bank is designated as the beneficiary. The annual fee associated with the letter of credit is \$127,500.

B. FHLB (Federal Home Loan Bank) Agreements

(1) Thrivent is a member of the FHLB of Chicago. Through its membership, Thrivent has conducted business activity (borrowings and funding agreements) with the FHLB. Thrivent's strategy is to utilize funds from the FHLB to optimize liquidity and for spread investment purposes. Additional FHLB activity-based stock purchases are required based upon the amount of borrowed funds or funding agreements from the FHLB. Thrivent is required to post acceptable forms of collateral for any borrowed funds or funding agreements from the FHLB. In the event of default, the FHLB's recovery on the collateral is limited to the amount of Thrivent's outstanding liability to the FHLB. FHLB activity will be limited to the general account. As of March 31, 2026, Thrivent has an internally approved maximum borrowing capacity for the FHLB of \$6 billion. Thrivent established this limit in accordance with its overall risk management process. These borrowings and funding agreements are included in line 22 and line 3 on page 3, Liabilities, Surplus and Other Funds, respectively.

(2) FHLB Capital Stock

a. Aggregate Totals

	1 Total 2+3	2 General Account	3 Separate Accounts
1. Current Year			
(a) Membership Stock - Class A	\$ -	\$ -	\$ -
(b) Membership Stock - Class B	\$ -	\$ -	\$ -
(c) Activity Stock	\$ 95,035,000	\$ 95,035,000	\$ -
(d) Excess Stock	\$ -	\$ -	\$ -
(e) Aggregate Total (a+b+c+d)	\$ 95,035,000	\$ 95,035,000	\$ -
(f) Actual or estimated Borrowing Capacity as Determined by the Insurer	\$ 6,000,000,000	XXX	XXX
2. Prior Year-end			
(a) Membership Stock - Class A	\$ -	\$ -	\$ -
(b) Membership Stock - Class B	\$ -	\$ -	\$ -
(c) Activity Stock	\$ 90,535,000	\$ 90,535,000	\$ -
(d) Excess Stock	\$ -	\$ -	\$ -
(e) Aggregate Total (a+b+c+d)	\$ 90,535,000	\$ 90,535,000	\$ -
(f) Actual or estimated Borrowing Capacity as Determined by the Insurer	\$ 6,000,000,000	XXX	XXX

11B(2)a1(f) should be equal to or greater than 11B(4)a1(d)

11B(2)a2(f) should be equal to or greater than 11B(4)a2(d)

b. Membership Stock (Class A and B) Eligible and Not Eligible for Redemption

	1		2		Eligible for Redemption			
	Current Year Total (2+3+4+5+6)	Not Eligible for Redemption	Less Than 6 Months	6 Months to Less Than 1 Year	1 to Less Than 3 Years	3 to 5 Years	6	6
Membership Stock								
1. Class A	\$ -	\$ -	\$ -	\$ -	\$ -	\$ -	\$ -	\$ -
2. Class B	\$ -	\$ -	\$ -	\$ -	\$ -	\$ -	\$ -	\$ -

11B(2)b1 Current Year Total (Column 1) should equal 11B(2)a1(a) Total (Column 1)

11B(2)b2 Current Year Total (Column 1) should equal 11B(2)a1(b) Total (Column 1)

(3) Collateral Pledged to FHLB

a. Amount Pledged as of Reporting Date

	1 Fair Value	2 Carrying Value	3 Aggregate Total Borrowing
1. Current Year Total General and Separate Accounts Total Collateral Pledged (Lines 2+3)	\$ 3,149,779,442	\$ 3,423,527,950	\$ 2,110,000,000
2. Current Year General Account Total Collateral Pledged	\$ 3,149,779,442	\$ 3,423,527,950	\$ 2,110,000,000
3. Current Year Separate Accounts Total Collateral Pledged	\$ -	\$ -	\$ -
4. Prior Year-end Total General and Separate Accounts Total Collateral Pledged	\$ 2,825,530,786	\$ 3,085,978,546	\$ 2,010,000,000

11B(3)a1 (Column 2) should be equal to or less than 11B(3)b1 (Column 2)

11B(3)a2 (Column 2) should be equal to or less than 11B(3)b2 (Column 2)

11B(3)a3 (Column 2) should be equal to or less than 11B(3)b3 (Column 2)

11B(3)a4 (Column 2) should be equal to or less than 11B(3)b4 (Column 2)

b. Maximum Amount Pledged During Reporting Period

	1 Fair Value	2 Carrying Value	3 Amount Borrowed at Time of Maximum Collateral
1. Current Year Total General and Separate Accounts Maximum Collateral Pledged (Lines 2+3)	\$ 3,149,779,442	\$ 3,423,527,950	\$ 2,110,000,000
2. Current Year General Account Maximum Collateral Pledged	\$ 3,149,779,442	\$ 3,423,527,950	\$ 2,110,000,000
3. Current Year Separate Accounts Maximum Collateral Pledged	\$ -	\$ -	\$ -
4. Prior Year-end Total General and Separate Accounts Maximum Collateral Pledged	\$ 2,862,796,660	\$ 3,191,153,058	\$ 2,010,000,000

NOTES TO FINANCIAL STATEMENTS

(4) Borrowing from FHLB
a. Amount as of Reporting Date

	1	2	3	4
	Total 2+3	General Account	Separate Accounts	Funding Agreements Reserves Established
1. Current Year				
(a) Debt	\$ -	\$ -	\$ -	XXX
(b) Funding Agreements	\$ 2,110,000,000	\$ 2,110,000,000	\$ -	\$ 2,116,619,153
(c) Other	\$ -	\$ -	\$ -	XXX
(d) Aggregate Total (a+b+c)	\$ 2,110,000,000	\$ 2,110,000,000	\$ -	\$ 2,116,619,153
2. Prior Year end				
(a) Debt	\$ -	\$ -	\$ -	XXX
(b) Funding Agreements	\$ 2,010,000,000	\$ 2,010,000,000	\$ -	\$ 2,016,636,983
(c) Other	\$ -	\$ -	\$ -	XXX
(d) Aggregate Total (a+b+c)	\$ 2,010,000,000	\$ 2,010,000,000	\$ -	\$ 2,016,636,983

b. Maximum Amount During Reporting Period (Current Year)

	1	2	3
	Total 2+3	General Account	Separate Accounts
1. Debt	\$ -	\$ -	\$ -
2. Funding Agreements	\$ 2,110,000,000	\$ 2,110,000,000	\$ -
3. Other	\$ -	\$ -	\$ -
4. Aggregate Total (1+2+3)	\$ 2,110,000,000	\$ 2,110,000,000	\$ -

11B(4)b4 (Columns 1, 2 and 3) should be equal to or greater than 11B(4)a1(d) (Columns 1, 2 and 3 respectively)

c. FHLB - Prepayment Obligations

	Does the company have prepayment obligations under the following arrangements (YES/NO)?
1. Debt	No
2. Funding Agreements	No
3. Other	No

C. Unused commitments and lines of credit for financing arrangements:

	Current Year		Prior Year	
	Unused Commitments	Unused Lines Of Credit	Unused Commitments	Unused Lines Of Credit
1. Short-Term (contracts terminating in 12 months or less)	\$ -	\$ -	\$ -	\$ -
2. Long-Term (contracts terminating in more than 12 months)	\$ 3,890,000,000	\$ -	\$ 4,000,000,000	\$ -
3. Total	\$ 3,890,000,000	\$ -	\$ 4,000,000,000	\$ -

NOTE 12 Retirement Plans, Deferred Compensation, Postemployment Benefits and Compensated Absences and Other Postretirement Benefit Plans

A. Defined Benefit Plan

Thrivent has a qualified noncontributory defined benefit retirement plan which provides benefits to substantially all home office and field employees upon retirement. Thrivent also provides certain health care and life insurance benefits for substantially all retired home office and field personnel.

	Pension Benefits		Postretirement Benefits		Special or Contractual Benefits Per SSAP No. 11	
	2026	2025	2026	2025	2026	2025
(4) Components of net periodic benefit cost						
a. Service cost	\$ 6,419,040	\$ 23,812,527	\$ 383,571	\$ 1,295,317	\$ -	\$ -
b. Interest cost	\$ 14,327,006	\$ 57,772,566	\$ 890,252	\$ 3,776,846	\$ -	\$ -
c. Expected return on plan assets	\$ (23,040,023)	\$ (85,313,464)	\$ -	\$ -	\$ -	\$ -
d. Transition asset or obligation	\$ -	\$ -	\$ -	\$ -	\$ -	\$ -
e. Gains and losses	\$ -	\$ -	\$ (249,162)	\$ (1,260,112)	\$ -	\$ -
f. Prior service cost or credit	\$ -	\$ -	\$ (231,158)	\$ (996,648)	\$ -	\$ -
g. Gain or loss recognized due to a settlement or curtailment	\$ -	\$ -	\$ -	\$ -	\$ -	\$ -
h. Total net periodic benefit cost	\$ (2,293,977)	\$ (3,728,371)	\$ 793,503	\$ 2,815,403	\$ -	\$ -

B - I. No significant changes

NOTE 13 Capital and Surplus, Dividend Restrictions and Quasi-Reorganizations

No significant changes

NOTE 14 Liabilities, Contingencies and Assessments

A. Contingent Commitments

As of June 1, 2025, Thrivent Bank is party to a revolving credit facility ("Revolver") with Thrivent, under which Thrivent Bank may borrow up to an aggregate principal amount of \$85 million from Thrivent. The Revolver has a one-year term, maturing on May 31, 2026, and automatically renews for successive one-year renewal terms unless terminated by either party in accordance with the terms of the agreement.

Thrivent Bank may request advances under the Revolver from time to time, subject to the overall \$85 million borrowing limit. Repayment of principal on each advance is governed by the specific repayment schedule agreed to at the time of the advance. All remaining principal and accrued interest are payable in full upon the maturity of the Revolver, including any applicable renewal term.

Interest on amounts outstanding under the Revolver accrues at an annual rate equal to the Secured Overnight Financing Rate (SOFR) plus 0.75%, and is payable semi-annually in arrears on June 1 and December 1 of each year.

The Revolver provides Thrivent Bank with committed funding capacity to support its ongoing liquidity and operational needs.

B-F. No significant changes

NOTES TO FINANCIAL STATEMENTS

NOTE 15 Leases

No significant changes

NOTE 16 Information About Financial Instruments With Off-Balance Sheet Risk and Financial Instruments With Concentrations of Credit Risk

No significant changes

NOTE 17 Sale, Transfer and Servicing of Financial Assets and Extinguishments of Liabilities**A. Transfers of Receivables Reported as Sales**

Thrivent did not enter into any transfers of receivables reported as sales during the periods ended March 31, 2026 and December 31, 2025.

B. Transfer and Servicing of Financial Assets**(1) Description of any Loaned Securities**

Securities loaned under Thrivent's securities lending agreement are carried in the accompanying Assets page at amortized cost or fair value, depending on the nature of the security and as prescribed by the NAIC guidelines. Thrivent measures the fair value of securities loaned against collateral received on a daily basis. Additional collateral is obtained as necessary to ensure such transactions are adequately collateralized. The SAP fair value of loaned securities on March 31, 2026 is \$725 million.

C. Wash Sales

(1) In the normal course of Thrivent's investment management activities, securities are periodically sold and repurchased within 30 days of the sale date to enhance total return on the investment portfolio.

(2) The details by NAIC designation 3 or below, or unrated of securities sold during the current quarter and reacquired within 30 days of the sale date are:

Description	NAIC Designation	Number of Transactions	Book Value of Securities Sold	Cost of Securities Repurchased	Gain (Loss)
Bonds	3	1	330,537	440,389	109,873
Bonds	4	3	1,568,884	1,631,245	-50,181
Common Stocks		17	1,939,734	2,432,515	461,749

NOTE 18 Gain or Loss to the Reporting Entity from Uninsured Plans and the Uninsured Portion of Partially Insured Plans

No significant changes

NOTE 19 Direct Premium Written/Produced by Managing General Agents/Third Party Administrators

No significant changes

NOTE 20 Fair Value Measurements**A.****(1) Fair Value Measurements at Reporting Date**

Description for each class of asset or liability	(Level 1)	(Level 2)	(Level 3)	Net Asset Value (NAV)	Total
a. Assets at fair value					
Bonds	\$ 531,915,070	\$ -	\$ -	\$ -	\$ 531,915,070
Unaffiliated preferred stocks	\$ -	\$ 178,223,655	\$ -	\$ -	\$ 178,223,655
Unaffiliated common stocks	\$ 765,078,164	\$ -	\$ -	\$ -	\$ 765,078,164
Cash, Cash Equivalents and Short-term investments	\$ 493,615,701	\$ -	\$ -	\$ -	\$ 493,615,701
Assets held in Separate Accounts	\$ -	\$ 37,374,712,577	\$ -	\$ -	\$ 37,374,712,577
Derivatives	\$ 81,150	\$ 575,039,913	\$ 98,592,494	\$ -	\$ 673,713,557
Total assets at fair value/NAV	\$ 1,790,690,085	\$ 38,127,976,145	\$ 98,592,494	\$ -	\$ 40,017,258,724

Description for each class of asset or liability	(Level 1)	(Level 2)	(Level 3)	Net Asset Value (NAV)	Total
b. Liabilities at fair value					
Other liabilities	\$ -	\$ 15,270,047	\$ 46,150,416	\$ -	\$ 61,420,463
Total liabilities at fair value	\$ -	\$ 15,270,047	\$ 46,150,416	\$ -	\$ 61,420,463

(2) Fair Value Measurements in (Level 3) of the Fair Value hierarchy

Description	Ending Balance as of Prior Quarter End	Transfers into Level 3	Transfers out of Level 3	Total gains and (losses) included in Net Income	Total gains and (losses) included in Surplus	Purchases	Issuances	Sales	Settlements	Ending Balance for Current Quarter End
a. Assets										
Derivatives	\$ 170,221,667	\$ -	\$ -	\$ 21,717,006	\$ (53,936,796)	\$ 29,977,501	\$ -	\$ (69,386,884)	\$ -	\$ 98,592,494
Total Assets	\$ 170,221,667	\$ -	\$ -	\$ 21,717,006	\$ (53,936,796)	\$ 29,977,501	\$ -	\$ (69,386,884)	\$ -	\$ 98,592,494

Description	Ending Balance as of Prior Quarter End	Transfers into Level 3	Transfers out of Level 3	Total gains and (losses) included in Net Income	Total gains and (losses) included in Surplus	Purchases	Issuances	Sales	Settlements	Ending Balance for Current Quarter End
b. Liabilities										
Other liabilities	\$ 101,302,054	\$ -	\$ -	\$ (12,561,943)	\$ (44,848,309)	\$15,667,936	\$ -	\$ (13,409,322)	\$ -	\$ 46,150,416
Total Liabilities	\$ 101,302,054	\$ -	\$ -	\$ (12,561,943)	\$ (44,848,309)	\$15,667,936	\$ -	\$ (13,409,322)	\$ -	\$ 46,150,416

(3) Policies when Transfers Between Levels are Recognized

Transfers between fair value hierarchy levels are recognized at the end of the reporting period.

NOTES TO FINANCIAL STATEMENTS

(4) Description of Valuation Techniques and Inputs Used in Fair Value Measurement

The financial instruments of Thrivent have been classified, for disclosure purposes, into one of three categories based on the evaluation of the amount of observable and unobservable inputs used to determine fair value.

Fair Value Descriptions

Level 1 Financial Instruments

Level 1 financial instruments reported at fair value include certain bonds, certain unaffiliated common stocks, certain cash equivalents, certain derivatives, and exchange traded funds. Bonds, unaffiliated common stocks, and exchange traded funds are primarily valued using quoted prices in active markets. Cash equivalents consist of money market mutual funds whose fair value is based on the quoted daily net asset values of the invested funds.

Level 1 financial instruments not reported at fair value include certain bonds, which are priced based on quoted market prices, and primarily include U.S. Treasury bonds.

Level 2 Financial Instruments

Level 2 financial instruments reported at fair value include certain unaffiliated common stocks, other invested assets, and certain derivatives, and are valued based on market quotes where the financial instruments are not considered actively traded. Mutual funds are reported at fair value, which are based on net asset values from fund managers. The fair values for separate account assets are based on published daily net asset values of the funds in which the separate accounts are invested.

Level 2 financial instruments not reported at fair value includes certain bonds, certain unaffiliated common stocks, unaffiliated preferred stocks, cash, cash equivalents and short-term investments, other invested assets, liabilities related to separate accounts and other liabilities.

Bonds not reported at fair value are priced using a third-party pricing vendor and include certain corporate debt securities and asset-backed securities. Pricing from a third-party pricing vendor varies by asset class but generally includes inputs such as estimated cash flows, benchmark yields, reported trades, issuer spreads, bids, offers, credit quality, industry events and economic events. If Thrivent is unable to obtain a price from a third-party pricing vendor, management may obtain broker quotes or utilize an internal pricing model specific to the asset. The internal pricing models apply practices that are standard among the industry and utilize observable market data.

Fair values of unaffiliated common stocks not reported at fair value primarily consist of FHLB activity-based stock and are based on direct quotes from FHLB.

Fair values of unaffiliated preferred stocks not reported at fair value are based on market quotes where these securities are not considered actively traded.

Cash and cash equivalents not reported at fair value consist of demand deposit and highly liquid investments purchased with an original maturity date of three months or less. Short-term investments not reported at fair value consist of investments in commercial paper and agency notes with contractual maturities of one year or less at the time of acquisition. The carrying amounts for cash, cash equivalents and short-term investments approximate their fair values.

Other invested assets not reported at fair value include investments in surplus notes in which the fair values are based on quoted market prices.

The carrying amounts of liabilities related to separate accounts reflect the amounts in the separate account assets and approximate their fair values.

Certain derivative liabilities are reported at fair values and are derived from broker quotes.

Fair values on borrowed money and funding agreements from the FHLB (included in deposit liabilities), are equal to unpaid principal balance, including accrued interest, net of unamortized discount or premium.

Level 3 Financial Instruments

Level 3 financial instruments reported at fair value include other invested assets and certain derivatives. The fair value is determined using independent broker quotes.

Level 3 financial instruments not reported at fair value include certain bonds, unaffiliated preferred stocks, mortgage loans, real estate, contract loans, limited partnerships, other invested assets, deferred annuities, other deposit contracts and other liabilities.

Level 3 bonds not reported at fair value include private placement debt securities and convertible bonds. Private placement debt securities are valued using internal pricing models specific to the assets using unobservable inputs such as issuer spreads, estimated cash flows, internal credit ratings and volatility adjustments. Market comparable discount rates ranging from 1% to 8% are used as the base rate in the discounted cash flows used to determine the fair value of certain assets. Increases or decreases in the credit spreads on the comparable assets could cause the fair value of assets to significantly decrease or increase, respectively. Additionally, Thrivent may adjust the base discount rate or the modeled price by applying an illiquidity premium, given the highly structured nature of certain assets. Convertible bonds are valued using third party broker quotes to determine fair value.

Unaffiliated preferred stocks are valued using third-party broker quotes to determine fair value.

The fair values for mortgage loans are estimated using discounted cash flow analyses based on interest rates currently being offered for similar loans to borrowers with similar credit ratings. Loans with similar characteristics are aggregated for purposes of the calculations.

The fair value of real estate properties held-for-sale is based on current market price assessments, current purchase agreements or market appraisals.

Contract loans are generally carried at the loans' aggregate unpaid balance which approximate the fair values.

Limited partnerships consist primarily of equity limited partnerships which are generally valued using NAV as a practical expedient.

Other invested assets primarily include residual tranches, non-collateral loans, and surplus notes. Residual tranches are carried at either the lower of amortized cost or fair value or the underlying audited equity of the investee. Non-collateral loans and surplus notes are carried at amortized cost.

Liabilities primarily include deferred annuities, other deposit contracts and certain derivatives. The fair values for deferred annuities and other deposit contracts, which include supplementary contracts without life contingencies, deferred income settlement options and refunds on deposit are estimated to be the cash surrender value payable upon immediate withdrawal. Derivatives fair values are derived from broker quotes.

(5) Fair Value Disclosures

The fair value disclosures for derivative assets and liabilities held at fair value on a gross basis are included in paragraph 1 above. Certain derivative assets and liabilities have been classified as Level 3 and the disclosures required are incorporated into paragraphs 2-4 above.

B. Fair Value Reporting under SSAP No.100 and Other Accounting Pronouncements

Thrivent elects to disclose only fair value per SSAP No. 100R, Fair Value.

NOTES TO FINANCIAL STATEMENTS

C. Aggregate fair value for all financial instruments and the level within the fair value hierarchy in which the fair value measurements in their entirety fall.

Type of Financial Instrument	Aggregate Fair Value	Admitted Assets	(Level 1)	(Level 2)	(Level 3)	Net Asset Value (NAV)	Not Practicable (Carrying Value)
Financial Assets:							
Bonds	\$ 53,397,859,641	\$ 55,919,811,537	\$ 1,830,182,287	\$ 35,558,468,020	\$ 16,009,209,333	\$ -	\$ -
Unaffiliated preferred stocks	\$ 555,435,159	\$ 541,705,463	\$ -	\$ 236,347,259	\$ 319,087,900	\$ -	\$ -
Unaffiliated common stocks	\$ 860,113,164	\$ 860,113,164	\$ 765,078,164	\$ 95,035,000	\$ -	\$ -	\$ -
Affiliated common stocks	\$ 831,899,383	\$ 831,899,383	\$ -	\$ 831,899,383	\$ -	\$ -	\$ -
Affiliated mutual funds and ETFs	\$ 99,941,268	\$ 99,941,268	\$ -	\$ 99,941,268	\$ -	\$ -	\$ -
Mortgage loans	\$ 10,426,060,282	\$ 11,103,459,299	\$ -	\$ -	\$ 10,426,060,282	\$ -	\$ -
Real estate (held for sale)	\$ 1,455,000	\$ -	\$ -	\$ -	\$ 1,455,000	\$ -	\$ -
Cash, cash equivalents and S.T. investments	\$ 1,862,687,453	\$ 1,862,682,046	\$ 493,615,701	\$ 1,369,071,752	\$ -	\$ -	\$ -
Contract loans	\$ 1,080,408,921	\$ 1,080,408,921	\$ -	\$ -	\$ 1,080,408,921	\$ -	\$ -
Derivative assets	\$ 642,887,012	\$ 673,724,860	\$ (30,745,395)	\$ 575,039,913	\$ 98,592,494	\$ -	\$ -
Other invested assets - limited partnerships	\$ 9,114,419,425	\$ 9,099,834,671	\$ -	\$ -	\$ 9,114,419,425	\$ -	\$ -
Other invested assets - other	\$ 1,417,336,214	\$ 1,400,418,249	\$ -	\$ 71,638,862	\$ 1,345,697,351	\$ -	\$ -
Separate account assets	\$ 37,374,712,577	\$ 37,374,712,577	\$ -	\$ 37,374,712,577	\$ -	\$ -	\$ -
Liabilities:							
Deferred annuities	\$ 20,438,584,790	\$ 21,602,096,431	\$ -	\$ -	\$ 20,438,584,790	\$ -	\$ -
Other deposit contracts	\$ 3,144,851,445	\$ 3,144,851,445	\$ -	\$ 2,116,312,472	\$ 1,028,538,973	\$ -	\$ -
Derivative liabilities	\$ 61,420,463	\$ 61,967,338	\$ -	\$ 15,270,047	\$ 46,150,416	\$ -	\$ -
Separate account liabilities	\$ 37,374,712,577	\$ 37,374,712,577	\$ -	\$ 37,374,712,577	\$ -	\$ -	\$ -

D. Not Practicable to Estimate Fair Value

Thrivent has no financial instruments where it is not practicable to estimate the fair value as of March 31, 2026.

E. NAV Practical Expedient Investments

Equity limited partnerships are generally valued using NAV as a practical expedient and are included in Level 3.

NOTE 21 Other Items

No significant changes

NOTE 22 Events Subsequent

No significant changes

NOTE 23 Reinsurance

No significant changes

NOTE 24 Retrospectively Rated Contracts & Contracts Subject to Redetermination

No significant changes

NOTE 25 Change in Incurred Losses and Loss Adjustment Expenses

No significant changes

NOTE 26 Intercompany Pooling Arrangements

No significant changes

NOTE 27 Structured Settlements

No significant changes

NOTE 28 Health Care Receivables

No significant changes

NOTE 29 Participating Policies

No significant changes

NOTE 30 Premium Deficiency Reserves

No significant changes

NOTE 31 Reserves for Life Contracts and Annuity Contracts

(1 -5)No significant changes

(6) The details for other changes:

ITEM	Total	Life	ORDINARY			Individual	GROUP	
			Insurance	Annuities	Contracts		Insurance	Annuities
Adoption of GOES which impacted VM-21 res	\$ 9,835,153	\$ -	\$ -	\$ 9,835,153	\$ -	\$ -	\$ -	\$ -
Adoption of VM-22 for new Fixed Annuity issues	\$ -	\$ -	\$ -	\$ -	\$ -	\$ -	\$ -	\$ -
3106999 Total	\$ 9,835,153	\$ -	\$ -	\$ 9,835,153	\$ -	\$ -	\$ -	\$ -

NOTE 32 Analysis of Annuity Actuarial Reserves and Deposit Type Contract Liabilities by Withdrawal Characteristics

No significant changes

NOTES TO FINANCIAL STATEMENTS

NOTE 33 Analysis of Life Actuarial Reserves by Withdrawal Characteristics

No significant changes

NOTE 34 Premium & Annuity Considerations Deferred and Uncollected

No significant changes

NOTE 35 Separate Accounts

No significant changes

NOTE 36 Loss/Claim Adjustment Expenses

No significant changes

GENERAL INTERROGATORIES

PART 1 - COMMON INTERROGATORIES

GENERAL

- 1.1 Did the reporting entity experience any material transactions requiring the filing of Disclosure of Material Transactions with the State of Domicile, as required by the Model Act? Yes [] No [X]
- 1.2 If yes, has the report been filed with the domiciliary state? Yes [] No []
- 2.1 Has any change been made during the year of this statement in the charter, by-laws, articles of incorporation, or deed of settlement of the reporting entity? Yes [] No [X]
- 2.2 If yes, date of change:
- 3.1 Is the reporting entity a member of an Insurance Holding Company System consisting of two or more affiliated persons, one or more of which is an insurer? Yes [X] No []
If yes, complete Schedule Y, Parts 1 and 1A.
- 3.2 Have there been any substantial changes in the organizational chart since the prior quarter end? Yes [] No [X]
- 3.3 If the response to 3.2 is yes, provide a brief description of those changes.
.....
- 3.4 Is the reporting entity publicly traded or a member of a publicly traded group? Yes [] No [X]
- 3.5 If the response to 3.4 is yes, provide the CIK (Central Index Key) code issued by the SEC for the entity/group.
- 4.1 Has the reporting entity been a party to a merger or consolidation during the period covered by this statement? Yes [] No [X]
- 4.2 If yes, provide the name of the entity, NAIC Company Code, and state of domicile (use two letter state abbreviation) for any entity that has ceased to exist as a result of the merger or consolidation.

1	2	3
Name of Entity	NAIC Company Code	State of Domicile

5. If the reporting entity is subject to a management agreement, including third-party administrator(s), managing general agent(s), attorney-in-fact, or similar agreement, have there been any significant changes regarding the terms of the agreement or principals involved? Yes [] No [X] N/A []
If yes, attach an explanation.
.....
- 6.1 State as of what date the latest financial examination of the reporting entity was made or is being made. 12/31/2024
- 6.2 State the as of date that the latest financial examination report became available from either the state of domicile or the reporting entity. This date should be the date of the examined balance sheet and not the date the report was completed or released. 12/31/2024
- 6.3 State as of what date the latest financial examination report became available to other states or the public from either the state of domicile or the reporting entity. This is the release date or completion date of the examination report and not the date of the examination (balance sheet date). 05/11/2026
- 6.4 By what department or departments?
Wisconsin Office of the Commissioner of Insurance
- 6.5 Have all financial statement adjustments within the latest financial examination report been accounted for in a subsequent financial statement filed with Departments? Yes [] No [] N/A [X]
- 6.6 Have all of the recommendations within the latest financial examination report been complied with? Yes [] No [X] N/A []
- 7.1 Has this reporting entity had any Certificates of Authority, licenses or registrations (including corporate registration, if applicable) suspended or revoked by any governmental entity during the reporting period? Yes [] No [X]
- 7.2 If yes, give full information:
.....
- 8.1 Is the company a subsidiary of a bank holding company regulated by the Federal Reserve Board? Yes [] No [X]
- 8.2 If response to 8.1 is yes, please identify the name of the bank holding company.
.....
- 8.3 Is the company affiliated with one or more banks, thrifts or securities firms? Yes [X] No []
- 8.4 If response to 8.3 is yes, please provide below the names and location (city and state of the main office) of any affiliates regulated by a federal regulatory services agency [i.e. the Federal Reserve Board (FRB), the Office of the Comptroller of the Currency (OCC), the Federal Deposit Insurance Corporation (FDIC) and the Securities Exchange Commission (SEC)] and identify the affiliate's primary federal regulator.

1	2	3	4	5	6
Affiliate Name	Location (City, State)	FRB	OCC	FDIC	SEC
Thrivent Trust Company	Appleton, WIYES...	..YES...	
Thrivent Investment Management, Inc.	Minneapolis, MNYES...
Thrivent Financial Investor Services Inc.	Minneapolis, MNYES...
Thrivent Asset Management, LLC	Minneapolis, MNYES...
Thrivent Distributors, LLC	Minneapolis, MNYES...
Thrivent Advisor Network, LLC	Minneapolis, MNYES...
Thrivent Bank	Salt Lake City, UTYES...	
Thrivent Investment Capital Advisors, LLC	Minneapolis, MNYES...

STATEMENT AS OF MARCH 31, 2026 OF THE Thrivent Financial for Lutherans
GENERAL INTERROGATORIES

- 9.1 Are the senior officers (principal executive officer, principal financial officer, principal accounting officer or controller, or persons performing similar functions) of the reporting entity subject to a code of ethics, which includes the following standards? Yes [X] No []
 (a) Honest and ethical conduct, including the ethical handling of actual or apparent conflicts of interest between personal and professional relationships;
 (b) Full, fair, accurate, timely and understandable disclosure in the periodic reports required to be filed by the reporting entity;
 (c) Compliance with applicable governmental laws, rules and regulations;
 (d) The prompt internal reporting of violations to an appropriate person or persons identified in the code; and
 (e) Accountability for adherence to the code.
- 9.11 If the response to 9.1 is no, please explain:

- 9.2 Has the code of ethics for senior managers been amended? Yes [] No [X]
- 9.21 If the response to 9.2 is yes, provide information related to amendment(s).

- 9.3 Have any provisions of the code of ethics been waived for any of the specified officers? Yes [] No [X]
- 9.31 If the response to 9.3 is yes, provide the nature of any waiver(s).

FINANCIAL

- 10.1 Does the reporting entity report any amounts due from parent, subsidiaries or affiliates on Page 2 of this statement? Yes [X] No []
- 10.2 If yes, indicate any amounts receivable from parent included in the Page 2 amount: \$

INVESTMENT

- 11.1 Were any of the stocks, bonds, or other assets of the reporting entity loaned, placed under option agreement, or otherwise made available for use by another person? (Exclude securities under securities lending agreements.) Yes [] No [X]
- 11.2 If yes, give full and complete information relating thereto:

12. Amount of real estate and mortgages held in other invested assets in Schedule BA: \$ 1,293,491,971
- 13.1 Does the reporting entity have any investments in parent, subsidiaries and affiliates? Yes [X] No []
- 13.2 If yes, please complete the following:

	1 Prior Year-End Book/Adjusted Carrying Value	2 Current Quarter Book/Adjusted Carrying Value
13.21 Bonds	\$	\$
13.22 Preferred Stock	\$	\$
13.23 Common Stock	\$ 738,389,465	\$ 831,899,383
13.24 Short-Term Investments	\$	\$
13.25 Mortgage Loans on Real Estate	\$	\$
13.26 All Other	\$ 10,029,378,862	\$ 10,137,879,510
13.27 Total Investment in Parent, Subsidiaries and Affiliates (Subtotal Lines 13.21 to 13.26)	\$ 10,767,768,327	\$ 10,969,778,893
13.28 Total Investment in Parent included in Lines 13.21 to 13.26 above	\$	\$

- 14.1 Has the reporting entity entered into any hedging transactions reported on Schedule DB? Yes [X] No []
- 14.2 If yes, has a comprehensive description of the hedging program been made available to the domiciliary state? Yes [X] No [] N/A []
 If no, attach a description with this statement.

15. For the reporting entity's security lending program, state the amount of the following as of the current statement date:
- 15.1 Total fair value of reinvested collateral assets reported on Schedule DL, Parts 1 and 2 \$ 725,262,832
- 15.2 Total book/adjusted carrying value of reinvested collateral assets reported on Schedule DL, Parts 1 and 2 \$ 725,258,006
- 15.3 Total payable for securities lending reported on the liability page. \$ 715,640,027

STATEMENT AS OF MARCH 31, 2026 OF THE Thrivent Financial for Lutherans
GENERAL INTERROGATORIES

16. Excluding items in Schedule E - Part 3 - Special Deposits, real estate, mortgage loans and investments held physically in the reporting entity's offices, vaults or safety deposit boxes, were all stocks, bonds and other securities, owned throughout the current year held pursuant to a custodial agreement with a qualified bank or trust company in accordance with Section 1, III - General Examination Considerations, F. Outsourcing of Critical Functions, Custodial or Safekeeping Agreements of the NAIC Financial Condition Examiners Handbook? Yes [X] No []
- 16.1 For all agreements that comply with the requirements of the NAIC Financial Condition Examiners Handbook, complete the following:

1 Name of Custodian(s)	2 Custodian Address
State Street Bank	North Quincy, MA
UMB Bank	Kansas City, MO
The Bank of New York Mellon NA	Houston, TX
Thrivent Investment Capital Advisors, LLC	Minneapolis, MN

- 16.2 For all agreements that do not comply with the requirements of the NAIC Financial Condition Examiners Handbook, provide the name, location and a complete explanation:

1 Name(s)	2 Location(s)	3 Complete Explanation(s)

- 16.3 Have there been any changes, including name changes, in the custodian(s) identified in 16.1 during the current quarter? Yes [] No [X]
- 16.4 If yes, give full information relating thereto:

1 Old Custodian	2 New Custodian	3 Date of Change	4 Reason

- 16.5 Investment management – Identify all investment advisors, investment managers, broker/dealers, including individuals that have the authority to make investment decisions on behalf of the reporting entity. This includes both primary and sub-advisors. For assets that are managed internally by employees of the reporting entity, note as such. ["...that have access to the investment accounts"; "...handle securities"]

1 Name of Firm or Individual	2 Affiliation
Twin Bridge Capital Partners LLC	U.....
Thrivent Investment Capital Advisors, LLC	A.....

16.5097 For those firms/individuals listed in the table for Question 16.5, do any firms/individuals unaffiliated with the reporting entity (i.e. designated with a "U") manage more than 10% of the reporting entity's invested assets?..... Yes [] No [X] N/A []

16.5098 For firms/individuals unaffiliated with the reporting entity (i.e. designated with a "U") listed in the table for Question 16.5, does the total assets under management aggregate to more than 50% of the reporting entity's invested assets?..... Yes [] No [X] N/A []

- 16.6 For those firms or individuals listed in the table for 16.5 with an affiliation code of "A" (affiliated) or "U" (unaffiliated), provide the information for the table below.

1 Central Registration Depository Number	2 Name of Firm or Individual	3 Registered With	4 Investment Management Agreement (IMA) Filed
338378	Twin Bridge Capital Partners LLC	SEC	NO.....
160403	Thrivent Investment Capital Advisors, LLC	SEC	DS.....

- 17.1 Have all the filing requirements of the Purposes and Procedures Manual of the NAIC Investment Analysis Office been followed? Yes [X] No []

17.2 If no, list exceptions:

18. By self-designating 5GI securities, the reporting entity is certifying the following elements for each self-designated 5GI security:
- a. Documentation necessary to permit a full credit analysis of the security does not exist or an NAIC CRP credit rating for an FE or PL security is not available.
 - b. Issuer or obligor is current on all contracted interest and principal payments.
 - c. The insurer has an actual expectation of ultimate payment of all contracted interest and principal.
- Has the reporting entity self-designated 5GI securities? Yes [] No [X]

STATEMENT AS OF MARCH 31, 2026 OF THE Thrivent Financial for Lutherans
GENERAL INTERROGATORIES

19. By self-designating PLGI securities, the reporting entity is certifying its compliance with the requirements as specified in the Purposes and Procedures Manual of the NAIC Investment Analysis Office (P&P Manual) for private letter rating (PLR) securities and the following elements of each self-designated PLGI security:
- a. The security was either:
 - i. issued prior to January 1, 2018 (which is exempt from PLR filing requirements pursuant to the P&P Manual), or
 - ii. issued from January 1, 2018 to December 31, 2021 and subject to a confidentiality agreement executed prior to January 1, 2022 which confidentiality agreement remains in force, for which an insurance company cannot provide a copy of a private letter rating rationale report to the SVO due to confidentiality or other contractual reasons ("waived submission PLR securities").
 - b. The reporting entity is holding capital commensurate with the NAIC Designation and NAIC Designation Category reported for the security.
 - c. The NAIC Designation and NAIC Designation Category were derived from the credit rating assigned by an NAIC CRP in its legal capacity as a NRSRO which is shown on a current private letter rating, dated during the financial statement year, held by the insurer and available for examination by state insurance regulators.
 - d. Other than for waived submission PLR securities, defined above, on or after January 1, 2024 for any PLR securities issued on or after January 1, 2022, if the reporting entity is not permitted to share this private credit rating or the private rating letter rationale report of the PL security with the SVO, it certifies that it is reporting it as an NAIC 5.B GI and may not assign any other self-designation.
- Has the reporting entity self-designated PLGI to securities, all of which meet the above requirement and as specified in the P&P Manual? Yes [] No []
20. By assigning FE to a Schedule BA non-registered private fund, the reporting entity is certifying the following elements of each self-designated FE fund:
- a. The shares were purchased prior to January 1, 2019.
 - b. The reporting entity is holding capital commensurate with the NAIC Designation reported for the security.
 - c. The security had a public credit rating(s) with annual surveillance assigned by an NAIC CRP in its legal capacity as an NRSRO prior to January 1, 2019.
 - d. The fund only or predominantly holds bonds in its portfolio.
 - e. The current reported NAIC Designation was derived from the public credit rating(s) with annual surveillance assigned by an NAIC CRP in its legal capacity as an NRSRO.
 - f. The public credit rating(s) with annual surveillance assigned by an NAIC CRP has not lapsed.
- Has the reporting entity assigned FE to Schedule BA non-registered private funds that complied with the above criteria? Yes [] No []

GENERAL INTERROGATORIES

PART 2 - LIFE AND ACCIDENT AND HEALTH COMPANIES/FRATERNAL BENEFIT SOCIETIES

Life and Accident Health Companies/Fraternal Benefit Societies:

1. Report the statement value of mortgage loans at the end of this reporting period for the following categories: 1
Amount
- 1.1 Long-Term Mortgages In Good Standing
- 1.11 Farm Mortgages\$.....
- 1.12 Residential Mortgages\$.....
- 1.13 Commercial Mortgages\$..... 11,060,092,483
- 1.14 Total Mortgages in Good Standing\$..... 11,060,092,483
- 1.2 Long-Term Mortgages In Good Standing with Restructured Terms
- 1.21 Total Mortgages in Good Standing with Restructured Terms.....\$..... 42,475,204
- 1.3 Long-Term Mortgage Loans Upon which Interest is Overdue more than Three Months
- 1.31 Farm Mortgages\$.....
- 1.32 Residential Mortgages\$.....
- 1.33 Commercial Mortgages\$..... 891,612
- 1.34 Total Mortgages with Interest Overdue more than Three Months\$..... 891,612
- 1.4 Long-Term Mortgage Loans in Process of Foreclosure
- 1.41 Farm Mortgages\$.....
- 1.42 Residential Mortgages\$.....
- 1.43 Commercial Mortgages\$.....
- 1.44 Total Mortgages in Process of Foreclosure\$.....
- 1.5 Total Mortgage Loans (Lines 1.14 + 1.21 + 1.34 + 1.44) (Page 2, Column 3, Lines 3.1 + 3.2)\$..... 11,103,459,299
- 1.6 Long-Term Mortgages Foreclosed, Properties Transferred to Real Estate in Current Quarter
- 1.61 Farm Mortgages\$.....
- 1.62 Residential Mortgages\$.....
- 1.63 Commercial Mortgages\$.....
- 1.64 Total Mortgages Foreclosed and Transferred to Real Estate\$.....
2. Operating Percentages:
- 2.1 A&H loss percent 183.516 %
- 2.2 A&H cost containment percent 2.139 %
- 2.3 A&H expense percent excluding cost containment expenses 39.909 %
- 3.1 Do you act as a custodian for health savings accounts? Yes [] No [X]
- 3.2 If yes, please provide the amount of custodial funds held as of the reporting date\$.....
- 3.3 Do you act as an administrator for health savings accounts? Yes [] No [X]
- 3.4 If yes, please provide the balance of the funds administered as of the reporting date\$.....
4. Is the reporting entity licensed or chartered, registered, qualified, eligible or writing business in at least two states? Yes [X] No []
- 4.1 If no, does the reporting entity assume reinsurance business that covers risks residing in at least one state other than the state of domicile of the reporting entity? Yes [] No []

Fraternal Benefit Societies Only:

- 5.1 In all cases where the reporting entity has assumed accident and health risks from another company, provisions should be made in this statement on account of such reinsurances for reserve equal to that which the original company would have been required to establish had it retained the risks. Has this been done? Yes [] No [] N/A [X]
- 5.2 If no, explain:
.....
- 6.1 Does the reporting entity have outstanding assessments in the form of liens against policy benefits that have increased surplus? Yes [] No [X]
- 6.2 If yes, what is the date(s) of the original lien and the total outstanding balance of liens that remain in surplus?

Date	Outstanding Lien Amount
Total

SCHEDULE S - CEDED REINSURANCE

Showing All New Reinsurance Treaties - Current Year to Date

1 NAIC Company Code	2 ID Number	3 Effective Date	4 Name of Reinsurer	5 Domiciliary Jurisdiction	6 Type of Reinsurance Contract	7 Type of Business Ceded	8 Type of Reinsurer	9 Certified Reinsurer Rating (1 through 6)	10 Effective Date of Certified Reinsurer Rating
NONE									

STATEMENT AS OF MARCH 31, 2026 OF THE Thrivent Financial for Lutherans
SCHEDULE T - PREMIUMS AND ANNUITY CONSIDERATIONS

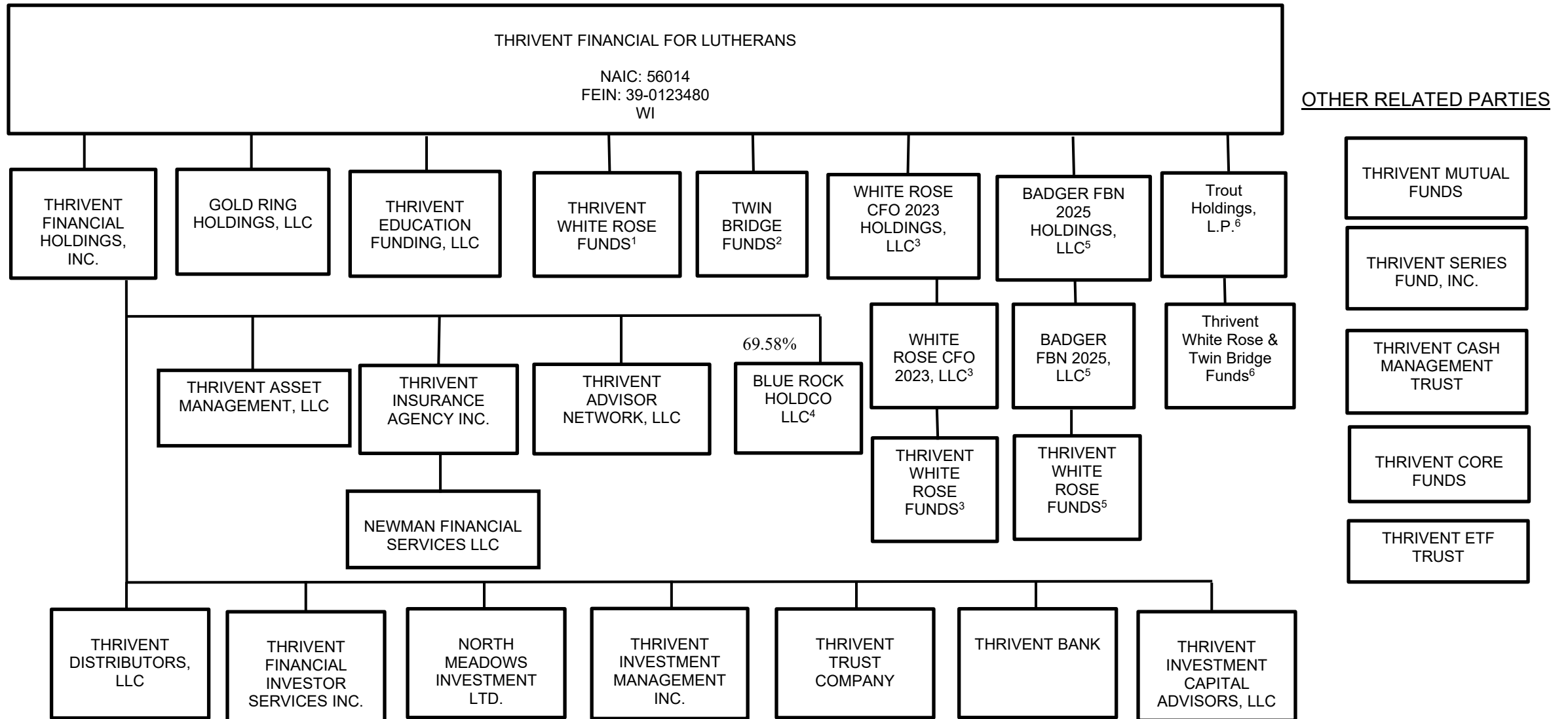
Current Year To Date - Allocated by States and Territories

States, Etc.	1	Life Contracts		Direct Business Only			
		2	3	4	5	6	7
	Active Status (a)	Life Insurance Premiums	Annuity Considerations	Accident and Health Insurance Premiums, Including Policy, Membership and Other Fees	Other Considerations	Total Columns 2 Through 5	Deposit-Type Contracts
1. Alabama	AL	L	1,132,871	2,069,846	421,665	3,624,382	
2. Alaska	AK	L	738,736	2,170,946	132,057	3,041,738	30,000
3. Arizona	AZ	L	8,407,583	18,565,603	1,440,047	28,413,233	
4. Arkansas	AR	L	2,700,410	6,182,639	321,963	9,205,012	
5. California	CA	L	19,806,495	44,646,910	3,623,345	68,076,751	2,102,789
6. Colorado	CO	L	8,348,259	13,089,520	2,441,692	23,879,471	253,958
7. Connecticut	CT	L	1,912,923	4,559,924	299,132	6,771,978	
8. Delaware	DE	L	443,019	1,485,734	140,255	2,069,009	
9. District of Columbia	DC	L	141,548	12,867	42,160	196,575	
10. Florida	FL	L	11,328,735	29,057,216	2,679,759	43,065,710	30,000
11. Georgia	GA	L	3,827,916	5,494,254	854,348	10,176,517	
12. Hawaii	HI	L	187,758	107,809	67,562	363,129	
13. Idaho	ID	L	3,401,140	10,014,009	572,386	13,987,536	
14. Illinois	IL	L	20,094,270	42,682,185	5,983,709	68,760,164	950,000,000
15. Indiana	IN	L	7,506,706	12,443,378	3,273,810	23,223,894	40,000
16. Iowa	IA	L	18,171,950	28,911,195	4,208,029	51,291,175	
17. Kansas	KS	L	6,408,616	11,242,854	2,939,500	20,590,969	
18. Kentucky	KY	L	1,429,003	2,503,501	735,083	4,667,588	
19. Louisiana	LA	L	1,023,830	2,859,248	391,485	4,274,563	
20. Maine	ME	L	263,557	864,346	80,121	1,208,023	
21. Maryland	MD	L	3,502,207	4,037,053	1,268,627	8,807,886	
22. Massachusetts	MA	L	1,445,349	1,268,327	277,590	2,991,266	
23. Michigan	MI	L	15,044,136	33,371,269	2,569,597	50,985,002	565,454
24. Minnesota	MN	L	43,867,031	94,665,603	7,780,894	146,313,528	379,886
25. Mississippi	MS	L	618,986	1,555,589	264,822	2,439,397	
26. Missouri	MO	L	12,056,578	17,968,950	2,656,344	32,681,872	240,000
27. Montana	MT	L	3,785,399	6,851,239	1,632,075	12,268,714	
28. Nebraska	NE	L	11,200,630	17,637,826	4,787,821	33,626,278	
29. Nevada	NV	L	1,630,250	3,885,693	349,000	5,864,942	
30. New Hampshire	NH	L	857,333	370,377	78,114	1,305,824	
31. New Jersey	NJ	L	3,556,078	4,507,618	560,181	8,623,877	
32. New Mexico	NM	L	637,359	251,556	153,695	1,042,609	125,000
33. New York	NY	L	6,954,080	12,638,149	254,981	19,847,209	43,375
34. North Carolina	NC	L	7,137,286	10,815,838	2,347,881	20,301,005	100,000
35. North Dakota	ND	L	10,524,496	24,304,625	2,460,288	37,289,409	193,054
36. Ohio	OH	L	15,268,916	33,677,979	3,042,003	51,988,899	50,000
37. Oklahoma	OK	L	2,112,581	4,689,589	1,157,417	7,959,586	
38. Oregon	OR	L	3,948,013	9,246,984	1,019,300	14,214,297	60,000
39. Pennsylvania	PA	L	17,261,400	41,013,567	6,152,190	64,427,156	300,000
40. Rhode Island	RI	L	217,058	341,119	71,957	630,133	
41. South Carolina	SC	L	3,557,358	2,676,003	1,014,697	7,248,058	
42. South Dakota	SD	L	10,440,352	20,244,151	2,650,414	33,334,917	19,559
43. Tennessee	TN	L	4,176,704	10,863,278	1,591,036	16,631,017	
44. Texas	TX	L	16,971,927	29,074,243	3,926,737	49,972,908	350,000
45. Utah	UT	L	815,983	1,091,422	140,103	2,047,507	
46. Vermont	VT	L	91,571	5,550	17,063	114,184	
47. Virginia	VA	L	4,002,842	5,799,325	1,382,682	11,184,849	
48. Washington	WA	L	10,966,841	27,743,994	2,433,319	41,144,154	
49. West Virginia	WV	L	421,526	3,391,485	371,892	4,184,903	
50. Wisconsin	WI	L	39,002,273	90,928,170	10,604,710	140,535,153	302,353
51. Wyoming	WY	L	1,616,331	742,331	638,508	2,997,171	
52. American Samoa	AS	N	60			60	
53. Guam	GU	N	494			494	
54. Puerto Rico	PR	N	2,538			2,538	
55. U.S. Virgin Islands	VI	N	800		144	944	
56. Northern Mariana Islands	MP	N	30			30	
57. Canada	CAN	N	740		354	1,095	
58. Aggregate other alien	OT	XXX	153,495	126,792	5,673	285,959	
59. Subtotal	XXX		371,122,355	754,749,676	94,310,216	1,220,182,246	955,185,428
90. Reporting entity contributions for employee benefits plans	XXX						
91. Dividends or refunds applied to purchase paid-up additions and annuities	XXX		88,325,241			88,325,241	
92. Dividends or refunds applied to shorten endowment or premium paying period	XXX		4,515,772	5,958		4,521,730	
93. Premium or annuity considerations waived under disability or other contract provisions	XXX		2,098,109			2,098,109	
94. Aggregate or other amounts not allocable by state	XXX						
95. Totals (direct business)	XXX		466,061,477	754,755,634	94,310,216	1,315,127,326	955,185,428
96. Plus reinsurance assumed	XXX						
97. Totals (all business)	XXX		466,061,477	754,755,634	94,310,216	1,315,127,326	955,185,428
98. Less reinsurance ceded	XXX		31,532,304		26,593,834	58,126,138	
99. Totals (all business) less reinsurance ceded	XXX		434,529,173	754,755,634	67,716,382	1,257,001,188	955,185,428
DETAILS OF WRITE-INS							
58001. Other Alien	XXX		153,495	126,792	5,673	285,959	
58002.	XXX						
58003.	XXX						
58998. Summary of remaining write-ins for Line 58 from overflow page	XXX						
58999. Totals (Lines 58001 through 58003 plus 58998)(Line 58 above)	XXX		153,495	126,792	5,673	285,959	
9401.	XXX						
9402.	XXX						
9403.	XXX						
9498. Summary of remaining write-ins for Line 94 from overflow page	XXX						
9499. Totals (Lines 9401 through 9403 plus 9498)(Line 94 above)	XXX						

(a) Active Status Counts:

- 1. L - Licensed or Chartered - Licensed insurance carrier or domiciled RRG..... 51
- 2. R - Registered - Non-domiciled RRGs.....
- 3. E - Eligible - Reporting entities eligible or approved to write surplus lines in the state.....
- 4. Q - Qualified - Qualified or accredited reinsurer.....
- 5. N - None of the above - Not allowed to write business in the state..... 6

SCHEDULE Y – INFORMATION CONCERNING ACTIVITIES OF INSURER MEMBERS OF A HOLDING COMPANY GROUP
PART 1 – ORGANIZATIONAL CHART



SCHEDULE Y – INFORMATION CONCERNING ACTIVITIES OF INSURER MEMBERS OF A HOLDING COMPANY GROUP
PART 1 – ORGANIZATIONAL CHART

THRIVENT FINANCIAL FOR LUTHERANS

NAIC: 56014
FEIN: 39-0123480
WI

1. Thrivent White Rose Funds are organized as limited partnerships, controlled by a single general partner. Each general partner is organized as a limited liability company. Here is a list of each general partner, along with the respective funds under its control:

- Thrivent White Rose GP II, LLC
 - Thrivent White Rose Fund II Fund of Funds, L.P.
- Thrivent White Rose GP III, LLC
 - Thrivent White Rose Fund III Fund of Funds, L.P.
- Thrivent White Rose GP IV, LLC
 - Thrivent White Rose Fund IV Fund of Funds, L.P.
- Thrivent White Rose GP V, LLC
 - Thrivent White Rose Fund V Fund of Funds, L.P.
- Thrivent White Rose GP VI, LLC
 - Thrivent White Rose Fund VI Fund of Funds, L.P.
- Thrivent White Rose GP VII, LLC
 - Thrivent White Rose Fund VII Equity Direct, L.P.
 - White Rose VII Equity Direct Corporation
 - Thrivent White Rose Fund VII Fund of Funds, L.P.
- Thrivent White Rose GP VIII, LLC
 - Thrivent White Rose Fund VIII Fund of Funds, L.P.
- Thrivent White Rose GP IX, LLC
 - Thrivent White Rose Fund IX Equity Direct, L.P.
 - Thrivent White Rose Fund IX Fund of Funds, L.P.
- Thrivent White Rose GP X, LLC
 - Thrivent White Rose Fund X Equity Direct, L.P.
 - White Rose X Equity Direct Corporation I
 - Thrivent White Rose Fund X Fund of Funds, L.P.
- Thrivent White Rose GP XI, LLC
 - Thrivent White Rose Fund XI Equity Direct, L.P.
 - White Rose XI Equity Direct Corporation II
 - Thrivent White Rose Fund XI Fund of Funds, L.P.
- Thrivent White Rose GP XII, LLC
 - Thrivent White Rose Fund XII Equity Direct, L.P.
 - White Rose XII Equity Direct Corporation II
 - Thrivent White Rose Fund XII Fund of Funds, L.P.

- Thrivent White Rose GP XIII, LLC
 - Thrivent White Rose Fund XIII Equity Direct, L.P.
 - Thrivent White Rose Fund XIII Fund of Funds, L.P.
- Thrivent White Rose GP XIV, LLC
 - Thrivent White Rose XIV Fund of Funds, L.P.
 - Thrivent White Rose Fund XIV Equity Direct, L.P.
- Thrivent White Rose GP XV Fund of Funds, LLC
 - Thrivent White Rose XV Fund of Funds, L.P.
 - Thrivent White Rose Feeder XV Fund of Funds, LLC
- Thrivent White Rose GP XV Equity Direct, LLC
 - Thrivent White Rose Fund XV Equity Direct, L.P.
 - White Rose XII Equity Direct Corporation I
 - Thrivent White Rose Feeder XV Equity Direct, LLC
- Thrivent White Rose GP XVI Fund of Funds, LLC
 - Thrivent White Rose Fund XVI Fund of Funds, L.P.
 - Thrivent White Rose Feeder XVI Fund of Funds, LLC
- Thrivent White Rose GP XVI Equity Direct, LLC
 - Thrivent White Rose Fund XVI Equity Direct, L.P.
 - Thrivent White Rose Feeder XVI Equity Direct, LLC
- Thrivent White Rose Real Estate GP, LLC
 - Thrivent White Rose Real Estate Fund I Fund of Funds, L.P.
- Thrivent White Rose Real Estate GP II, LLC
 - Thrivent White Rose Real Estate Fund II, L.P.
- Thrivent White Rose Real Estate GP III, LLC
 - Thrivent White Rose Real Estate Fund III, L.P.
- Thrivent White Rose Real Estate GP IV, LLC
 - Thrivent White Rose Real Estate Fund IV, L.P.
 - Thrivent White Rose Real Estate Feeder IV, LLC
- Thrivent White Rose Real Estate GP V, LLC
 - Thrivent White Rose Real Estate Fund V, L.P.
 - Thrivent White Rose Real Estate Feeder V, LLC
- Thrivent White Rose Real Estate GP VI, LLC
 - Thrivent White Rose Real Estate Fund VI, L.P.
 - Thrivent White Rose Real Estate Feeder VI, LLC

- Thrivent White Rose Endurance GP, LLC
 - Thrivent White Rose Endurance Fund, L.P.
- Thrivent White Rose Endurance GP II, LLC
 - Thrivent White Rose Endurance Fund II, L.P.
- Thrivent White Rose Endurance GP III, LLC
 - Thrivent White Rose Endurance Fund III, L.P.
 - Thrivent White Rose Endurance Feeder III, LLC
- Thrivent White Rose Endurance GP IV, LLC
 - Thrivent White Rose Endurance Fund IV, L.P.
 - Thrivent White Rose Endurance Feeder IV, LLC
- Thrivent White Rose Private Credit GP I, LLC
 - Thrivent White Rose Private Credit Fund I Structured Note L.P.
 - Thrivent White Rose Private Credit Fund I L.P.

Thrivent White Rose Opportunity Fund is organized as a limited partnership, controlled by a single general partner. The general partner is organized as a limited liability company. The Thrivent White Rose Opportunity Fund is wholly owned by Thrivent Financial for Lutherans which acts as investment manager to the Fund.

- Thrivent White Rose Opportunity Fund, GP, LLC
 - Thrivent White Rose Opportunity Fund, L.P.

SCHEDULE Y – INFORMATION CONCERNING ACTIVITIES OF INSURER MEMBERS OF A HOLDING COMPANY GROUP
PART 1 – ORGANIZATIONAL CHART

THRIVENT FINANCIAL FOR LUTHERANS

NAIC: 56014
FEIN: 39-0123480
WI

2. The Pacific Street, Narrow Gate, and Titan Funds are organized as limited partnerships, each controlled by a single general partner. Each general partner is a limited liability company or limited partnership that is managed and controlled by the Management Company Twin Bridge Capital Partners, LLC. Here is a list of each general partner, along with the respective funds under its control:

- Pacific Street GP, LLC
 - Pacific Street Fund, L.P.
- Pacific Street GP II, LLC
 - Pacific Street Fund II, L.P.
- Pacific Street GP III, LLC
 - Pacific Street Fund III, L.P.
- Pacific Street GP IV, LLC
 - Pacific Street Fund IV, L.P.

The following Twin Bridge Funds are organized as limited partnerships, each controlled by a single general partner and managed by its investment manager Twin Bridge Capital Partners LLC. Each general partner is a limited liability company or limited partnership that is managed and controlled by the Management Company Twin Bridge Capital Partners, LLC. Each ultimate general partner is managed and controlled by a board of managers. Here is a list of each ultimate general partner, general partner, and the respective funds under its control:

- Pacific Street UGP V, LLC
 - Pacific Street GP V, L.P.
 - Pacific Street Fund V, L.P.
- Pacific Street UGP VI, LLC
 - Pacific Street GP VI, L.P.
 - Pacific Street Fund VI, L.P.
- Twin Bridge Narrow Gate UGP, LLC
 - Twin Bridge Narrow Gate GP, L.P.
 - Twin Bridge Narrow Gate Fund, L.P.
- Twin Bridge Narrow Gate UGP II, LLC
 - Twin Bridge Narrow Gate GP II, L.P.
 - Twin Bridge Narrow Gate Fund II, L.P.
- Twin Bridge Titan UGP, LLC
 - Twin Bridge Titan GP, L.P.
 - Twin Bridge Titan Fund, L.P.
- Twin Bridge Amplify UGP, LLC
 - Twin Bridge Amplify GP, L.P.
 - Twin Bridge Amplify Fund, L.P.

SCHEDULE Y – INFORMATION CONCERNING ACTIVITIES OF INSURER MEMBERS OF A HOLDING COMPANY GROUP
PART 1 – ORGANIZATIONAL CHART

3. White Rose CFO 2023, LLC is wholly owned by White Rose CFO 2023 Holdings, LLC and holds a partial interest in the Thrivent White Rose Funds listed below:

- Thrivent White Rose Fund VIII Fund of Funds, L.P.
- Thrivent White Rose Fund IX Fund of Funds, L.P.
- Thrivent White Rose Fund X Fund of Funds, L.P.
- Thrivent White Rose Fund XI Fund of Funds, L.P.
- Thrivent White Rose Fund XII Fund of Funds, L.P.

5. BADGER FBN 2025, LLC is wholly owned by BADGER FBN 2025 Holdings, LLC and holds a partial interest in the Thrivent White Rose Funds listed below:

- Thrivent White Rose Fund VIII Fund of Funds, L.P.
- Thrivent White Rose Fund IX Fund of Funds, L.P.
- Thrivent White Rose Fund X Fund of Funds, L.P.
- Thrivent White Rose Fund XI Fund of Funds, L.P.
- Thrivent White Rose Fund XII Fund of Funds, L.P.
- Thrivent White Rose Fund XIII Fund of Funds, L.P.

4. The following Blue Rock Holdco LLC holdings are organized as LLCs under the umbrella of Blue Rock Holdco LLC:

- **Castle Lending Enterprises, LLC**
 - College Avenue Student Loans, LLC
 - College Ave Student Loan Servicing, LLC
 - TLC 193LLC
 - Museum Finance, LLC
 - College Ave Administrator, LLC
 - College Ave Depositor, LLC
 - College Ave Holdings 2019-A, LLC
 - College Ave Residual Holdings, LLC

6. Trout Holdings, L.P. is organized as a limited partnership with a single general partner, Trout Holdings GP, LLC. Trout Holdings GP, LLC is a limited liability company that is managed and controlled by Thrivent. Trout Holdings, LP holds a partial interest in the Thrivent White Rose Funds and Twin Bridge Funds listed below:

- Thrivent White Rose Fund XII Equity Direct, L.P.
- Thrivent White Rose Fund XIII Equity Direct, L.P.
- Thrivent White Rose Fund XIV Equity Direct, L.P.
- Thrivent White Rose Fund XV Equity Direct, L.P.
- Thrivent White Rose Fund XVI Equity Direct, L.P.
- Pacific Street Fund III, L.P.
- Pacific Street Fund IV, L.P.
- Pacific Street Fund V, L.P.
- Pacific Street Fund VI, L.P.

STATEMENT AS OF MARCH 31, 2026 OF THE Thrivent Financial for Lutherans

SCHEDULE Y

PART 1A - DETAILS OF INSURANCE HOLDING COMPANY SYSTEM

1	2	3	4	5	6	7	8	9	10	11	12	13	14	15	16
Group Code	Group Name	NAIC Company Code	ID Number	Federal RSSD	CIK	Name of Securities Exchange if Publicly Traded (U.S. or International)	Names of Parent, Subsidiaries Or Affiliates	Domi-ciliary Location	Relation-ship to Reporting Entity	Directly Controlled by (Name of Entity/Person)	Type of Control (Ownership, Board, Management, Attorney-in-Fact, Influence, Other)	If Control is Ownership Provide Percentage	Ultimate Controlling Entity(ies)/Person(s)	Is an SCA Filing Re-quired? (Yes/No)	*
.0000	Thrivent Financial for Lutherans	56014	39-0123480		314984		Thrivent Financial for Lutherans	WI	RE	Thrivent Financial for Lutherans				NO	
	Thrivent Financial for Lutherans		46-2037515				Gold Ring Holdings, LLC	DE	DS	Thrivent Financial for Lutherans	Ownership	100.000	Thrivent Financial for Lutherans	NO	
	Thrivent Financial for Lutherans		81-1538357				Thrivent Education Funding, LLC	DE	DS	Thrivent Financial for Lutherans	Ownership	100.000	Thrivent Financial for Lutherans	NO	
	Thrivent Financial for Lutherans		93-2714012				White Rose CFO 2023 Holdings, LLC	DE	DS	Thrivent Financial for Lutherans	Ownership	100.000	Thrivent Financial for Lutherans	NO	
	Thrivent Financial for Lutherans		93-2712025				White Rose CFO 2023, LLC	DE	DS	White Rose CFO 2023 Holdings, LLC	Ownership	100.000	Thrivent Financial for Lutherans	NO	
	Thrivent Financial for Lutherans		47-2565241		1628506		Thrivent White Rose Fund VIII Fund of Funds, L.P.	DE	NIA	White Rose CFO 2023, LLC	Ownership	49.797	Thrivent Financial for Lutherans	NO	
	Thrivent Financial for Lutherans		81-0725894		1663385		Thrivent White Rose Fund IX Fund of Funds, L.P.	DE	NIA	White Rose CFO 2023, LLC	Ownership	48.518	Thrivent Financial for Lutherans	NO	
	Thrivent Financial for Lutherans		81-4560711		1694687		Thrivent White Rose Fund X Fund of Funds, L.P.	DE	NIA	White Rose CFO 2023, LLC	Ownership	33.121	Thrivent Financial for Lutherans	NO	
	Thrivent Financial for Lutherans		82-2480104		1725653		Thrivent White Rose Fund XI Fund of Funds, L.P.	DE	NIA	White Rose CFO 2023, LLC	Ownership	29.278	Thrivent Financial for Lutherans	NO	
	Thrivent Financial for Lutherans		83-2416952		1762652		Thrivent White Rose Fund XII Fund of Funds, L.P.	DE	NIA	White Rose CFO 2023, LLC	Ownership	28.754	Thrivent Financial for Lutherans	NO	
	Thrivent Financial for Lutherans		33-3573453				Badger FBN 2025 Holdings, LLC	DE	DS	Thrivent Financial for Lutherans	Ownership	100.000	Thrivent Financial for Lutherans	NO	
	Thrivent Financial for Lutherans		33-3584729				Badger FBN 2025, LLC	DE	DS	Badger FBN 2025 Holdings, LLC	Ownership	100.000	Thrivent Financial for Lutherans	NO	
	Thrivent Financial for Lutherans		47-2565241		1628506		Thrivent White Rose Fund VIII Fund of Funds, L.P.	DE	NIA	Badger FBN 2025, LLC	Ownership	49.883	Thrivent Financial for Lutherans	NO	
	Thrivent Financial for Lutherans		81-0725894		1663385		Thrivent White Rose Fund IX Fund of Funds, L.P.	DE	NIA	Badger FBN 2025, LLC	Ownership	51.363	Thrivent Financial for Lutherans	NO	
	Thrivent Financial for Lutherans		81-4560711		1694687		Thrivent White Rose Fund X Fund of Funds, L.P.	DE	NIA	Badger FBN 2025, LLC	Ownership	66.760	Thrivent Financial for Lutherans	NO	
	Thrivent Financial for Lutherans		82-2480104		1725653		Thrivent White Rose Fund XI Fund of Funds, L.P.	DE	NIA	Badger FBN 2025, LLC	Ownership	25.026	Thrivent Financial for Lutherans	NO	
	Thrivent Financial for Lutherans		83-2416952		1762652		Thrivent White Rose Fund XII Fund of Funds, L.P.	DE	NIA	Badger FBN 2025, LLC	Ownership	37.513	Thrivent Financial for Lutherans	NO	
	Thrivent Financial for Lutherans		47-2565241		1628506		Thrivent White Rose Fund XIII Fund of Funds, L.P.	DE	NIA	Badger FBN 2025, LLC	Ownership	45.329	Thrivent Financial for Lutherans	NO	
	Thrivent Financial for Lutherans		39-3980289				Trout Holdings, GP LLC	DE	NIA	Thrivent Financial for Lutherans	Ownership	100.000	Thrivent Financial for Lutherans	NO	
	Thrivent Financial for Lutherans		39-3980289				Trout Holdings, GP LLC	DE	NIA	Thrivent Financial for Lutherans	BOARD		Thrivent Financial for Lutherans	NO	
	Thrivent Financial for Lutherans		39-3979380				Trout Holdings, L.P.	DE	NIA	Trout Holdings, GP LLC	Management		Thrivent Financial for Lutherans	NO	
	Thrivent Financial for Lutherans		39-3979380				Trout Holdings, L.P.	DE	NIA	Thrivent Financial for Lutherans	Ownership	29.200	Thrivent Financial for Lutherans	NO	
	Thrivent Financial for Lutherans		83-2390402		1762650		Thrivent White Rose Fund XII Equity Direct, L.P.	DE	NIA	Trout Holdings, L.P.	Ownership	57.179	Thrivent Financial for Lutherans	NO	
	Thrivent Financial for Lutherans		84-3221659		1796081		Thrivent White Rose Fund XIII Equity Direct, L.P.	DE	NIA	Trout Holdings, L.P.	Ownership	98.582	Thrivent Financial for Lutherans	NO	
	Thrivent Financial for Lutherans		85-3788164		1842213		Thrivent White Rose Fund XIV Equity Direct, L.P.	DE	NIA	Trout Holdings, L.P.	Ownership	29.025	Thrivent Financial for Lutherans	NO	
	Thrivent Financial for Lutherans		92-0674141				Thrivent White Rose Fund XV Equity Direct, L.P.	DE	NIA	Trout Holdings, L.P.	Ownership	45.712	Thrivent Financial for Lutherans	NO	
	Thrivent Financial for Lutherans		39-3888884				Thrivent White Rose Fund XVI Equity Direct, L.P.	DE	NIA	Trout Holdings, L.P.	Ownership	47.992	Thrivent Financial for Lutherans	NO	
	Thrivent Financial for Lutherans		46-2898885		1599480		Pacific Street Fund III, L.P.	DE	NIA	Trout Holdings, L.P.	Ownership	35.170	Thrivent Financial for Lutherans	NO	
	Thrivent Financial for Lutherans		38-4021051		1694331		Pacific Street Fund IV, L.P.	DE	NIA	Trout Holdings, L.P.	Ownership	22.510	Thrivent Financial for Lutherans	NO	
	Thrivent Financial for Lutherans		85-2235884		1819884		Pacific Street Fund V, L.P.	DE	NIA	Trout Holdings, L.P.	Ownership	27.950	Thrivent Financial for Lutherans	NO	
	Thrivent Financial for Lutherans		93-4461914		0002001624		Pacific Street Fund VI, L.P.	DE	NIA	Trout Holdings, L.P.	Ownership	14.600	Thrivent Financial for Lutherans	NO	
	Thrivent Financial for Lutherans		39-1559369				Thrivent Financial Holdings, Inc.	DE	DS	Thrivent Financial for Lutherans	Ownership	100.000	Thrivent Financial for Lutherans	YES	
	Thrivent Financial for Lutherans		26-2521785		1346952		Thrivent Asset Management, LLC	DE	DS	Thrivent Financial Holdings Inc.	Ownership	100.000	Thrivent Financial for Lutherans	YES	
	Thrivent Financial for Lutherans		41-1780150				Thrivent Insurance Agency Inc.	IN	DS	Thrivent Financial Holdings Inc.	Ownership	100.000	Thrivent Financial for Lutherans	NO	
	Thrivent Financial for Lutherans		41-1902733				Newman Financial Services LLC	IN	DS	Thrivent Insurance Agency Inc.	Ownership	100.000	Thrivent Financial for Lutherans	NO	
	Thrivent Financial for Lutherans		83-4623913		1843730		Thrivent Advisor Network, LLC	DE	DS	Thrivent Financial Holdings Inc.	Ownership	100.000	Thrivent Financial for Lutherans	YES	

STATEMENT AS OF MARCH 31, 2026 OF THE Thrivent Financial for Lutherans

SCHEDULE Y

PART 1A - DETAILS OF INSURANCE HOLDING COMPANY SYSTEM

1	2	3	4	5	6	7	8	9	10	11	12	13	14	15	16
Group Code	Group Name	NAIC Company Code	ID Number	Federal RSSD	CIK	Name of Securities Exchange if Publicly Traded (U.S. or International)	Names of Parent, Subsidiaries Or Affiliates	Domiciliary Location	Relationship to Reporting Entity	Directly Controlled by (Name of Entity/Person)	Type of Control (Ownership, Board, Management, Attorney-in-Fact, Influence, Other)	If Control is Ownership Provide Percentage	Ultimate Controlling Entity(ies)/Person(s)	Is an SCA Filing Required? (Yes/No)	*
	Thrivent Financial for Lutherans		47-3199809				Thrivent Distributors, LLC	DE	DS	Thrivent Financial Holdings Inc.	Ownership	100.000	Thrivent Financial for Lutherans	YES	
	Thrivent Financial for Lutherans		39-1932303	2745529	1083097		Thrivent Trust Company	WI	DS	Thrivent Financial Holdings Inc.	Ownership	100.000	Thrivent Financial for Lutherans	YES	
	Thrivent Financial for Lutherans		39-1534368				North Meadows Investment Ltd.	WI	DS	Thrivent Financial Holdings Inc.	Ownership	100.000	Thrivent Financial for Lutherans	NO	
	Thrivent Financial for Lutherans		39-1559375				Thrivent Investment Management Inc.	DE	DS	Thrivent Financial Holdings Inc.	Ownership	100.000	Thrivent Financial for Lutherans	NO	
	Thrivent Financial for Lutherans		25-1200088		817712		Thrivent Financial Investor Services Inc.	PA	DS	Thrivent Financial Holdings Inc.	Ownership	100.000	Thrivent Financial for Lutherans	YES	
	Thrivent Financial for Lutherans		33-2407750				Thrivent Bank	UT	DS	Thrivent Financial Holdings Inc.	Ownership	100.000	Thrivent Financial for Lutherans	YES	
	Thrivent Financial for Lutherans		39-3717338				Thrivent Investment Capital Advisors, LLC	DE	DS	Thrivent Financial Holdings Inc.	Ownership	100.000	Thrivent Financial for Lutherans	YES	
	Thrivent Financial for Lutherans		88-2102702				Blue Rock HOLDCO LLC	DE	DS	Thrivent Financial Holdings Inc.	Ownership	69.580	Thrivent Financial for Lutherans	YES	
	Thrivent Financial for Lutherans		83-3633979				Castle Lending Enterprises, LLC	DE	NIA	Blue Rock HOLDCO LLC	Ownership	100.000	Thrivent Financial for Lutherans	NO	
	Thrivent Financial for Lutherans		47-1566746		1664943		College Avenue Student Loans, LLC	DE	NIA	Castle Lending Enterprises, LLC	Ownership	100.000	Thrivent Financial for Lutherans	NO	
	Thrivent Financial for Lutherans		38-4040614				College Ave Administrator, LLC	DE	NIA	College Avenue Student Loans, LLC	Ownership	100.000	Thrivent Financial for Lutherans	NO	
	Thrivent Financial for Lutherans		37-1862253				College Ave Depositor, LLC	DE	NIA	College Avenue Student Loans, LLC	Ownership	100.000	Thrivent Financial for Lutherans	NO	
	Thrivent Financial for Lutherans		84-1926754				College Ave Holdings 2019-A, LLC	DE	NIA	College Avenue Student Loans, LLC	Ownership	20.000	Thrivent Financial for Lutherans	NO	
	Thrivent Financial for Lutherans		92-3915420				College Ave Residual Holdings, LLC	DE	NIA	College Avenue Student Loans, LLC	Ownership	100.000	Thrivent Financial for Lutherans	NO	
	Thrivent Financial for Lutherans		47-2299032				College Ave Student Loan Servicing, LLC	DE	NIA	College Avenue Student Loans, LLC	Ownership	100.000	Thrivent Financial for Lutherans	NO	
	Thrivent Financial for Lutherans		99-4362062				TLC 193LLC	DE	NIA	College Ave Student Loan Servicing, LLC	Ownership	100.000	Thrivent Financial for Lutherans	NO	
	Thrivent Financial for Lutherans		83-3633039				Museum Finance, LLC	DE	NIA	College Ave Student Loan Servicing, LLC	Ownership	100.000	Thrivent Financial for Lutherans	NO	
	Thrivent Financial for Lutherans		51-0659063				Thrivent White Rose GP II, LLC	DE	NIA	Thrivent Financial for Lutherans	Ownership	77.500	Thrivent Financial for Lutherans	NO	
	Thrivent Financial for Lutherans		51-0659149		1425623		Thrivent White Rose Fund II Fund of Funds, L.P.	DE	NIA	Thrivent White Rose GP II, LLC	Ownership	99.831	Thrivent Financial for Lutherans	NO	
	Thrivent Financial for Lutherans		51-0659149		1425623		Thrivent White Rose Fund II Fund of Funds, L.P.	DE	NIA	Thrivent Financial for Lutherans	Management		Thrivent Financial for Lutherans	NO	
	Thrivent Financial for Lutherans		26-3900402				Thrivent White Rose GP III, LLC	DE	NIA	Thrivent Financial for Lutherans	Ownership	77.500	Thrivent Financial for Lutherans	NO	
	Thrivent Financial for Lutherans		26-3900624		1459015		Thrivent White Rose Fund III Fund of Funds, L.P.	DE	NIA	Thrivent White Rose GP III, LLC	Ownership	99.815	Thrivent Financial for Lutherans	NO	
	Thrivent Financial for Lutherans		26-3900624		1459015		Thrivent White Rose Fund III Fund of Funds, L.P.	DE	NIA	Thrivent Financial for Lutherans	Management		Thrivent Financial for Lutherans	NO	
	Thrivent Financial for Lutherans		27-4524712				Thrivent White Rose GP IV, LLC	DE	NIA	Thrivent Financial for Lutherans	Ownership	75.500	Thrivent Financial for Lutherans	NO	
	Thrivent Financial for Lutherans		27-4527676		1510200		Thrivent White Rose Fund IV Fund of Funds, L.P.	DE	NIA	Thrivent White Rose GP IV, LLC	Ownership	99.828	Thrivent Financial for Lutherans	NO	
	Thrivent Financial for Lutherans		27-4527676		1510200		Thrivent White Rose Fund IV Fund of Funds, L.P.	DE	NIA	Thrivent Financial for Lutherans	Management		Thrivent Financial for Lutherans	NO	
	Thrivent Financial for Lutherans		33-4719776				Thrivent White Rose GP V, LLC	DE	NIA	Thrivent Financial for Lutherans	Ownership	74.750	Thrivent Financial for Lutherans	NO	
	Thrivent Financial for Lutherans		30-0712736		1539341		Thrivent White Rose Fund V Fund of Funds, L.P.	DE	NIA	Thrivent White Rose GP V, LLC	Ownership	99.820	Thrivent Financial for Lutherans	NO	
	Thrivent Financial for Lutherans		30-0712736		1539341		Thrivent White Rose Fund V Fund of Funds, L.P.	DE	NIA	Thrivent Financial for Lutherans	Management		Thrivent Financial for Lutherans	NO	
	Thrivent Financial for Lutherans		46-1753069				Thrivent White Rose GP VI, LLC	DE	NIA	Thrivent Financial for Lutherans	Ownership	48.000	Thrivent Financial for Lutherans	NO	
	Thrivent Financial for Lutherans		80-0884297		1567185		Thrivent White Rose Fund VI Fund of Funds, L.P.	DE	NIA	Thrivent White Rose GP VI, LLC	Ownership	99.867	Thrivent Financial for Lutherans	NO	
	Thrivent Financial for Lutherans		80-0884297		1567185		Thrivent White Rose Fund VI Fund of Funds, L.P.	DE	NIA	Thrivent Financial for Lutherans	Management		Thrivent Financial for Lutherans	NO	
	Thrivent Financial for Lutherans		46-4441354				Thrivent White Rose GP VII, LLC	DE	NIA	Thrivent Financial for Lutherans	Ownership	48.000	Thrivent Financial for Lutherans	NO	
	Thrivent Financial for Lutherans		46-4500965		1604036		Thrivent White Rose Fund VII Equity Direct, L.P.	DE	NIA	Thrivent White Rose GP VII, LLC	Ownership	98.856	Thrivent Financial for Lutherans	NO	
	Thrivent Financial for Lutherans		46-4500965		1604036		Thrivent White Rose Fund VII Equity Direct, L.P.	DE	NIA	Thrivent Financial for Lutherans	Management		Thrivent Financial for Lutherans	NO	
	Thrivent Financial for Lutherans		47-2591235				White Rose VII Equity Direct Corporation	DE	NIA	Thrivent White Rose Fund VII Equity Direct, L.P.	Ownership	100.000	Thrivent Financial for Lutherans	NO	

STATEMENT AS OF MARCH 31, 2026 OF THE Thrivent Financial for Lutherans

SCHEDULE Y

PART 1A - DETAILS OF INSURANCE HOLDING COMPANY SYSTEM

1	2	3	4	5	6	7	8	9	10	11	12	13	14	15	16
Group Code	Group Name	NAIC Company Code	ID Number	Federal RSSD	CIK	Name of Securities Exchange if Publicly Traded (U.S. or International)	Names of Parent, Subsidiaries Or Affiliates	Domiciliary Location	Relationship to Reporting Entity	Directly Controlled by (Name of Entity/Person)	Type of Control (Ownership, Board, Management, Attorney-in-Fact, Influence, Other)	If Control is Ownership Provide Percentage	Ultimate Controlling Entity(ies)/Person(s)	Is an SCA Filing Required? (Yes/No)	*
.....	Thrivent Financial for Lutherans	46-4489978	1604035	Thrivent White Rose Fund VII Fund of Funds, L.P.DE.....NIA.....	Thrivent White Rose GP VII, LLC	Ownership.....	..99.831	Thrivent Financial for LutheransNO.....
.....	Thrivent Financial for Lutherans	46-4489978	1604035	Thrivent White Rose Fund VII Fund of Funds, L.P.DE.....NIA.....	Thrivent Financial for Lutherans	Management.....	Thrivent Financial for LutheransNO.....
.....	Thrivent Financial for Lutherans	47-2561356	1636128	Thrivent White Rose GP VIII, LLCDE.....NIA.....	Thrivent Financial for Lutherans	Ownership.....	..25.000	Thrivent Financial for LutheransNO.....
.....	Thrivent Financial for Lutherans	47-2565241	1628506	Thrivent White Rose Fund VIII Fund of Funds, L.P.DE.....NIA.....	Thrivent White Rose GP VIII, LLC	Ownership.....	..0.000	Thrivent Financial for LutheransNO.....
.....	Thrivent Financial for Lutherans	47-2565241	1628506	Thrivent White Rose Fund VIII Fund of Funds, L.P.DE.....NIA.....	Thrivent Financial for Lutherans	Management.....	Thrivent Financial for LutheransNO.....
.....	Thrivent Financial for Lutherans	81-0705471	1663440	Thrivent White Rose GP IX, LLCDE.....NIA.....	Thrivent Financial for Lutherans	Ownership.....	..37.000	Thrivent Financial for LutheransNO.....
.....	Thrivent Financial for Lutherans	81-0709375	1663375	Thrivent White Rose Fund IX Equity Direct, L.P.DE.....NIA.....	Thrivent White Rose GP IX, LLC	Ownership.....	..98.620	Thrivent Financial for LutheransNO.....
.....	Thrivent Financial for Lutherans	81-0709375	1663375	Thrivent White Rose Fund IX Equity Direct, L.P.DE.....NIA.....	Thrivent Financial for Lutherans	Management.....	Thrivent Financial for LutheransNO.....
.....	Thrivent Financial for Lutherans	81-0725894	1663385	Thrivent White Rose Fund IX Fund of Funds, L.P.DE.....NIA.....	Thrivent White Rose GP IX, LLC	Ownership.....	..0.000	Thrivent Financial for LutheransNO.....
.....	Thrivent Financial for Lutherans	81-0725894	1663385	Thrivent White Rose Fund IX Fund of Funds, L.P.DE.....NIA.....	Thrivent Financial for Lutherans	Management.....	Thrivent Financial for LutheransNO.....
.....	Thrivent Financial for Lutherans	81-4594296	1694503	Thrivent White Rose GP X, LLCDE.....NIA.....	Thrivent Financial for Lutherans	Ownership.....	..34.000	Thrivent Financial for LutheransNO.....
.....	Thrivent Financial for Lutherans	81-4575314	1694529	Thrivent White Rose Fund X Equity Direct, L.P.DE.....NIA.....	Thrivent White Rose GP X, LLC	Ownership.....	..98.296	Thrivent Financial for LutheransNO.....
.....	Thrivent Financial for Lutherans	81-4575314	1694529	Thrivent White Rose Fund X Equity Direct, L.P.DE.....NIA.....	Thrivent Financial for Lutherans	Management.....	Thrivent Financial for LutheransNO.....
.....	Thrivent Financial for Lutherans	82-1102840	White Rose X Equity Direct Corporation IDE.....NIA.....	Thrivent White Rose Fund X Equity Direct, L.P.	Ownership.....	..100.000	Thrivent Financial for LutheransNO.....
.....	Thrivent Financial for Lutherans	81-4560711	1694687	Thrivent White Rose Fund X Fund of Funds, L.P.DE.....NIA.....	Thrivent White Rose GP X, LLC	Ownership.....	..0.000	Thrivent Financial for LutheransNO.....
.....	Thrivent Financial for Lutherans	81-4560711	1694687	Thrivent White Rose Fund X Fund of Funds, L.P.DE.....NIA.....	Thrivent Financial for Lutherans	Management.....	Thrivent Financial for LutheransNO.....
.....	Thrivent Financial for Lutherans	82-2450674	1725636	Thrivent White Rose GP XI, LLCDE.....NIA.....	Thrivent Financial for Lutherans	Ownership.....	..17.500	Thrivent Financial for LutheransNO.....
.....	Thrivent Financial for Lutherans	82-2466553	1725642	Thrivent White Rose Fund XI Equity Direct, L.P.DE.....NIA.....	Thrivent White Rose GP XI, LLC	Ownership.....	..98.582	Thrivent Financial for LutheransNO.....
.....	Thrivent Financial for Lutherans	82-2466553	1725642	Thrivent White Rose Fund XI Equity Direct, L.P.DE.....NIA.....	Thrivent Financial for Lutherans	Management.....	Thrivent Financial for LutheransNO.....
.....	Thrivent Financial for Lutherans	82-2994923	White Rose XI Equity Direct Corporation IIDE.....NIA.....	Thrivent White Rose Fund XI Equity Direct, L.P.	Ownership.....	..100.000	Thrivent Financial for LutheransNO.....
.....	Thrivent Financial for Lutherans	82-2480104	1725653	Thrivent White Rose Fund XI Fund of Funds, L.P.DE.....NIA.....	Thrivent White Rose GP XI, LLC	Ownership.....	..45.567	Thrivent Financial for LutheransNO.....
.....	Thrivent Financial for Lutherans	82-2480104	1725653	Thrivent White Rose Fund XI Fund of Funds, L.P.DE.....NIA.....	Thrivent Financial for Lutherans	Management.....	Thrivent Financial for LutheransNO.....
.....	Thrivent Financial for Lutherans	83-2400794	1762651	Thrivent White Rose GP XII, LLCDE.....NIA.....	Thrivent Financial for Lutherans	Ownership.....	..25.000	Thrivent Financial for LutheransNO.....
.....	Thrivent Financial for Lutherans	83-2390402	1762650	Thrivent White Rose Fund XII Equity Direct, L.P.DE.....NIA.....	Thrivent White Rose GP XII, LLC	Ownership.....	..41.933	Thrivent Financial for LutheransNO.....
.....	Thrivent Financial for Lutherans	83-2390402	1762650	Thrivent White Rose Fund XII Equity Direct, L.P.DE.....NIA.....	Thrivent Financial for Lutherans	Management.....	Thrivent Financial for LutheransNO.....
.....	Thrivent Financial for Lutherans	83-2417427	White Rose XII Equity Direct Corporation IIDE.....NIA.....	Thrivent White Rose Fund XII Equity Direct, L.P.	Ownership.....	..100.000	Thrivent Financial for LutheransNO.....
.....	Thrivent Financial for Lutherans	83-2416952	1762652	Thrivent White Rose Fund XII Fund of Funds, L.P.DE.....NIA.....	Thrivent White Rose GP XII, LLC	Ownership.....	..33.651	Thrivent Financial for LutheransNO.....
.....	Thrivent Financial for Lutherans	83-2416952	1762652	Thrivent White Rose Fund XII Fund of Funds, L.P.DE.....NIA.....	Thrivent Financial for Lutherans	Management.....	Thrivent Financial for LutheransNO.....
.....	Thrivent Financial for Lutherans	84-3221131	1796069	Thrivent White Rose GP XIII, LLCDE.....NIA.....	Thrivent Financial for Lutherans	Ownership.....	..15.000	Thrivent Financial for LutheransNO.....

STATEMENT AS OF MARCH 31, 2026 OF THE Thrivent Financial for Lutherans

SCHEDULE Y

PART 1A - DETAILS OF INSURANCE HOLDING COMPANY SYSTEM

1	2	3	4	5	6	7	8	9	10	11	12	13	14	15	16
Group Code	Group Name	NAIC Company Code	ID Number	Federal RSSD	CIK	Name of Securities Exchange if Publicly Traded (U.S. or International)	Names of Parent, Subsidiaries Or Affiliates	Domiciliary Location	Relationship to Reporting Entity	Directly Controlled by (Name of Entity/Person)	Type of Control (Ownership, Board, Management, Attorney-in-Fact, Influence, Other)	If Control is Ownership Provide Percentage	Ultimate Controlling Entity(ies)/Person(s)	Is an SCA Filing Required? (Yes/No)	*
.....	Thrivent Financial for Lutherans	84-3221659	1796081	Thrivent White Rose Fund XIII Equity Direct, L.P.DE.....NIA.....	Thrivent White Rose GP XIII, LLC	Ownership.....	..0.010	Thrivent Financial for LutheransNO.....
.....	Thrivent Financial for Lutherans	84-3221659	1796081	Thrivent White Rose Fund XIII Equity Direct, L.P.DE.....NIA.....	Thrivent Financial for Lutherans	Management.....	Thrivent Financial for LutheransNO.....
.....	Thrivent Financial for Lutherans	84-3221508	1796074	Thrivent White Rose Fund XIII Fund of Funds, L.P.DE.....NIA.....	Thrivent White Rose GP XIII, LLC	Ownership.....	..54.604	Thrivent Financial for LutheransNO.....
.....	Thrivent Financial for Lutherans	84-3221508	1796074	Thrivent White Rose Fund XIII Fund of Funds, L.P.DE.....NIA.....	Thrivent Financial for Lutherans	Management.....	Thrivent Financial for LutheransNO.....
.....	Thrivent Financial for Lutherans	85-3787811	1842184	Thrivent White Rose GP XIV, LLCDE.....NIA.....	Thrivent Financial for Lutherans	Ownership.....	..11.500	Thrivent Financial for LutheransNO.....
.....	Thrivent Financial for Lutherans	85-3788164	1842213	Thrivent White Rose Fund XIV Equity Direct, L.P.DE.....NIA.....	Thrivent White Rose GP XIV, LLC	Ownership.....	..70.162	Thrivent Financial for LutheransNO.....
.....	Thrivent Financial for Lutherans	85-3788164	1842213	Thrivent White Rose Fund XIV Equity Direct, L.P.DE.....NIA.....	Thrivent Financial for Lutherans	Management.....	Thrivent Financial for LutheransNO.....
.....	Thrivent Financial for Lutherans	85-3788330	1842211	Thrivent White Rose Fund XIV Fund of Funds, L.P.DE.....NIA.....	Thrivent White Rose GP XIV, LLC	Ownership.....	..99.918	Thrivent Financial for LutheransNO.....
.....	Thrivent Financial for Lutherans	85-3788330	1842211	Thrivent White Rose Fund XIV Fund of Funds, L.P.DE.....NIA.....	Thrivent Financial for Lutherans	Management.....	Thrivent Financial for LutheransNO.....
.....	Thrivent Financial for Lutherans	88-4186952	Thrivent White Rose GP XV Equity Direct, LLCDE.....NIA.....	Thrivent Financial for Lutherans	Management.....	Thrivent Financial for LutheransNO.....
.....	Thrivent Financial for Lutherans	92-0674141	Thrivent White Rose Fund XV Equity Direct, L.P.DE.....NIA.....	Thrivent White Rose GP XV Equity Direct, LLC	Ownership.....	..53.399	Thrivent Financial for LutheransNO.....
.....	Thrivent Financial for Lutherans	92-0674141	Thrivent White Rose Fund XV Equity Direct, L.P.DE.....NIA.....	Thrivent Financial for Lutherans	Management.....	Thrivent Financial for LutheransNO.....
.....	Thrivent Financial for Lutherans	83-2406385	White Rose XII Equity Direct Corporation IDE.....NIA.....	Thrivent White Rose Fund XV Equity Direct, L.P.	Ownership.....	..100.000	Thrivent Financial for LutheransNO.....
.....	Thrivent Financial for Lutherans	92-0675838	1955656	Thrivent White Rose Feeder XV Equity Direct, LLCDE.....NIA.....	Thrivent Financial for Lutherans	Management.....	Thrivent Financial for LutheransNO.....
.....	Thrivent Financial for Lutherans	92-0688865	Thrivent White Rose GP XV Fund of Funds, LLCDE.....NIA.....	Thrivent Financial for Lutherans	Management.....	Thrivent Financial for LutheransNO.....
.....	Thrivent Financial for Lutherans	88-4180781	Thrivent White Rose Fund XV Fund of Funds, L.P.DE.....NIA.....	Thrivent White Rose GP XV Fund of Funds, LLC	Ownership.....	..99.790	Thrivent Financial for LutheransNO.....
.....	Thrivent Financial for Lutherans	88-4180781	Thrivent White Rose Fund XV Fund of Funds, L.P.DE.....NIA.....	Thrivent Financial for Lutherans	Management.....	Thrivent Financial for LutheransNO.....
.....	Thrivent Financial for Lutherans	92-0675812	1955657	Thrivent White Rose Feeder XV Fund of Funds, LLCDE.....NIA.....	Thrivent Financial for Lutherans	Management.....	Thrivent Financial for LutheransNO.....
.....	Thrivent Financial for Lutherans	39-3898999	Thrivent White Rose GP XVI Fund of Funds, LLCDE.....NIA.....	Thrivent Financial for Lutherans	Management.....	Thrivent Financial for LutheransNO.....
.....	Thrivent Financial for Lutherans	39-3894986	Thrivent White Rose Fund XVI Fund of Funds, L.P.DE.....NIA.....	Thrivent White Rose GP XVI Fund of Funds, LLC	Ownership.....	..99.925	Thrivent Financial for LutheransNO.....
.....	Thrivent Financial for Lutherans	39-3894986	Thrivent White Rose Fund XVI Fund of Funds, L.P.DE.....NIA.....	Thrivent Financial for Lutherans	Management.....	Thrivent Financial for LutheransNO.....
.....	Thrivent Financial for Lutherans	36-5156807	Thrivent White Rose Feeder XVI Fund of Funds, LLCDE.....NIA.....	Thrivent Financial for Lutherans	Management.....	Thrivent Financial for LutheransNO.....
.....	Thrivent Financial for Lutherans	39-3896810	Thrivent White Rose GP XVI Equity Direct, LLCDE.....NIA.....	Thrivent Financial for Lutherans	Management.....	Thrivent Financial for LutheransNO.....
.....	Thrivent Financial for Lutherans	39-3888884	Thrivent White Rose Fund XVI Equity Direct, L.P.DE.....NIA.....	Thrivent White Rose GP XVI Equity Direct, LLC	Ownership.....	..51.191	Thrivent Financial for LutheransNO.....
.....	Thrivent Financial for Lutherans	39-3888884	Thrivent White Rose Fund XVI Equity Direct, L.P.DE.....NIA.....	Thrivent Financial for Lutherans	Management.....	Thrivent Financial for LutheransNO.....
.....	Thrivent Financial for Lutherans	39-3922406	Thrivent White Rose Feeder XVI Equity Direct, LLCDE.....NIA.....	Thrivent Financial for Lutherans	Management.....	Thrivent Financial for LutheransNO.....
.....	Thrivent Financial for Lutherans	81-5349309	1704197	Thrivent White Rose Real Estate GP, LLCDE.....NIA.....	Thrivent Financial for Lutherans	Ownership.....	..40.000	Thrivent Financial for LutheransNO.....

STATEMENT AS OF MARCH 31, 2026 OF THE Thrivent Financial for Lutherans

SCHEDULE Y

PART 1A - DETAILS OF INSURANCE HOLDING COMPANY SYSTEM

1	2	3	4	5	6	7	8	9	10	11	12	13	14	15	16
Group Code	Group Name	NAIC Company Code	ID Number	Federal RSSD	CIK	Name of Securities Exchange if Publicly Traded (U.S. or International)	Names of Parent, Subsidiaries Or Affiliates	Domiciliary Location	Relationship to Reporting Entity	Directly Controlled by (Name of Entity/Person)	Type of Control (Ownership, Board, Management, Attorney-in-Fact, Influence, Other)	If Control is Ownership Provide Percentage	Ultimate Controlling Entity(ies)/Person(s)	Is an SCA Filing Required? (Yes/No)	*
.....	Thrivent Financial for Lutherans	81-5359083	1704260	Thrivent White Rose Real Estate Fund I Fund of Funds, L.P.DE.....NIA.....	Thrivent White Rose Real Estate GP, LLC ...	Ownership.....	..99.140	Thrivent Financial for LutheransNO.....
.....	Thrivent Financial for Lutherans	81-5359083	1704260	Thrivent White Rose Real Estate Fund I Fund of Funds, L.P.DE.....NIA.....	Thrivent Financial for Lutherans	Management.....	Thrivent Financial for LutheransNO.....
.....	Thrivent Financial for Lutherans	82-5313543	1746548	Thrivent White Rose Real Estate GP II, LLCDE.....NIA.....	Thrivent Financial for Lutherans	Ownership.....	..23.000	Thrivent Financial for LutheransNO.....
.....	Thrivent Financial for Lutherans	82-5330642	1746549	Thrivent White Rose Real Estate Fund II, L.P.DE.....NIA.....	Thrivent White Rose Real Estate GP II, LLC ..	Ownership.....	..99.683	Thrivent Financial for LutheransNO.....
.....	Thrivent Financial for Lutherans	82-5330642	1746549	Thrivent White Rose Real Estate Fund II, L.P.DE.....NIA.....	Thrivent Financial for Lutherans	Management.....	Thrivent Financial for LutheransNO.....
.....	Thrivent Financial for Lutherans	84-5082161	1814862	Thrivent White Rose Real Estate GP III, LLCDE.....NIA.....	Thrivent Financial for Lutherans	Ownership.....	..19.000	Thrivent Financial for LutheransNO.....
.....	Thrivent Financial for Lutherans	84-5082750	1814860	Thrivent White Rose Real Estate Fund III, L.P.DE.....NIA.....	Thrivent White Rose Real Estate GP III, LLC ..	Ownership.....	..99.900	Thrivent Financial for LutheransNO.....
.....	Thrivent Financial for Lutherans	84-5082750	1814860	Thrivent White Rose Real Estate Fund III, L.P.DE.....NIA.....	Thrivent Financial for Lutherans	Management.....	Thrivent Financial for LutheransNO.....
.....	Thrivent Financial for Lutherans	87-2021182	Thrivent White Rose Real Estate GP IV, LLCDE.....NIA.....	Thrivent Financial for Lutherans	Management.....	Thrivent Financial for LutheransNO.....
.....	Thrivent Financial for Lutherans	87-2021182	Thrivent White Rose Real Estate Fund IV, L.P.DE.....NIA.....	Thrivent White Rose Real Estate GP IV, LLC ..	Ownership.....	..99.893	Thrivent Financial for LutheransNO.....
.....	Thrivent Financial for Lutherans	87-2004196	Thrivent White Rose Real Estate Fund IV, L.P.DE.....NIA.....	Thrivent Financial for Lutherans	Management.....	Thrivent Financial for LutheransNO.....
.....	Thrivent Financial for Lutherans	87-2004196	Thrivent White Rose Real Estate Feeder IV, LLCDE.....NIA.....	Thrivent Financial for Lutherans	Management.....	Thrivent Financial for LutheransNO.....
.....	Thrivent Financial for Lutherans	87-3773384	1901508	Thrivent White Rose Real Estate GP V, LLCDE.....NIA.....	Thrivent Financial for Lutherans	Management.....	Thrivent Financial for LutheransNO.....
.....	Thrivent Financial for Lutherans	92-2233693	Thrivent White Rose Real Estate Fund V, L.P.DE.....NIA.....	Thrivent Financial for Lutherans	Management.....	Thrivent Financial for LutheransNO.....
.....	Thrivent Financial for Lutherans	92-2233852	Thrivent White Rose Real Estate Fund V, L.P.DE.....NIA.....	Thrivent White Rose Real Estate GP V, LLC ..	Ownership.....	..99.885	Thrivent Financial for LutheransNO.....
.....	Thrivent Financial for Lutherans	92-2233852	Thrivent White Rose Real Estate Fund V, L.P.DE.....NIA.....	Thrivent Financial for Lutherans	Management.....	Thrivent Financial for LutheransNO.....
.....	Thrivent Financial for Lutherans	92-2233878	Thrivent White Rose Real Estate Feeder V, LLCDE.....NIA.....	Thrivent Financial for Lutherans	Management.....	Thrivent Financial for LutheransNO.....
.....	Thrivent Financial for Lutherans	39-4034469	Thrivent White Rose Real Estate GP VI, LLCDE.....NIA.....	Thrivent Financial for Lutherans	Management.....	Thrivent Financial for LutheransNO.....
.....	Thrivent Financial for Lutherans	39-3949884	Thrivent White Rose Real Estate Fund, VI L.P.DE.....NIA.....	Thrivent White Rose Real Estate GP VI, LLC ..	Ownership.....	..99.939	Thrivent Financial for LutheransNO.....
.....	Thrivent Financial for Lutherans	39-3949884	Thrivent White Rose Real Estate Fund, VI L.P.DE.....NIA.....	Thrivent Financial for Lutherans	Management.....	Thrivent Financial for LutheransNO.....
.....	Thrivent Financial for Lutherans	39-4008209	Thrivent White Rose Real Estate Feeder VI, LLCDE.....NIA.....	Thrivent Financial for Lutherans	Management.....	Thrivent Financial for LutheransNO.....
.....	Thrivent Financial for Lutherans	82-4705847	Thrivent White Rose Opportunity Fund GP, LLCDE.....NIA.....	Thrivent Financial for Lutherans	Ownership.....	..100.000	Thrivent Financial for LutheransNO.....
.....	Thrivent Financial for Lutherans	82-4680577	Thrivent White Rose Opportunity Fund, LPDE.....NIA.....	Thrivent White Rose Opportunity Fund GP, LLC ..	Ownership.....	..100.000	Thrivent Financial for LutheransNO.....
.....	Thrivent Financial for Lutherans	82-4680577	Thrivent White Rose Opportunity Fund, LPDE.....NIA.....	Thrivent Financial for Lutherans	Management.....	Thrivent Financial for LutheransNO.....
.....	Thrivent Financial for Lutherans	84-3220945	1794379	Thrivent White Rose Endurance GP, LLCDE.....NIA.....	Thrivent Financial for Lutherans	Ownership.....	..15.000	Thrivent Financial for LutheransNO.....
.....	Thrivent Financial for Lutherans	84-3221314	1794413	Thrivent White Rose Endurance Fund, L.P.DE.....NIA.....	Thrivent White Rose Endurance GP, LLC	Ownership.....	..99.732	Thrivent Financial for LutheransNO.....
.....	Thrivent Financial for Lutherans	84-3221314	1794413	Thrivent White Rose Endurance Fund, L.P.DE.....NIA.....	Thrivent Financial for Lutherans	Management.....	Thrivent Financial for LutheransNO.....
.....	Thrivent Financial for Lutherans	85-3788841	1841664	Thrivent White Rose Endurance GP II, LLCDE.....NIA.....	Thrivent Financial for Lutherans	Ownership.....	..11.500	Thrivent Financial for LutheransNO.....
.....	Thrivent Financial for Lutherans	85-3788977	1842237	Thrivent White Rose Endurance Fund II, L.P.DE.....NIA.....	Thrivent White Rose Endurance GP II, LLC	Ownership.....	..99.906	Thrivent Financial for LutheransNO.....
.....	Thrivent Financial for Lutherans	85-3788977	1842237	Thrivent White Rose Endurance Fund II, L.P.DE.....NIA.....	Thrivent Financial for Lutherans	Management.....	Thrivent Financial for LutheransNO.....
.....	Thrivent Financial for Lutherans	92-0690396	Thrivent White Rose Endurance GP III, LLCDE.....NIA.....	Thrivent Financial for Lutherans	Management.....	Thrivent Financial for LutheransNO.....
.....	Thrivent Financial for Lutherans	88-4180790	Thrivent White Rose Endurance Fund III, L.P.DE.....NIA.....	Thrivent White Rose Endurance GP III, LLC	Ownership.....	..99.846	Thrivent Financial for LutheransNO.....

STATEMENT AS OF MARCH 31, 2026 OF THE Thrivent Financial for Lutherans

SCHEDULE Y
PART 1A - DETAILS OF INSURANCE HOLDING COMPANY SYSTEM

1	2	3	4	5	6	7	8	9	10	11	12	13	14	15	16
Group Code	Group Name	NAIC Company Code	ID Number	Federal RSSD	CIK	Name of Securities Exchange if Publicly Traded (U.S. or International)	Names of Parent, Subsidiaries Or Affiliates	Domiciliary Location	Relationship to Reporting Entity	Directly Controlled by (Name of Entity/Person)	Type of Control (Ownership, Board, Management, Attorney-in-Fact, Influence, Other)	If Control is Ownership Provide Percentage	Ultimate Controlling Entity(ies)/Person(s)	Is an SCA Filing Required? (Yes/No)	*
.....	Thrivent Financial for Lutherans	88-4180790	Thrivent White Rose Endurance Fund III, L.P.	..DE.....NIA.....	Thrivent Financial for Lutherans	Management.....	Thrivent Financial for Lutherans	...NO.....
.....	Thrivent Financial for Lutherans	92-0693370	1955683	Thrivent White Rose Endurance Feeder III, LLC	..DE.....NIA.....	Thrivent Financial for Lutherans	Management.....	Thrivent Financial for Lutherans	...NO.....
.....	Thrivent Financial for Lutherans	37-2197451	Thrivent White Rose Endurance GP IV, LLC	..DE.....NIA.....	Thrivent Financial for Lutherans	Management.....	Thrivent Financial for Lutherans	...NO.....
.....	Thrivent Financial for Lutherans	39-3915442	Thrivent White Rose Endurance Fund IV, L.P.	..DE.....NIA.....	Thrivent White Rose Endurance GP IV, LLC	Ownership.....	..99.880	Thrivent Financial for Lutherans	...NO.....
.....	Thrivent Financial for Lutherans	39-3915442	Thrivent White Rose Endurance Fund IV, L.P.	..DE.....NIA.....	Thrivent Financial for Lutherans	Management.....	Thrivent Financial for Lutherans	...NO.....
.....	Thrivent Financial for Lutherans	39-4007413	Thrivent White Rose Endurance Feeder IV, LLC	..DE.....NIA.....	Thrivent Financial for Lutherans	Management.....	Thrivent Financial for Lutherans	...NO.....
.....	Thrivent Financial for Lutherans	41-5102114	Thrivent White Rose Private Credit GP I, LLC	..DE.....NIA.....	Thrivent Financial for Lutherans	Management.....	Thrivent Financial for Lutherans	...NO.....
.....	Thrivent Financial for Lutherans	41-5101443	Thrivent White Rose Private Credit Fund I Structured Note L.P.	..DE.....NIA.....	Thrivent White Rose Private Credit GP I, LLC	Ownership.....	..100.000	Thrivent Financial for Lutherans	...NO.....
.....	Thrivent Financial for Lutherans	41-5101443	Thrivent White Rose Private Credit Fund I Structured Note L.P.	..DE.....NIA.....	Thrivent Financial for Lutherans	Management.....	Thrivent Financial for Lutherans	...NO.....
.....	Thrivent Financial for Lutherans	41-5100560	Thrivent White Rose Private Credit Fund I L.P.	..DE.....NIA.....	Thrivent White Rose Private Credit GP I, LLC	Ownership.....	Thrivent Financial for Lutherans	...NO.....
.....	Thrivent Financial for Lutherans	41-5100560	Thrivent White Rose Private Credit Fund I L.P.	..DE.....NIA.....	Thrivent Financial for Lutherans	Management.....	Thrivent Financial for Lutherans	...NO.....
.....	Thrivent Financial for Lutherans	02-0755424	Pacific Street Fund, L.P.	..DE.....NIA.....	Pacific Street GP, LLC	Management.....	Thrivent Financial for Lutherans	...NO.....	1
.....	Thrivent Financial for Lutherans	02-0755424	Pacific Street Fund, L.P.	..DE.....NIA.....	Thrivent Financial for Lutherans	Ownership.....	..99.595	Thrivent Financial for Lutherans	...NO.....	1
.....	Thrivent Financial for Lutherans	02-0755417	Pacific Street GP, LLC	..DE.....NIA.....	Twin Bridge Capital Partners LLC	Management.....	Thrivent Financial for Lutherans	...NO.....	1
.....	Thrivent Financial for Lutherans	94-3436464	1444779	Pacific Street Fund II, L.P.	..DE.....NIA.....	Pacific Street GP II, LLC	Management.....	Thrivent Financial for Lutherans	...NO.....	1
.....	Thrivent Financial for Lutherans	94-3436464	1444779	Pacific Street Fund II, L.P.	..DE.....NIA.....	Thrivent Financial for Lutherans	Ownership.....	..99.476	Thrivent Financial for Lutherans	...NO.....	1
.....	Thrivent Financial for Lutherans	94-3436461	Pacific Street GP II, LLC	..DE.....NIA.....	Twin Bridge Capital Partners LLC	Management.....	Thrivent Financial for Lutherans	...NO.....	1
.....	Thrivent Financial for Lutherans	46-2898885	1599480	Pacific Street Fund III, L.P.	..DE.....NIA.....	Pacific Street GP III, LLC	Management.....	Thrivent Financial for Lutherans	...NO.....	1
.....	Thrivent Financial for Lutherans	46-2898885	1599480	Pacific Street Fund III, L.P.	..DE.....NIA.....	Thrivent Financial for Lutherans	Ownership.....	..64.227	Thrivent Financial for Lutherans	...NO.....	1
.....	Thrivent Financial for Lutherans	30-0785505	Pacific Street GP III, LLC	..DE.....NIA.....	Twin Bridge Capital Partners LLC	Management.....	Thrivent Financial for Lutherans	...NO.....	1
.....	Thrivent Financial for Lutherans	38-4021051	1694331	Pacific Street Fund IV, L.P.	..DE.....NIA.....	Pacific Street GP IV, LLC	Management.....	Thrivent Financial for Lutherans	...NO.....	1
.....	Thrivent Financial for Lutherans	38-4021051	1694331	Pacific Street Fund IV, L.P.	..DE.....NIA.....	Thrivent Financial for Lutherans	Ownership.....	..67.414	Thrivent Financial for Lutherans	...NO.....	1
.....	Thrivent Financial for Lutherans	81-4631592	Pacific Street GP IV, LLC	..DE.....NIA.....	Twin Bridge Capital Partners LLC	Management.....	Thrivent Financial for Lutherans	...NO.....	1
.....	Thrivent Financial for Lutherans	85-2235884	1819884	Pacific Street Fund V, L.P.	..DE.....NIA.....	Pacific Street GP V, L.P.	Management.....	Thrivent Financial for Lutherans	...NO.....	1
.....	Thrivent Financial for Lutherans	85-2235884	1819884	Pacific Street Fund V, L.P.	..DE.....NIA.....	Thrivent Financial for Lutherans	Ownership.....	..51.545	Thrivent Financial for Lutherans	...NO.....	1
.....	Thrivent Financial for Lutherans	85-2247703	Pacific Street GP V, L.P.	..DE.....NIA.....	Pacific Street UGP V, LLC	Management.....	Thrivent Financial for Lutherans	...NO.....	1
.....	Thrivent Financial for Lutherans	85-2271673	Pacific Street UGP V, LLC	..DE.....NIA.....	Twin Bridge Capital Partners LLC	Management.....	Thrivent Financial for Lutherans	...NO.....	1
.....	Thrivent Financial for Lutherans	85-2271673	Pacific Street UGP V, LLC	..DE.....NIA.....	Thrivent Financial for Lutherans	BOARD.....	Thrivent Financial for Lutherans	...NO.....	1
.....	Thrivent Financial for Lutherans	93-4461914	0002001624	Pacific Street Fund VI, L.P.	..DE.....NIA.....	Pacific Street GP VI, L.P.	Management.....	Thrivent Financial for Lutherans	...NO.....	1
.....	Thrivent Financial for Lutherans	93-4461914	0002001624	Pacific Street Fund VI, L.P.	..DE.....NIA.....	Thrivent Financial for Lutherans	Ownership.....	..69.097	Thrivent Financial for Lutherans	...NO.....	1
.....	Thrivent Financial for Lutherans	93-4507625	Pacific Street GP VI, L.P.	..DE.....NIA.....	Pacific Street UGP VI, LLC	Management.....	Thrivent Financial for Lutherans	...NO.....	1
.....	Thrivent Financial for Lutherans	93-4532626	Pacific Street UGP VI, LLC	..DE.....NIA.....	Twin Bridge Capital Partners LLC	Management.....	Thrivent Financial for Lutherans	...NO.....	1
.....	Thrivent Financial for Lutherans	93-4532626	Pacific Street UGP VI, LLC	..DE.....NIA.....	Thrivent Financial for Lutherans	BOARD.....	Thrivent Financial for Lutherans	...NO.....	1
.....	Thrivent Financial for Lutherans	92-1829178	Twin Bridge Narrow Gate Fund II, L.P.	..DE.....NIA.....	Twin Bridge Narrow Gate GP, L.P.	Management.....	Thrivent Financial for Lutherans	...NO.....	1
.....	Thrivent Financial for Lutherans	92-1829178	Twin Bridge Narrow Gate Fund II, L.P.	..DE.....NIA.....	Thrivent Financial for Lutherans	Ownership.....	..57.177	Thrivent Financial for Lutherans	...NO.....	1
.....	Thrivent Financial for Lutherans	92-1805721	Twin Bridge Narrow Gate GP II, L.P.	..DE.....NIA.....	Twin Bridge Narrow Gate UGP, LLC	Management.....	Thrivent Financial for Lutherans	...NO.....	1
.....	Thrivent Financial for Lutherans	92-1790948	Twin Bridge Narrow Gate UGP II, LLC	..DE.....NIA.....	Twin Bridge Capital Partners LLC	Management.....	Thrivent Financial for Lutherans	...NO.....	1
.....	Thrivent Financial for Lutherans	92-1790948	Twin Bridge Narrow Gate UGP II, LLC	..DE.....NIA.....	Thrivent Financial for Lutherans	BOARD.....	Thrivent Financial for Lutherans	...NO.....	1
.....	Thrivent Financial for Lutherans	84-1828756	1779013	Twin Bridge Narrow Gate Fund, L.P.	..DE.....NIA.....	Twin Bridge Narrow Gate GP, L.P.	Management.....	Thrivent Financial for Lutherans	...NO.....	1
.....	Thrivent Financial for Lutherans	84-1828756	1779013	Twin Bridge Narrow Gate Fund, L.P.	..DE.....NIA.....	Thrivent Financial for Lutherans	Ownership.....	..79.523	Thrivent Financial for Lutherans	...NO.....	1
.....	Thrivent Financial for Lutherans	84-1852082	Twin Bridge Narrow Gate GP, L.P.	..DE.....NIA.....	Twin Bridge Narrow Gate UGP, LLC	Management.....	Thrivent Financial for Lutherans	...NO.....	1
.....	Thrivent Financial for Lutherans	84-1860310	Twin Bridge Narrow Gate UGP, LLC	..DE.....NIA.....	Twin Bridge Capital Partners LLC	Management.....	Thrivent Financial for Lutherans	...NO.....	1

STATEMENT AS OF MARCH 31, 2026 OF THE Thrivent Financial for Lutherans

SCHEDULE Y
PART 1A - DETAILS OF INSURANCE HOLDING COMPANY SYSTEM

1	2	3	4	5	6	7	8	9	10	11	12	13	14	15	16
Group Code	Group Name	NAIC Company Code	ID Number	Federal RSSD	CIK	Name of Securities Exchange if Publicly Traded (U.S. or International)	Names of Parent, Subsidiaries Or Affiliates	Domiciliary Location	Relationship to Reporting Entity	Directly Controlled by (Name of Entity/Person)	Type of Control (Ownership, Board, Management, Attorney-in-Fact, Influence, Other)	If Control is Ownership Provide Percentage	Ultimate Controlling Entity(ies)/Person(s)	Is an SCA Filing Required? (Yes/No)	*
.....	Thrivent Financial for Lutherans	84-1860310	Twin Bridge Narrow Gate UGP, LLCDE.....NIA.....	Thrivent Financial for Lutherans	BOARD	Thrivent Financial for LutheransNO.....1.....
.....	Thrivent Financial for Lutherans	86-3549248	1866900	Twin Bridge Titan Fund, L.P.DE.....NIA.....	Twin Bridge Titan GP, L.P.	Management.....	Thrivent Financial for LutheransNO.....1.....
.....	Thrivent Financial for Lutherans	86-3549248	1866900	Twin Bridge Titan Fund, L.P.DE.....NIA.....	Thrivent Financial for Lutherans	Ownership.....	..69.097 ..	Thrivent Financial for LutheransNO.....1.....
.....	Thrivent Financial for Lutherans	86-3580166	Twin Bridge Titan GP, L.P.DE.....NIA.....	Twin Bridge Titan UGP, LLC	Management.....	Thrivent Financial for LutheransNO.....1.....
.....	Thrivent Financial for Lutherans	86-3638711	Twin Bridge Titan UGP, LLCDE.....NIA.....	Twin Bridge Capital Partners LLC	Management.....	Thrivent Financial for LutheransNO.....1.....
.....	Thrivent Financial for Lutherans	86-3638711	Twin Bridge Titan UGP, LLCDE.....NIA.....	Thrivent Financial for Lutherans	BOARD	Thrivent Financial for LutheransNO.....1.....
.....	Thrivent Financial for Lutherans	41-2975640	Twin Bridge Amplify Fund, L.P.DE.....NIA.....	Twin Bridge Titan GP, L.P.	Management.....	Thrivent Financial for LutheransNO.....1.....
.....	Thrivent Financial for Lutherans	41-2975640	Twin Bridge Amplify Fund, L.P.DE.....NIA.....	Thrivent Financial for Lutherans	Ownership.....	..96.727 ..	Thrivent Financial for LutheransNO.....1.....
.....	Thrivent Financial for Lutherans	41-3129237	Twin Bridge Amplify GP, L.P.DE.....NIA.....	Twin Bridge Titan UGP, LLC	Management.....	Thrivent Financial for LutheransNO.....1.....
.....	Thrivent Financial for Lutherans	41-3153019	Twin Bridge Amplify UGP, LLCDE.....NIA.....	Twin Bridge Capital Partners LLC	Management.....	Thrivent Financial for LutheransNO.....1.....
.....	Thrivent Financial for Lutherans	41-3153019	Twin Bridge Amplify UGP, LLCDE.....NIA.....	Thrivent Financial for Lutherans	BOARD	Thrivent Financial for LutheransNO.....1.....
.....	Thrivent Financial for Lutherans	02-0755407	Twin Bridge Capital Partners, LLCDE.....NIA.....	Thrivent Financial for Lutherans	BOARD	Thrivent Financial for LutheransNO.....1.....
.....	Thrivent Financial for Lutherans	02-0755407	Twin Bridge Capital Partners, LLCDE.....NIA.....	Thrivent Financial for Lutherans	Ownership.....	..49.000 ..	Thrivent Financial for LutheransNO.....1.....
.....	Thrivent Financial for Lutherans	45-5527495	811869	Thrivent Mutual FundsMA.....OTH.....	Thrivent Financial for Lutherans	Management.....	Thrivent Financial for LutheransNO.....2.....
.....	Thrivent Financial for Lutherans	46-0990187	790166	Thrivent Series Fund, Inc.MN.....OTH.....	Thrivent Financial for Lutherans	Management.....	Thrivent Financial for LutheransNO.....2.....
.....	Thrivent Financial for Lutherans	81-4583060	1669626	Thrivent Core FundsDE.....OTH.....	Thrivent Financial for Lutherans	Management.....	Thrivent Financial for LutheransNO.....2.....
.....	Thrivent Financial for Lutherans	20-1467561	1300087	Thrivent Cash Management TrustDE.....OTH.....	Thrivent Financial for Lutherans	Management.....	Thrivent Financial for LutheransNO.....2.....
.....	Thrivent Financial for Lutherans	88-1392971	1896670	Thrivent ETF TrustMA.....OTH.....	Thrivent Financial for Lutherans	Management.....	Thrivent Financial for LutheransNO.....2.....

Asterisk	Explanation
1	Thrivent Financial for Lutherans owns 49% of Twin Bridge Capital Partners LLC; however, Twin Bridge Capital Partners LLC, which is owned 51% by other partners, has ultimate control and decision making over the funds and GPs identified in Schedule Y-Part 1.
2	Thrivent and its' affiliates provide services and manage this mutual fund

SUPPLEMENTAL EXHIBITS AND SCHEDULES INTERROGATORIES

The following supplemental reports are required to be filed as part of your statement filing. However, in the event that your company does not transact the type of business for which the special report must be filed, your response of NO to the specific interrogatory will be accepted in lieu of filing a "NONE" report and a bar code will be printed below. If the supplement is required of your company but is not being filed for whatever reason enter SEE EXPLANATION and provide an explanation following the interrogatory questions.

	Response
1. Will the Trusteed Surplus Statement be filed with the state of domicile and the NAIC with this statement?	NO
2. Will the Medicare Part D Coverage Supplement be filed with the state of domicile and the NAIC with this statement?	NO
3. Will the Reasonableness of Assumptions Certification required by Actuarial Guideline XXXV be filed with the state of domicile and electronically with the NAIC?	NO
4. Will the Reasonableness and Consistency of Assumptions Certification required by Actuarial Guideline XXXV be filed with the state of domicile and electronically with the NAIC?	YES
5. Will the Reasonableness of Assumptions Certification for Implied Guaranteed Rate Method required by Actuarial Guideline XXXVI be filed with the state of domicile and electronically with the NAIC?	NO
6. Will the Reasonableness and Consistency of Assumptions Certification required by Actuarial Guideline XXXVI (Updated Average Market Value) be filed with the state of domicile and electronically with the NAIC?	NO
7. Will the Reasonableness and Consistency of Assumptions Certification required by Actuarial Guideline XXXVI (Updated Market Value) be filed with the state of domicile and electronically with the NAIC?	NO
8. Will the Life PBR Statement of Exemption be filed with the state of domicile by July 1st and electronically with the NAIC with the second quarterly filing per the Valuation Manual (by August 15)? (2nd Quarter Only) The response for 1st and 3rd quarters should be N/A. A NO response resulting with a bar code is only appropriate in the 2nd quarter. In the case of an ongoing statement of exemption, enter "SEE EXPLANATION" and provide as an explanation that the company is utilizing an ongoing statement of exemption.	N/A

AUGUST FILING

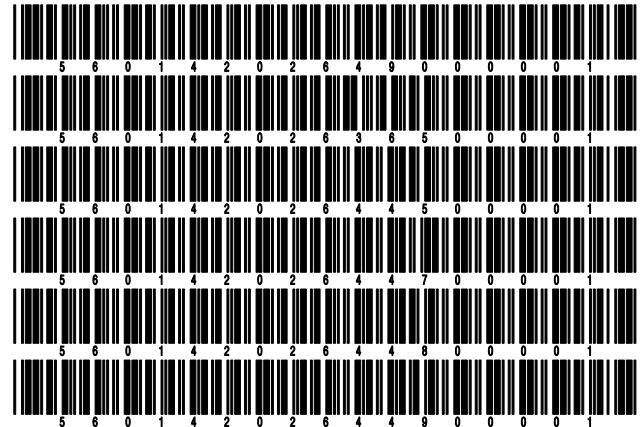
9. Will the regulator-only (non-public) Communication of Internal Control Related Matters Noted in Audit be filed with the state of domicile and electronically with the NAIC (as a regulator-only non-public document) by August 1? The response for 1st and 3rd quarters should be N/A. A NO response resulting with a bar code is only appropriate in the 2nd quarter.	N/A
--	-----

Explanation:

- 1.
- 2.
- 3.
- 5.
- 6.
- 7.

Bar Code:

1. Trusteed Surplus Statement [Document Identifier 490]
2. Medicare Part D Coverage Supplement [Document Identifier 365]
3. Reasonableness of Assumptions Certification required by Actuarial Guideline XXXV [Document Identifier 445]
5. Reasonableness of Assumptions Certification for Implied Guaranteed Rate Method required by Actuarial Guideline XXXVI [Document Identifier 447]
6. Reasonableness and Consistency of Assumptions Certification required by Actuarial Guideline XXXVI [Document Identifier 448]
7. Reasonableness and Consistency of Assumptions Certification required by Actuarial Guideline XXXVI (Updated Market Value) [Document Identifier 449]



OVERFLOW PAGE FOR WRITE-INS

Additional Write-ins for Assets Line 25

	Current Statement Date			4 December 31 Prior Year Net Admitted Assets
	1 Assets	2 Nonadmitted Assets	3 Net Admitted Assets (Cols. 1 - 2)	
2504. Unsecured loans	2,437,239	2,437,239		
2505. Miscellaneous assets	551,265	551,265		
2597. Summary of remaining write-ins for Line 25 from overflow page	2,988,504	2,988,504		

Additional Write-ins for Summary of Operations Line 27

	1 Current Year To Date	2 Prior Year To Date	3 Prior Year Ended December 31
2704. Miscellaneous expense	(1,896,173)	(323,693)	7,205,560
2797. Summary of remaining write-ins for Line 27 from overflow page	(1,896,173)	(323,693)	7,205,560

STATEMENT AS OF MARCH 31, 2026 OF THE Thrivent Financial for Lutherans

SCHEDULE A - VERIFICATION

Real Estate

	1 Year to Date	2 Prior Year Ended December 31
1. Book/adjusted carrying value, December 31 of prior year	18,878,358	18,324,218
2. Cost of acquired:		
2.1 Actual cost at time of acquisition		
2.2 Additional investment made after acquisition		3,281,953
3. Current year change in encumbrances		
4. Total gain (loss) on disposals		
5. Deduct amounts received on disposals		2,133,673
6. Total foreign exchange change in book/adjusted carrying value		
7. Deduct current year's other than temporary impairment recognized		
8. Deduct current year's depreciation	661,708	594,140
9. Book/adjusted carrying value at the end of current period (Lines 1+2+3+4-5+6-7-8)	18,216,650	18,878,358
10. Deduct total nonadmitted amounts		
11. Statement value at end of current period (Line 9 minus Line 10)	18,216,650	18,878,358

SCHEDULE B - VERIFICATION

Mortgage Loans

	1 Year to Date	2 Prior Year Ended December 31
1. Book value/recorded investment excluding accrued interest, December 31 of prior year	10,959,739,568	10,866,559,338
2. Cost of acquired:		
2.1 Actual cost at time of acquisition	353,821,063	1,071,633,440
2.2 Additional investment made after acquisition	14,573,804	33,330,286
3. Capitalized deferred interest and other		
4. Accrual of discount		
5. Unrealized valuation increase/(decrease)		
6. Total gain (loss) on disposals		
7. Deduct amounts received on disposals	224,675,136	1,011,783,496
8. Deduct amortization of premium and mortgage interest points and commitment fees		
9. Total foreign exchange change in book value/recorded investment excluding accrued interest		
10. Deduct current year's other than temporary impairment recognized		
11. Book value/recorded investment excluding accrued interest at end of current period (Lines 1+2+3+4+5+6-7-8+9-10)	11,103,459,300	10,959,739,568
12. Total valuation allowance		
13. Subtotal (Line 11 plus Line 12)	11,103,459,300	10,959,739,568
14. Deduct total nonadmitted amounts		
15. Statement value at end of current period (Line 13 minus Line 14)	11,103,459,300	10,959,739,568

SCHEDULE BA - VERIFICATION

Other Long-Term Invested Assets

	1 Year to Date	2 Prior Year Ended December 31
1. Book/adjusted carrying value, December 31 of prior year	10,466,455,657	11,551,900,308
2. Cost of acquired:		
2.1 Actual cost at time of acquisition	14,045,501	2,871,212,886
2.2 Additional investment made after acquisition	308,759,221	1,607,035,584
3. Capitalized deferred interest and other		
4. Accrual of discount	1,470,204	3,716
5. Unrealized valuation increase/(decrease)	58,457,355	194,216,832
6. Total gain (loss) on disposals	(1,010,707)	355,457,889
7. Deduct amounts received on disposals	307,634,693	6,117,984,966
8. Deduct amortization of premium, depreciation and proportional amortization	26,467	134,026
9. Total foreign exchange change in book/adjusted carrying value		4,747,435
10. Deduct current year's other than temporary impairment recognized		
11. Book/adjusted carrying value at end of current period (Lines 1+2+3+4+5+6-7-8+9-10)	10,540,516,071	10,466,455,657
12. Deduct total nonadmitted amounts	40,263,185	51,249,511
13. Statement value at end of current period (Line 11 minus Line 12)	10,500,252,886	10,415,206,146

SCHEDULE D - VERIFICATION

Bonds and Stocks

	1 Year to Date	2 Prior Year Ended December 31
1. Book/adjusted carrying value of bonds and stocks, December 31 of prior year	57,228,315,405	54,628,915,220
2. Cost of bonds and stocks acquired	3,535,934,953	13,308,961,630
3. Accrual of discount	12,054,049	50,793,955
4. Unrealized valuation increase/(decrease)	42,373,558	85,173,060
5. Total gain (loss) on disposals	72,869,300	86,344,859
6. Deduct consideration for bonds and stocks disposed of	2,606,700,976	10,907,449,912
7. Deduct amortization of premium	19,635,732	103,622,266
8. Total foreign exchange change in book/adjusted carrying value	(14,289,452)	70,453,882
9. Deduct current year's other than temporary impairment recognized	(393,572)	14,552,710
10. Total investment income recognized as a result of prepayment penalties and/or acceleration fees	2,156,148	23,297,687
11. Book/adjusted carrying value at end of current period (Lines 1+2+3+4+5-6-7+8-9+10)	58,253,470,825	57,228,315,405
12. Deduct total nonadmitted amounts		
13. Statement value at end of current period (Line 11 minus Line 12)	58,253,470,825	57,228,315,405

STATEMENT AS OF MARCH 31, 2026 OF THE Thrivent Financial for Lutherans

SCHEDULE D - PART 1B

Showing the Acquisitions, Dispositions and Non-Trading Activity
During the Current Quarter for all Bonds and Preferred Stock by NAIC Designation

NAIC Designation	1 Book/Adjusted Carrying Value Beginning of Current Quarter	2 Acquisitions During Current Quarter	3 Dispositions During Current Quarter	4 Non-Trading Activity During Current Quarter	5 Book/Adjusted Carrying Value End of First Quarter	6 Book/Adjusted Carrying Value End of Second Quarter	7 Book/Adjusted Carrying Value End of Third Quarter	8 Book/Adjusted Carrying Value December 31 Prior Year
ISSUER CREDIT OBLIGATIONS (ICO)								
1. NAIC 1 (a)	21,319,122,569	697,068,183	4,510,066,227	3,807,166,980	21,313,291,505			21,319,122,569
2. NAIC 2 (a)	18,719,073,855	174,654,830	726,144,396	702,413,524	18,869,997,813			18,719,073,855
3. NAIC 3 (a)	3,442,565,076	217,001,932	322,402,258	208,244,067	3,545,408,817			3,442,565,076
4. NAIC 4 (a)	1,812,958,833	109,560,598	243,420,266	162,777,276	1,841,876,441			1,812,958,833
5. NAIC 5 (a)	55,351,659	2,616	14,439,214	(4,365,940)	36,549,121			55,351,659
6. NAIC 6 (a)	172,694	615,389	463,295	(200,043)	124,745			172,694
7. Total ICO	45,349,244,686	1,198,903,548	5,816,935,656	4,876,035,864	45,607,248,442			45,349,244,686
ASSET-BACKED SECURITIES (ABS)								
8. NAIC 1	10,522,815,027	93,337,163	591,504,100	996,270,888	11,020,918,978			10,522,815,027
9. NAIC 2	430,605,676	18,379,952	26,130,630	29,533,706	452,388,704			430,605,676
10. NAIC 3	224,864,658	8,320,781	536,993	21,846,046	254,494,492			224,864,658
11. NAIC 4	71,305,869			24,506,101	95,811,970			71,305,869
12. NAIC 5	246,148		2,353,201	2,344,148	237,095			246,148
13. NAIC 6	2,389,618	329,205		(2,673,304)	45,519			2,389,618
14. Total ABS	11,252,226,996	120,367,101	620,524,924	1,071,827,585	11,823,896,758			11,252,226,996
PREFERRED STOCK								
15. NAIC 1	303,000,000			5,000,000	308,000,000			303,000,000
16. NAIC 2	178,181,798	13,089,770	13,299,998	1,671,163	179,642,733			178,181,798
17. NAIC 3	34,417,775	2,937,117	1,761,727	18,468,613	54,061,778			34,417,775
18. NAIC 4								
19. NAIC 5								
20. NAIC 6	952				952			952
21. Total Preferred Stock	515,600,525	16,026,887	15,061,725	25,139,776	541,705,463			515,600,525
22. Total ICO, ABS & Preferred Stock	57,117,072,207	1,335,297,536	6,452,522,305	5,973,003,225	57,972,850,663			57,117,072,207

(a) Book/Adjusted Carrying Value column for the end of the current reporting period includes the following amount of short-term and cash equivalent bonds by NAIC designation:

NAIC 1 \$ 1,474,274,403 ; NAIC 2 \$ 31,593,548 ; NAIC 3 \$ 5,345,057 ; NAIC 4 \$; NAIC 5 \$; NAIC 6 \$ 120,655

S102

SCHEDULE DA - PART 1

Short-Term Investments

	1	2	3	4	5
	Book/Adjusted Carrying Value	Par Value	Actual Cost	Interest Collected Year-to-Date	Paid for Accrued Interest Year-to-Date
7709999999 Totals	385,763,131	xxx	384,775,109	1,703,483	80,367

SCHEDULE DA - VERIFICATION

Short-Term Investments

	1	2
	Year To Date	Prior Year Ended December 31
1. Book/adjusted carrying value, December 31 of prior year	527,424,185	187,698,668
2. Cost of short-term investments acquired	178,876,600	1,555,791,880
3. Accrual of discount	2,416,263	14,708,106
4. Unrealized valuation increase/(decrease)		
5. Total gain (loss) on disposals	5,245,540	1,602,685
6. Deduct consideration received on disposals	326,046,317	1,225,749,344
7. Deduct amortization of premium	1,584,592	5,430,116
8. Total foreign exchange change in book/adjusted carrying value		
9. Deduct current year's other than temporary impairment recognized	568,548	1,197,694
10. Book/adjusted carrying value at end of current period (Lines 1+2+3+4+5-6-7+8-9)	385,763,131	527,424,185
11. Deduct total nonadmitted amounts		
12. Statement value at end of current period (Line 10 minus Line 11)	385,763,131	527,424,185

STATEMENT AS OF MARCH 31, 2026 OF THE Thrivent Financial for Lutherans

SCHEDULE DB - PART A - VERIFICATION

Options, Caps, Floors, Collars, Swaps and Forwards

1. Book/adjusted carrying value, December 31, prior year (Line 10, prior year)	452,809,160
2. Cost paid/(consideration received) on additions	1,343,306,484
3. Unrealized valuation increase/(decrease)	(25,962,943)
4. SSAP No. 108 adjustments	
5. Total gain (loss) on termination recognized	11,324,685
6. Considerations received/(paid) on terminations	1,350,057,335
7. Amortization	
8. Adjustment to the book/adjusted carrying value of hedged item	
9. Total foreign exchange change in book/adjusted carrying value	19,887,524
10. Book/adjusted carrying value at end of current period (Lines 1+2+3+4+5-6+7+8+9)	451,307,575
11. Deduct nonadmitted assets	
12. Statement value at end of current period (Line 10 minus Line 11)	451,307,575

SCHEDULE DB - PART B - VERIFICATION

Futures Contracts

1. Book/adjusted carrying value, December 31 of prior year (Line 6, prior year)	7,105
2. Cumulative cash change (Section 1, Broker Name/Net Cash Deposits Footnote - Cumulative Cash Change column)	
3.1 Add:	
Change in variation margin on open contracts - highly effective hedges	
3.11 Section 1, Column 15, current year to date minus	
3.12 Section 1, Column 15, prior year	
Change in variation margin on open contracts - all other	
3.13 Section 1, Column 18, current year to date minus	15,449,552
3.14 Section 1, Column 18, prior year	4,450,673
	10,998,879
	10,998,879
3.2 Add:	
Change in adjustment to basis of hedged item	
3.21 Section 1, Column 17, current year to date minus	
3.22 Section 1, Column 17, prior year	
Change in amount recognized	
3.23 Section 1, Column 19, current year to date minus	15,438,245
3.24 Section 1, Column 19, prior year plus	4,443,566
3.25 SSAP No. 108 adjustments	10,994,679
	10,994,679
3.3 Subtotal (Line 3.1 minus Line 3.2)	4,200
4.1 Cumulative variation margin on terminated contracts during the year	19,071,875
4.2 Less:	
4.21 Amount used to adjust basis of hedged item	
4.22 Amount recognized	19,064,770
4.23 SSAP No. 108 adjustments	19,064,770
4.3 Subtotal (Line 4.1 minus Line 4.2)	7,105
5. Dispositions gains (losses) on contracts terminated in prior year:	
5.1 Total gain (loss) recognized for terminations in prior year	
5.2 Total gain (loss) adjusted into the hedged item(s) for terminations in prior year	
6. Book/adjusted carrying value at end of current period (Lines 1+2+3.3-4.3-5.1-5.2)	4,200
7. Deduct total nonadmitted amounts	
8. Statement value at end of current period (Line 6 minus Line 7)	4,200

Schedule DB - Part C - Section 1 - Replication (Synthetic Asset) Transactions (RSATs) Open

N O N E

Schedule DB-Part C-Section 2-Reconciliation of Replication (Synthetic Asset) Transactions Open

N O N E

STATEMENT AS OF MARCH 31, 2026 OF THE Thrivent Financial for Lutherans

SCHEDULE DB - VERIFICATION

Verification of Book/Adjusted Carrying Value, Fair Value and Potential Exposure of all Open Derivative Contracts

	Book/Adjusted Carrying Value Check
1. Part A, Section 1, Column 14.....	611,746,221
2. Part B, Section 1, Column 15 plus Part B, Section 1 Footnote - Total Ending Cash Balance.....
3. Total (Line 1 plus Line 2)	611,746,221
4. Part D, Section 1, Column 6	673,724,828
5. Part D, Section 1, Column 7	(61,967,338)
6. Total (Line 3 minus Line 4 minus Line 5)	(11,269)
	Fair Value Check
7. Part A, Section 1, Column 16	611,342,349
8. Part B, Section 1, Column 13	(30,826,545)
9. Total (Line 7 plus Line 8)	580,515,804
10. Part D, Section 1, Column 9	673,633,919
11. Part D, Section 1, Column 10	(62,372,758)
12. Total (Line 9 minus Line 10 minus Line 11)	(30,745,357)
	Potential Exposure Check
13. Part A, Section 1, Column 21	11,654,780
14. Part B, Section 1, Column 20
15. Part D, Section 1, Column 12	11,654,780
16. Total (Line 13 plus Line 14 minus Line 15)

STATEMENT AS OF MARCH 31, 2026 OF THE Thrivent Financial for Lutherans

SCHEDULE E - PART 2 - VERIFICATION

(Cash Equivalents)

	1	2
	Year To Date	Prior Year Ended December 31
1. Book/adjusted carrying value, December 31 of prior year	1,387,941,360	1,311,276,939
2. Cost of cash equivalents acquired	12,896,212,484	55,931,162,507
3. Accrual of discount	11,601,397	56,036,515
4. Unrealized valuation increase/(decrease)		
5. Total gain (loss) on disposals	351,177	17,237
6. Deduct consideration received on disposals	12,773,629,062	44,190,402,969
7. Deduct amortization of premium	277,032	11,720,148,869
8. Total foreign exchange change in book/adjusted carrying value		
9. Deduct current year's other than temporary impairment recognized		
10. Book/adjusted carrying value at end of current period (Lines 1+2+3+4+5-6-7+8-9)	1,522,200,324	1,387,941,360
11. Deduct total nonadmitted amounts		
12. Statement value at end of current period (Line 10 minus Line 11)	1,522,200,324	1,387,941,360